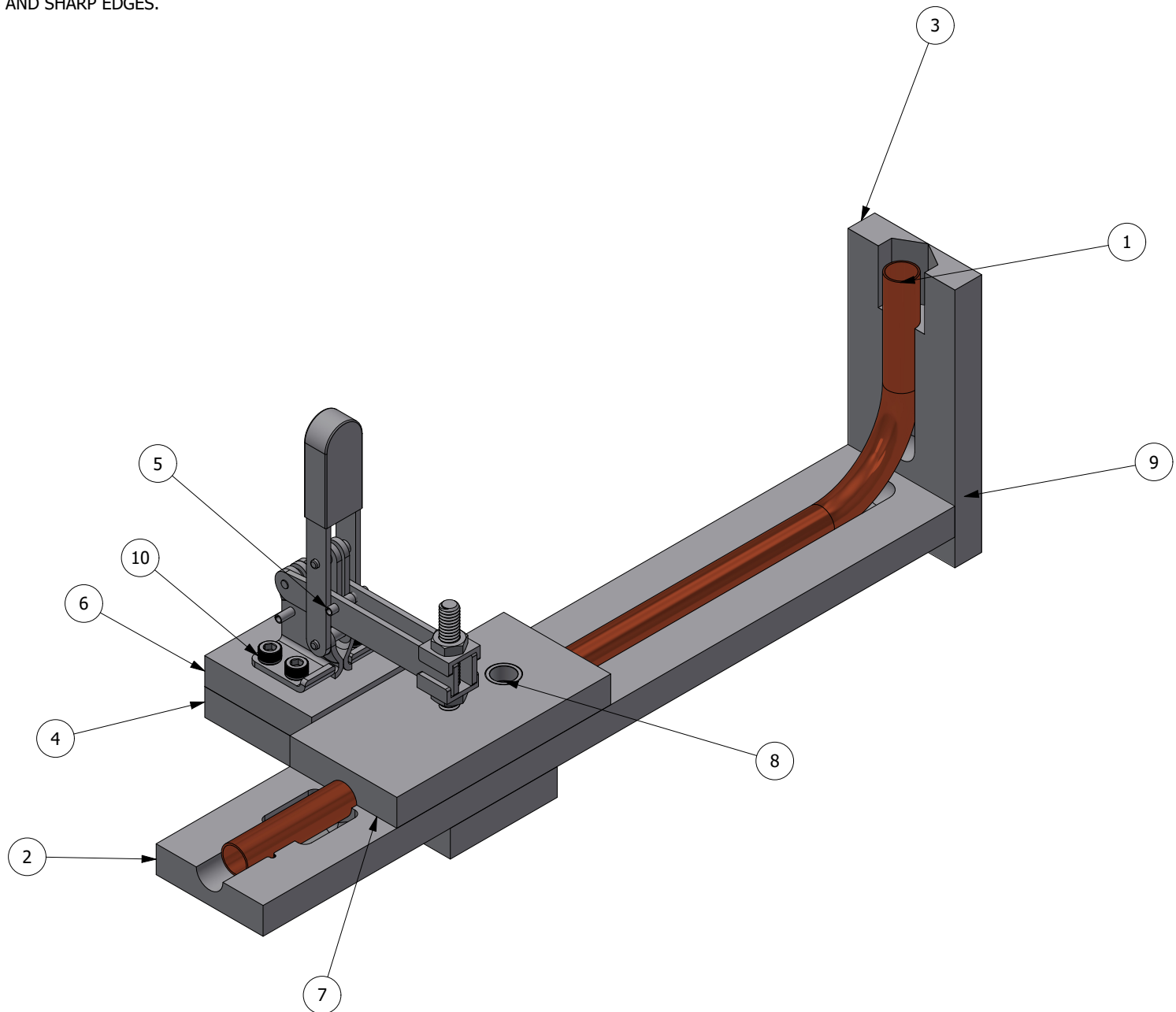


NOTES:

1. INTERPRET THIS DRAWING IN ACCORDANCE WITH ASME Y14.100.
2. REMOVE ALL BURRS AND SHARP EDGES.

REVISIONS				
REV	ZONE	DESCRIPTION	DATE	APPROVED
A				GSC



ITEM	PART NUMBER	QTY	NOMENCLATURE OR DESCRIPTION	SPECIFICATION
10	90128A947	4	Zinc-Plated Alloy Steel Socket Head Screw	
9	91274A179	6	Zinc-Aluminum-Coated Alloy Steel Socket Head Screw	
8	8491A725	1	Press-Fit Drill Bushing	
7	52308-2-05	1	top mold	
6	52308-2-01	1	clamp riser	
5	5126A71	1	Hold-Down Toggle Clamp	
4	52308-2-03	1	clamp connector	
3	52308-2-04	1	riser	
2	52308-2-02	1	base mold	
1	10-52308	1	copper tube, .500 OD, post end-forming	
	placeholder pipe			

PARTS LIST

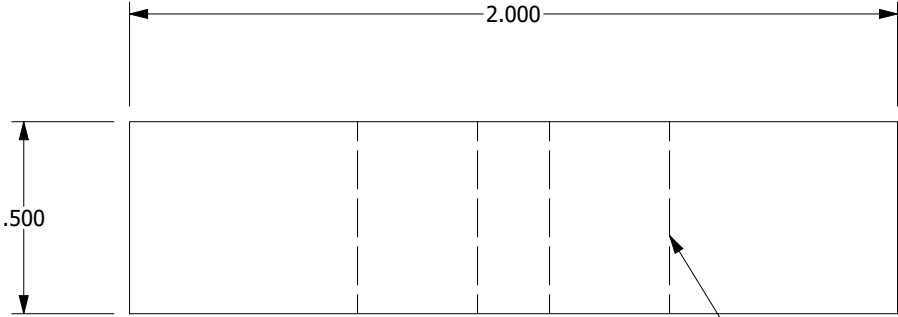
<p>QUALITY SYMBOLS</p> <p> DENOTES CRITICAL INSPECTION</p>	UNLESS OTHERWISE SPECIFIED: DIMENSIONS ARE IN INCHES		CONTRACT NO.		
	TOLERANCES:		DATE		
	ANGLES	X ± 1'	B. VILLANUEVA	10/28/2023	
	1 PLACE DIM.	X ± .1	CHECKED	DATE	
2 PLACE DIM.	X ± .01	MECHANICAL	DATE		
3 PLACE DIM.	X ± .005	B. VILLANUEVA	10/28/2023		
		ELECTRICAL	DATE		
		OPERATIONS	DATE		
		B. BLACH	DATE		
		APPROVED	DATE		
		G. COLE	DATE		

NEXT ASSY	USED ON	SIZE	CAGE CODE	DRAWING NO.
APPLICATION		B	0A0B7	10-52308 drill fixture
		SCALE: NONE	UNIT WT.	REV SHEET 1 OF 6

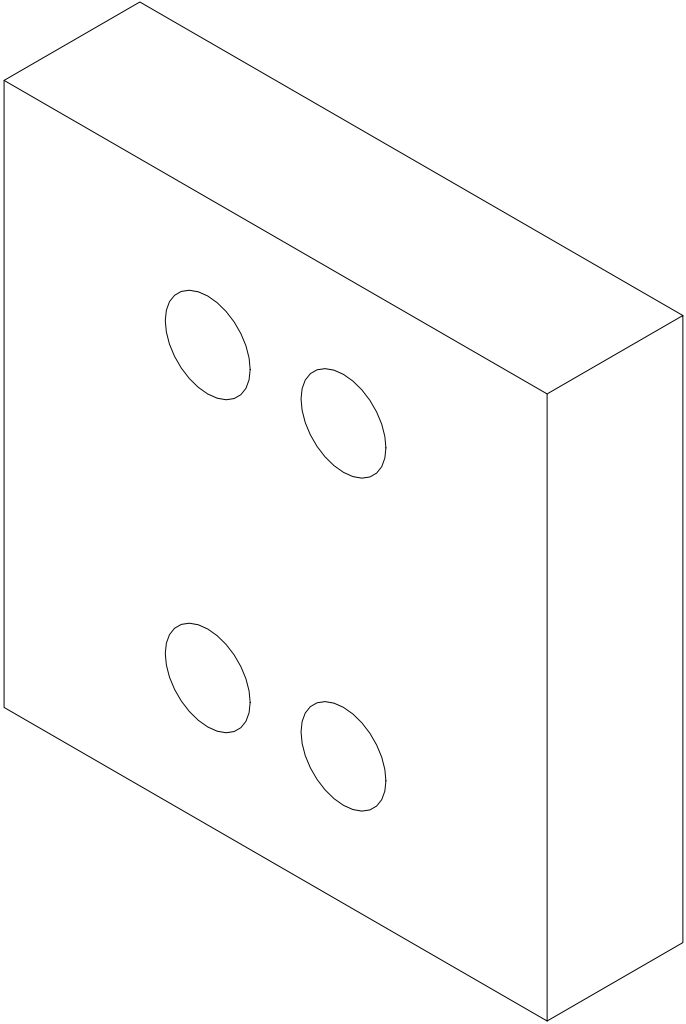
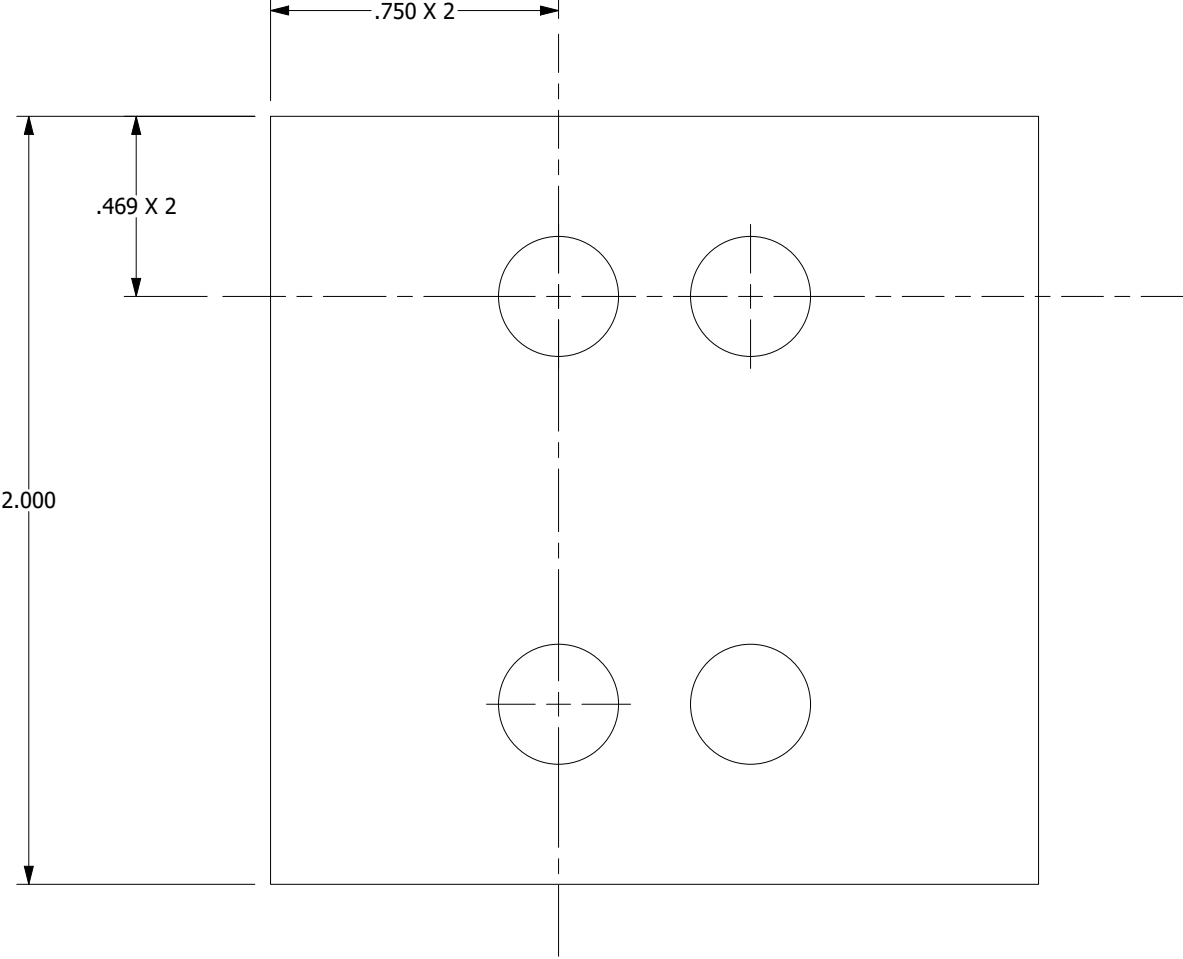
PROPRIETARY NOTE: THIS DOCUMENT CONTAINS INFORMATION WHICH IS CONFIDENTIAL AND PROPRIETARY TO MAINSTREAM ENGINEERING CORPORATION AND SHALL NOT BE USED, DUPLICATED OR DISCLOSED TO ANYONE, IN WHOLE OR IN PART, OR USED FOR ANY PURPOSE OTHER THAN WHICH IT WAS OBTAINED WITHOUT FIRST OBTAINING THE EXPRESSED WRITTEN CONSENT FROM MAINSTREAM ENGINEERING CORPORATION.

DRAWING NO. 10-52308 drill fixture

MATERIAL: ALUMINUM ALLOY, 6061, FLAT BAR, 2" X .5"



Ø.313 THRU



PROPRIETARY NOTE: THIS DOCUMENT CONTAINS INFORMATION WHICH IS CONFIDENTIAL AND PROPRIETARY TO MAINSTREAM ENGINEERING CORPORATION AND SHALL NOT BE USED, DUPLICATED OR DISCLOSED TO ANYONE, IN WHOLE OR IN PART, OR USED FOR ANY PURPOSE OTHER THAN WHICH IT WAS OBTAINED WITHOUT FIRST OBTAINING THE EXPRESSED WRITTEN CONSENT FROM MAINSTREAM ENGINEERING CORPORATION.

ITEM NO. 6
PART NO. 52308-1-02

SIZE	CAGE CODE	DRAWING NO.
B	0A0B7	10-52308 drill fixture
SCALE: NONE	REV	SHEET 2 OF 6

DRAWING NO. 10-52308 drill fixture

MATERIAL: ALUMINUM ALLOY, 6061, FLAT BAR, 2" X .5"

1/4-28 UNF - 2B ∇ .500 2X

\varnothing .250 THRU
 \sqsubset \varnothing .375 ∇ .250 4X

\varnothing .500
 R.250

12.469

5.002

4.002

2.406

2.281

1.469

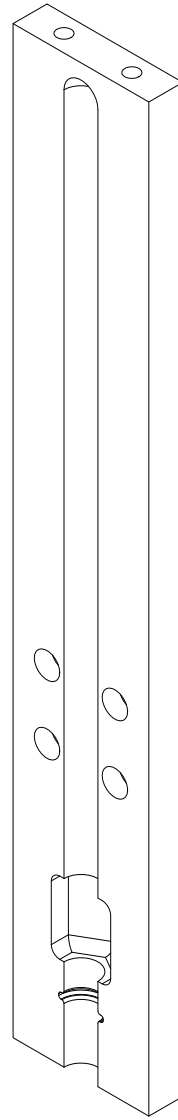
1.344

.933

.845

.327

.250



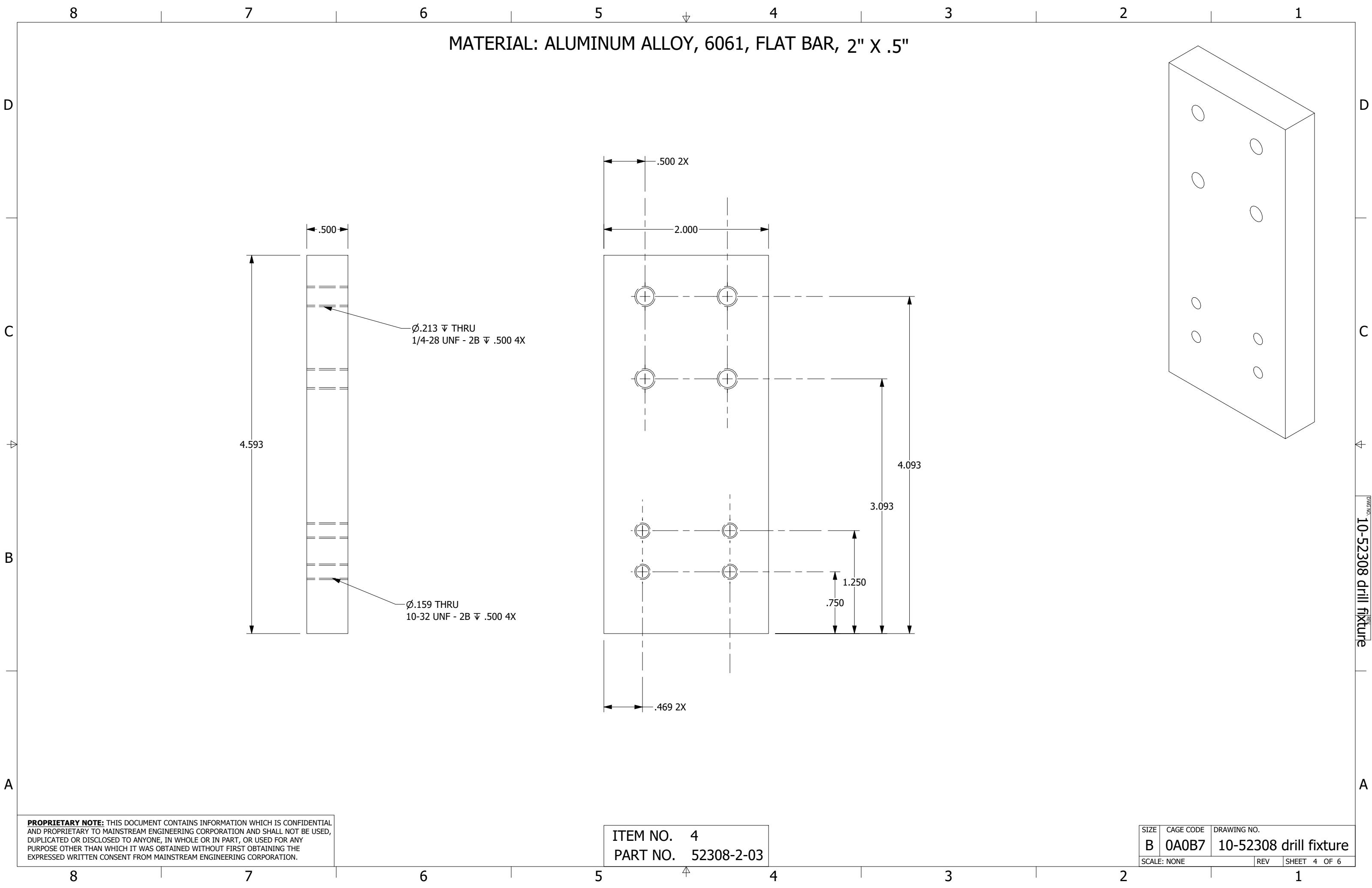
PROPRIETARY NOTE: THIS DOCUMENT CONTAINS INFORMATION WHICH IS CONFIDENTIAL AND PROPRIETARY TO MAINSTREAM ENGINEERING CORPORATION AND SHALL NOT BE USED, DUPLICATED OR DISCLOSED TO ANYONE, IN WHOLE OR IN PART, OR USED FOR ANY PURPOSE OTHER THAN WHICH IT WAS OBTAINED WITHOUT FIRST OBTAINING THE EXPRESSED WRITTEN CONSENT FROM MAINSTREAM ENGINEERING CORPORATION.

ITEM NO. 2
 PART NO. 52308-2-02

SIZE	CAGE CODE	DRAWING NO.
B	0A0B7	10-52308 drill fixture
SCALE: NONE	REV	SHEET 3 OF 6

DRAWING NO. 10-52308 drill fixture

MATERIAL: ALUMINUM ALLOY, 6061, FLAT BAR, 2" X .5"



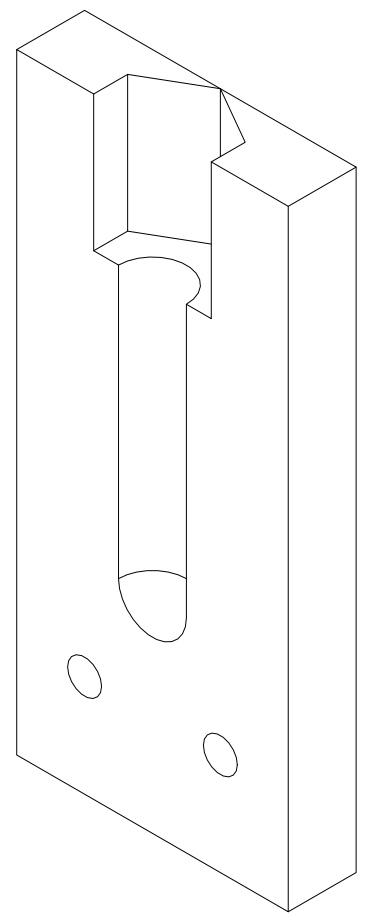
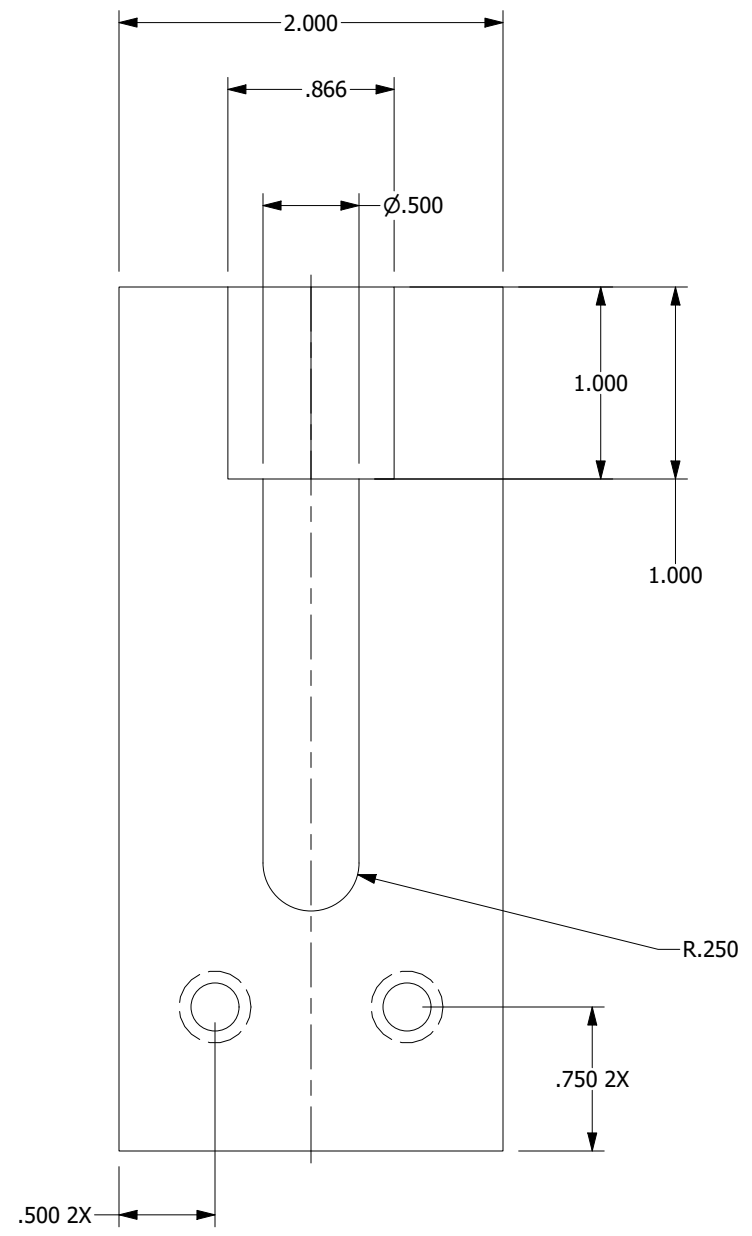
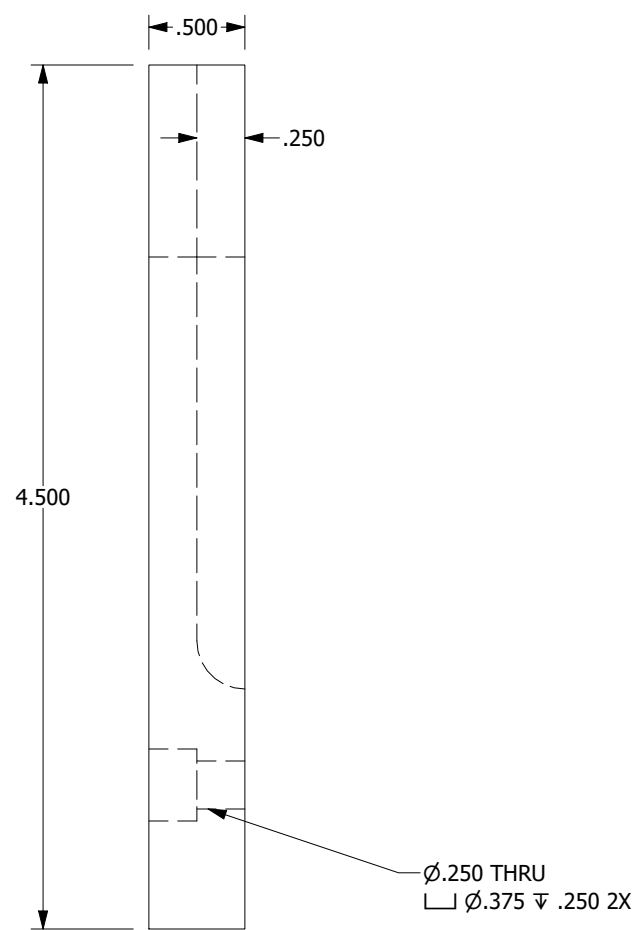
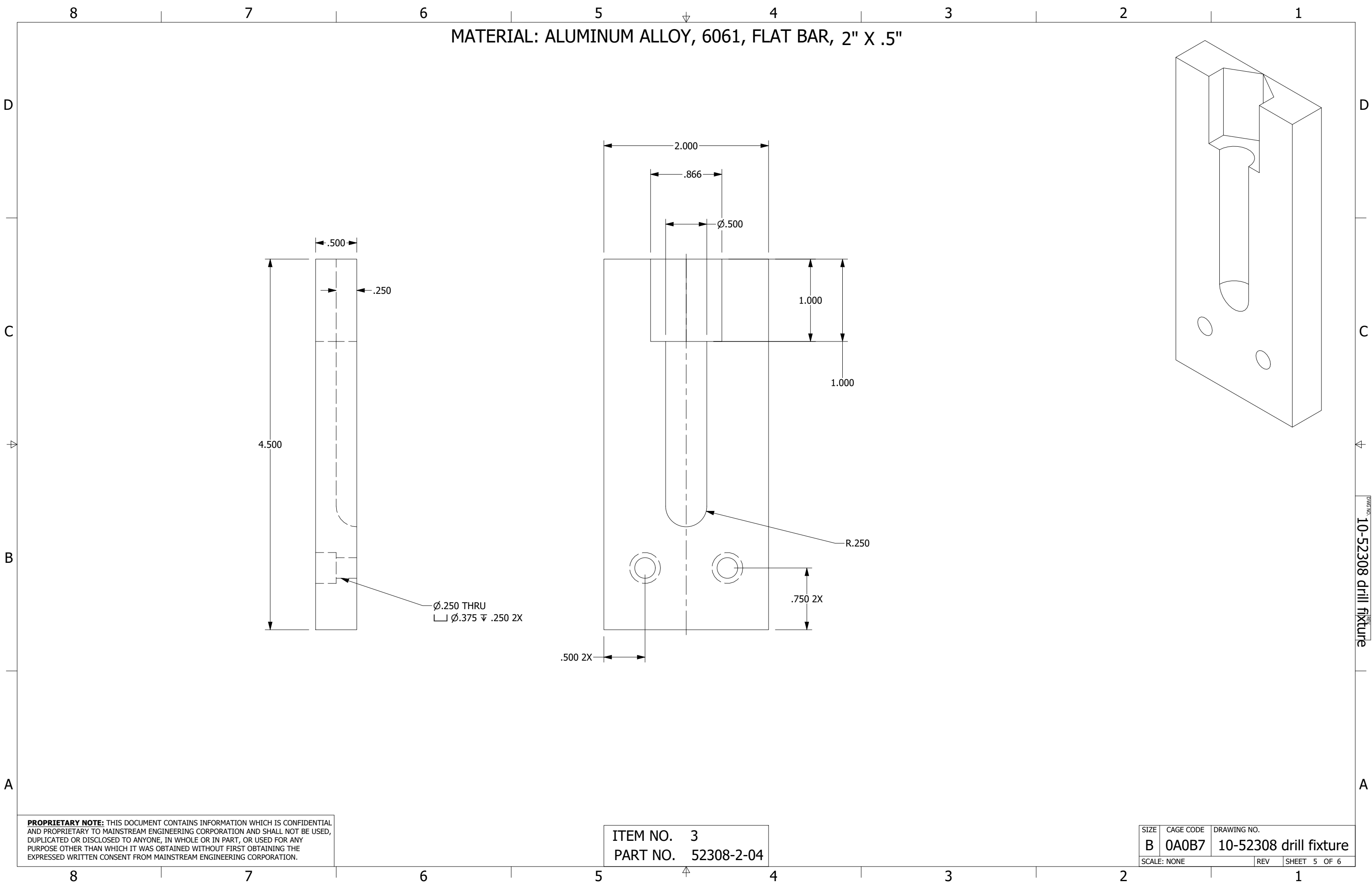
PROPRIETARY NOTE: THIS DOCUMENT CONTAINS INFORMATION WHICH IS CONFIDENTIAL AND PROPRIETARY TO MAINSTREAM ENGINEERING CORPORATION AND SHALL NOT BE USED, DUPLICATED OR DISCLOSED TO ANYONE, IN WHOLE OR IN PART, OR USED FOR ANY PURPOSE OTHER THAN WHICH IT WAS OBTAINED WITHOUT FIRST OBTAINING THE EXPRESSED WRITTEN CONSENT FROM MAINSTREAM ENGINEERING CORPORATION.

ITEM NO. 4
PART NO. 52308-2-03

SIZE	CAGE CODE	DRAWING NO.
B	0A0B7	10-52308 drill fixture
SCALE: NONE		REV SHEET 4 OF 6

DRAWING NO. 10-52308 drill fixture

MATERIAL: ALUMINUM ALLOY, 6061, FLAT BAR, 2" X .5"



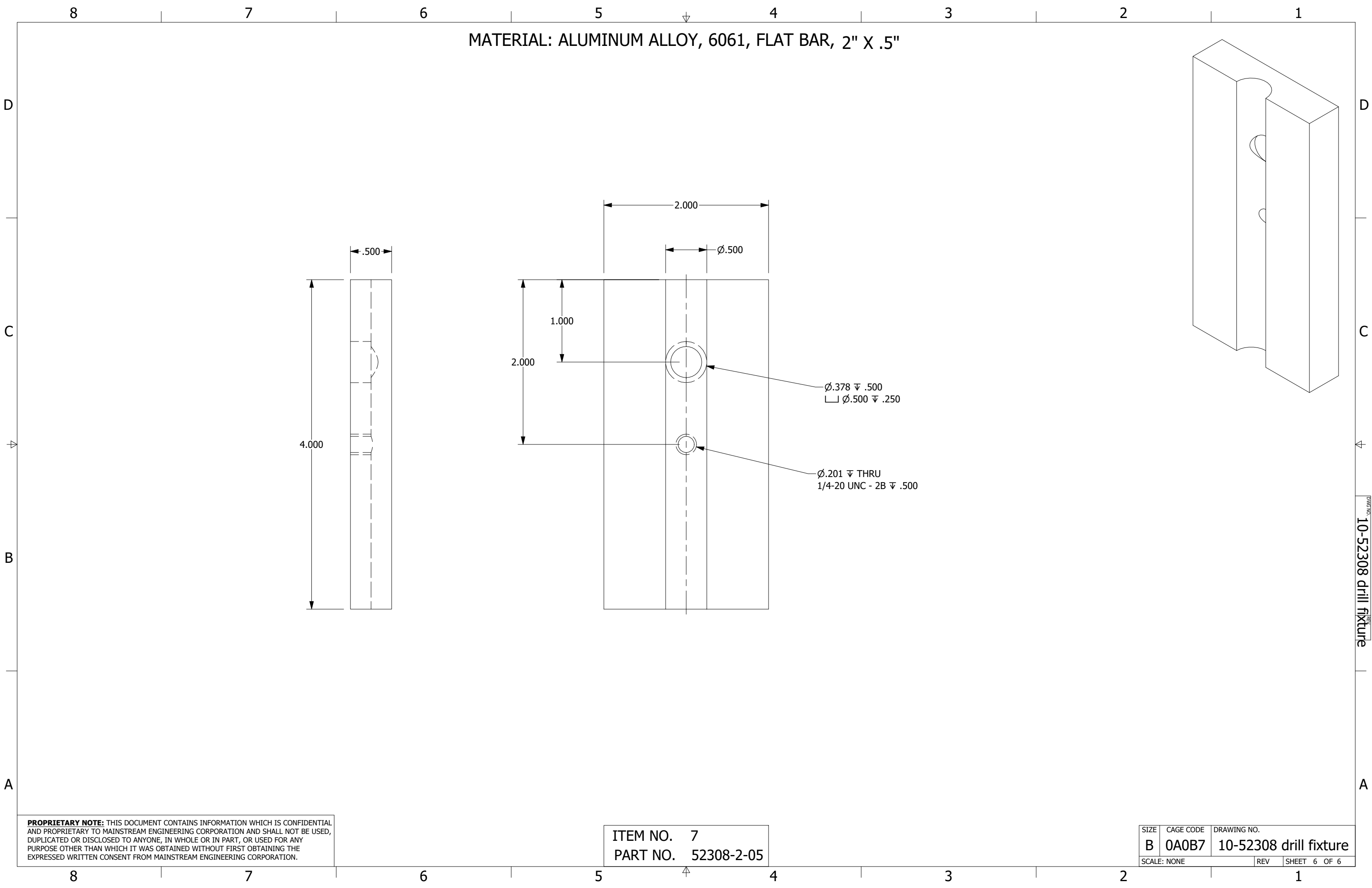
PROPRIETARY NOTE: THIS DOCUMENT CONTAINS INFORMATION WHICH IS CONFIDENTIAL AND PROPRIETARY TO MAINSTREAM ENGINEERING CORPORATION AND SHALL NOT BE USED, DUPLICATED OR DISCLOSED TO ANYONE, IN WHOLE OR IN PART, OR USED FOR ANY PURPOSE OTHER THAN WHICH IT WAS OBTAINED WITHOUT FIRST OBTAINING THE EXPRESSED WRITTEN CONSENT FROM MAINSTREAM ENGINEERING CORPORATION.

ITEM NO. 3
PART NO. 52308-2-04

SIZE	CAGE CODE	DRAWING NO.
B	0A0B7	10-52308 drill fixture
SCALE: NONE	REV	SHEET 5 OF 6

DRAWING NO. 10-52308 drill fixture

MATERIAL: ALUMINUM ALLOY, 6061, FLAT BAR, 2" X .5"



PROPRIETARY NOTE: THIS DOCUMENT CONTAINS INFORMATION WHICH IS CONFIDENTIAL AND PROPRIETARY TO MAINSTREAM ENGINEERING CORPORATION AND SHALL NOT BE USED, DUPLICATED OR DISCLOSED TO ANYONE, IN WHOLE OR IN PART, OR USED FOR ANY PURPOSE OTHER THAN WHICH IT WAS OBTAINED WITHOUT FIRST OBTAINING THE EXPRESSED WRITTEN CONSENT FROM MAINSTREAM ENGINEERING CORPORATION.

ITEM NO. 7
PART NO. 52308-2-05

SIZE	CAGE CODE	DRAWING NO.
B	0A0B7	10-52308 drill fixture
SCALE: NONE		REV SHEET 6 OF 6

DRAWING NO. 10-52308 drill fixture