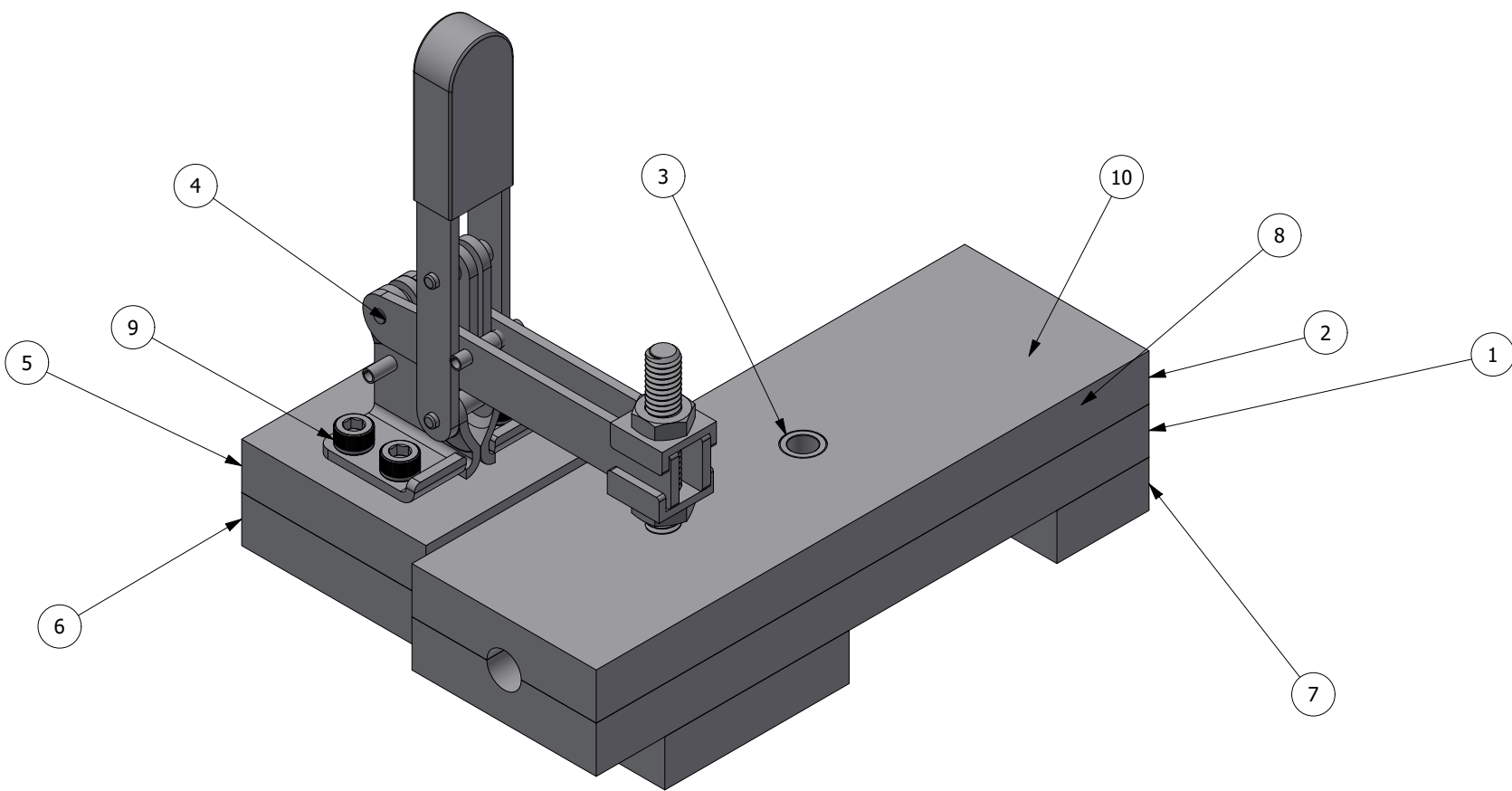


NOTES:

1. INTERPRET THIS DRAWING IN ACCORDANCE WITH ASME Y14.100.
2. REMOVE ALL BURRS AND SHARP EDGES.

REVISIONS				
REV	ZONE	DESCRIPTION	DATE	APPROVED
A				GSC



ITEM	PART NUMBER	QTY	NOMENCLATURE OR DESCRIPTION	SPECIFICATION
10	10-52304 placeholder pipe	1	Copper tube, .375 OD, length including fitting, post end-forming	
9	90128A947	4	Zinc-Plated Alloy Steel Socket Head Screw	
8	90128A363	6	Zinc-Plated Alloy Steel Socket Head Screw	
7	52304-2-04	1	leveling plate	
6	52304-2-02	1	clamp connector plate	
5	52304-2-01	1	clamp riser	
4	5126A71	1	Hold Down Toggle Clamp	
3	8491A099	1	Press-Fit Drill Bushing	
2	52304-2-05	1	Top mold	
1	52304-2-03	1	Base mold	

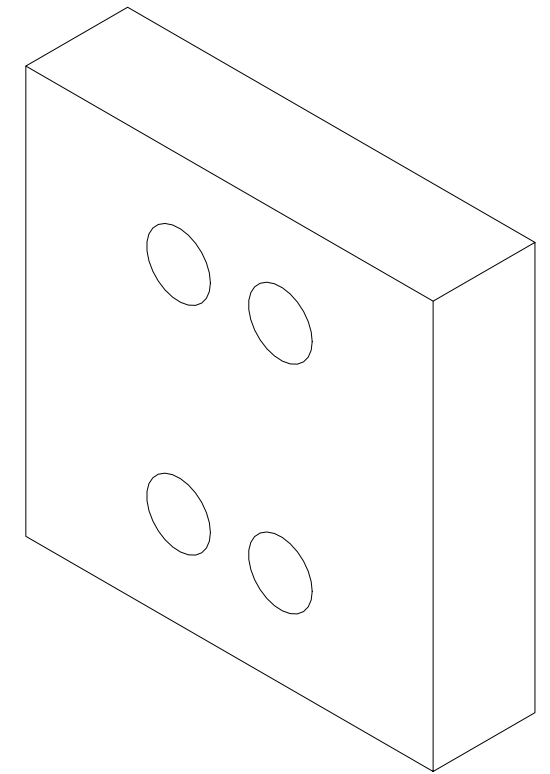
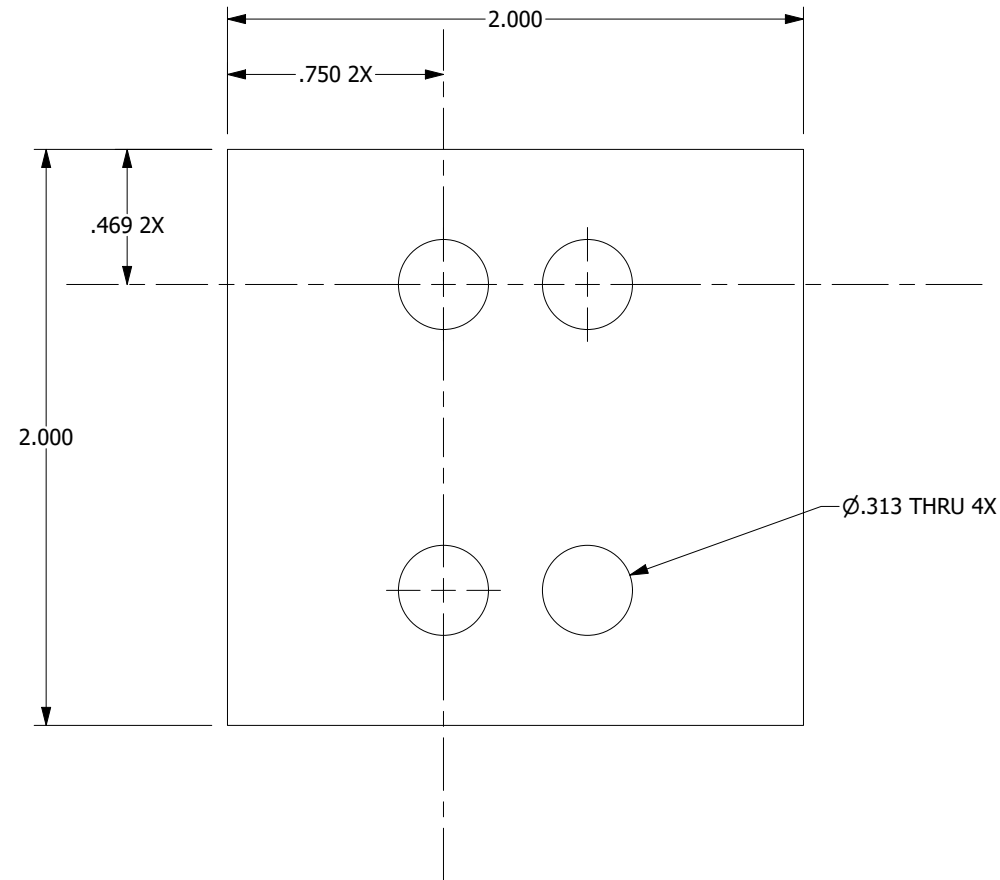
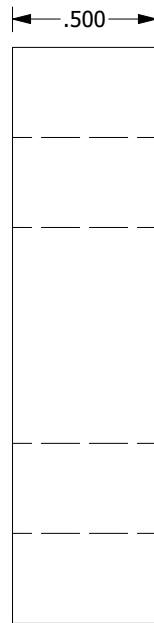
PARTS LIST

<p>QUALITY SYMBOLS</p> <p>DENOTES CRITICAL INSPECTION</p>	<p>UNLESS OTHERWISE SPECIFIED: DIMENSIONS ARE IN INCHES</p> <p>TOLERANCES:</p> <p>ANGLES X ± 1°</p> <p>1 PLACE DIM. X ± .1</p> <p>2 PLACE DIM. X ± .01</p> <p>3 PLACE DIM. X ± .005</p>	<p>CONTRACT NO.</p>		
		<p>DATE</p> <p>B. VILLANUEVA 10/29/2023</p> <p>CHECKED DATE</p>		
<p>THIRD ANGLE PROJECTION</p>		<p>MECHANICAL DATE</p> <p>B. VILLANUEVA 10/29/2023</p> <p>ELECTRICAL DATE</p>		<p>SIZE CAGE CODE DRAWING NO.</p> <p>B 0A0B7 10-52304 drill fixture</p>
<p>NEXT ASSY USED ON APPLICATION</p>		<p>OPERATIONS DATE</p> <p>B. BLACH</p> <p>APPROVED DATE</p> <p>G. COLE</p>		

PROPRIETARY NOTE: THIS DOCUMENT CONTAINS INFORMATION WHICH IS CONFIDENTIAL AND PROPRIETARY TO MAINSTREAM ENGINEERING CORPORATION AND SHALL NOT BE USED, DUPLICATED OR DISCLOSED TO ANYONE, IN WHOLE OR IN PART, OR USED FOR ANY PURPOSE OTHER THAN WHICH IT WAS OBTAINED WITHOUT FIRST OBTAINING THE EXPRESSED WRITTEN CONSENT FROM MAINSTREAM ENGINEERING CORPORATION.

DRAWING NO. 10-52304 drill fixture

MATERIAL: ALUMINUM ALLOY, 6061, FLAT BAR, 2" x .5"



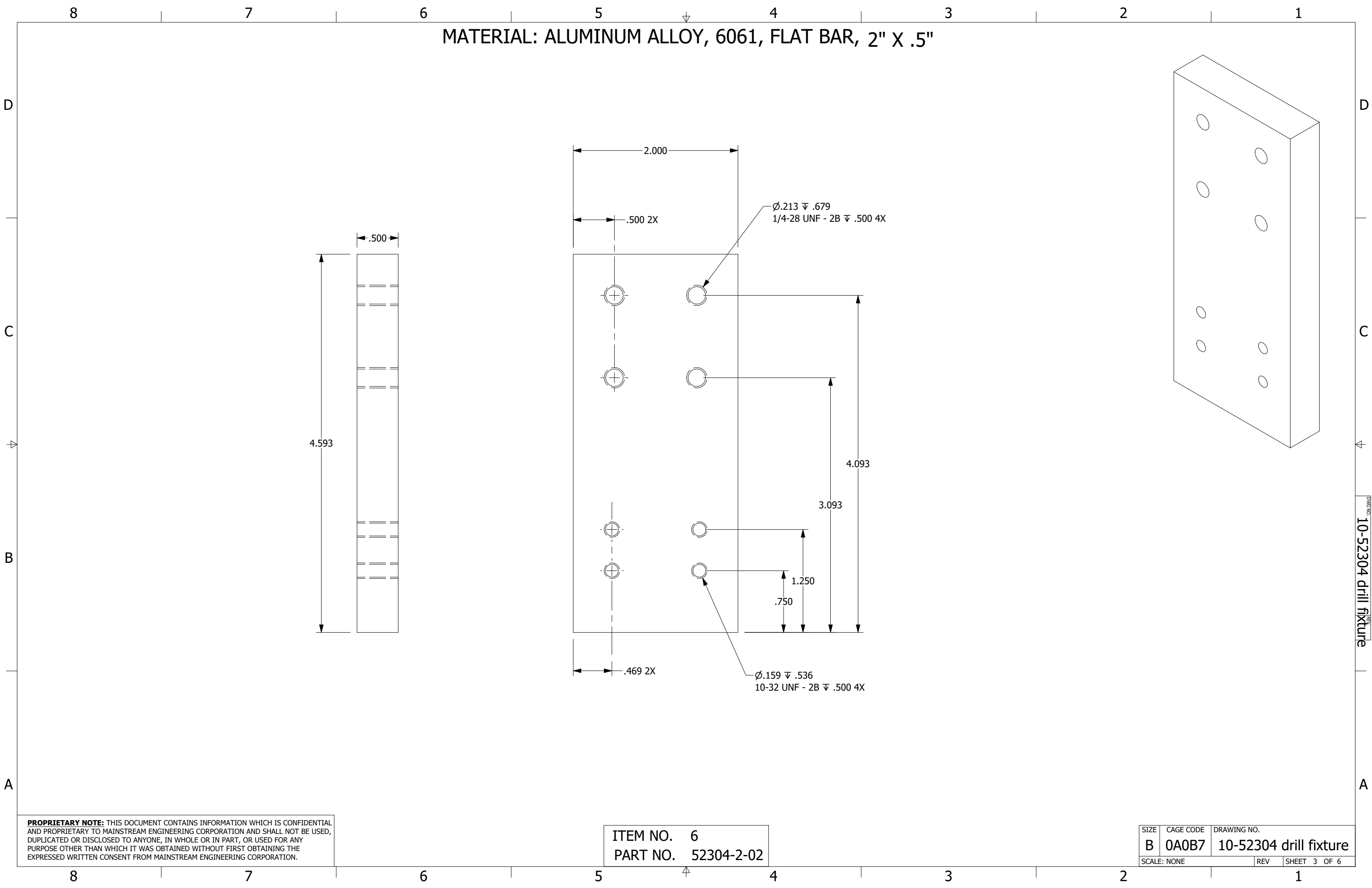
PROPRIETARY NOTE: THIS DOCUMENT CONTAINS INFORMATION WHICH IS CONFIDENTIAL AND PROPRIETARY TO MAINSTREAM ENGINEERING CORPORATION AND SHALL NOT BE USED, DUPLICATED OR DISCLOSED TO ANYONE, IN WHOLE OR IN PART, OR USED FOR ANY PURPOSE OTHER THAN WHICH IT WAS OBTAINED WITHOUT FIRST OBTAINING THE EXPRESSED WRITTEN CONSENT FROM MAINSTREAM ENGINEERING CORPORATION.

ITEM NO. 5
PART NO. 52304-2-01

SIZE	CAGE CODE	DRAWING NO.
B	0A0B7	10-52304 drill fixture
SCALE: NONE		REV SHEET 2 OF 6

DRAWING NO. 10-52304 drill fixture

MATERIAL: ALUMINUM ALLOY, 6061, FLAT BAR, 2" X .5"



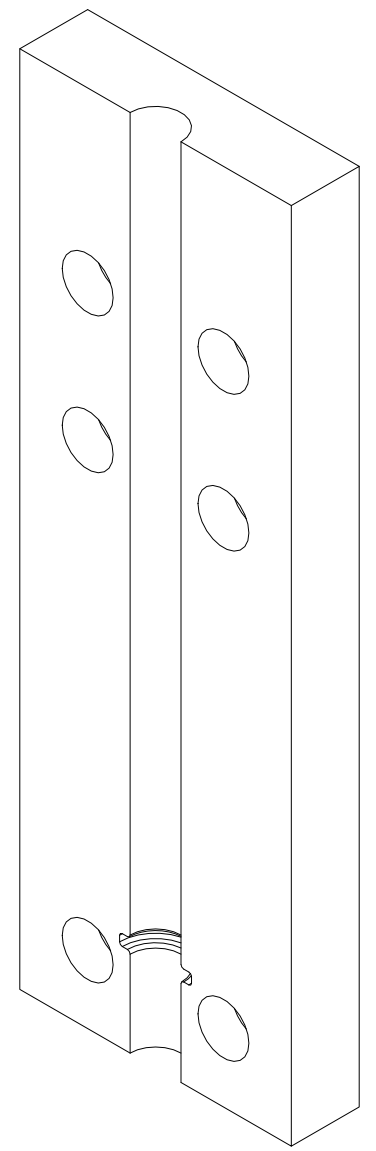
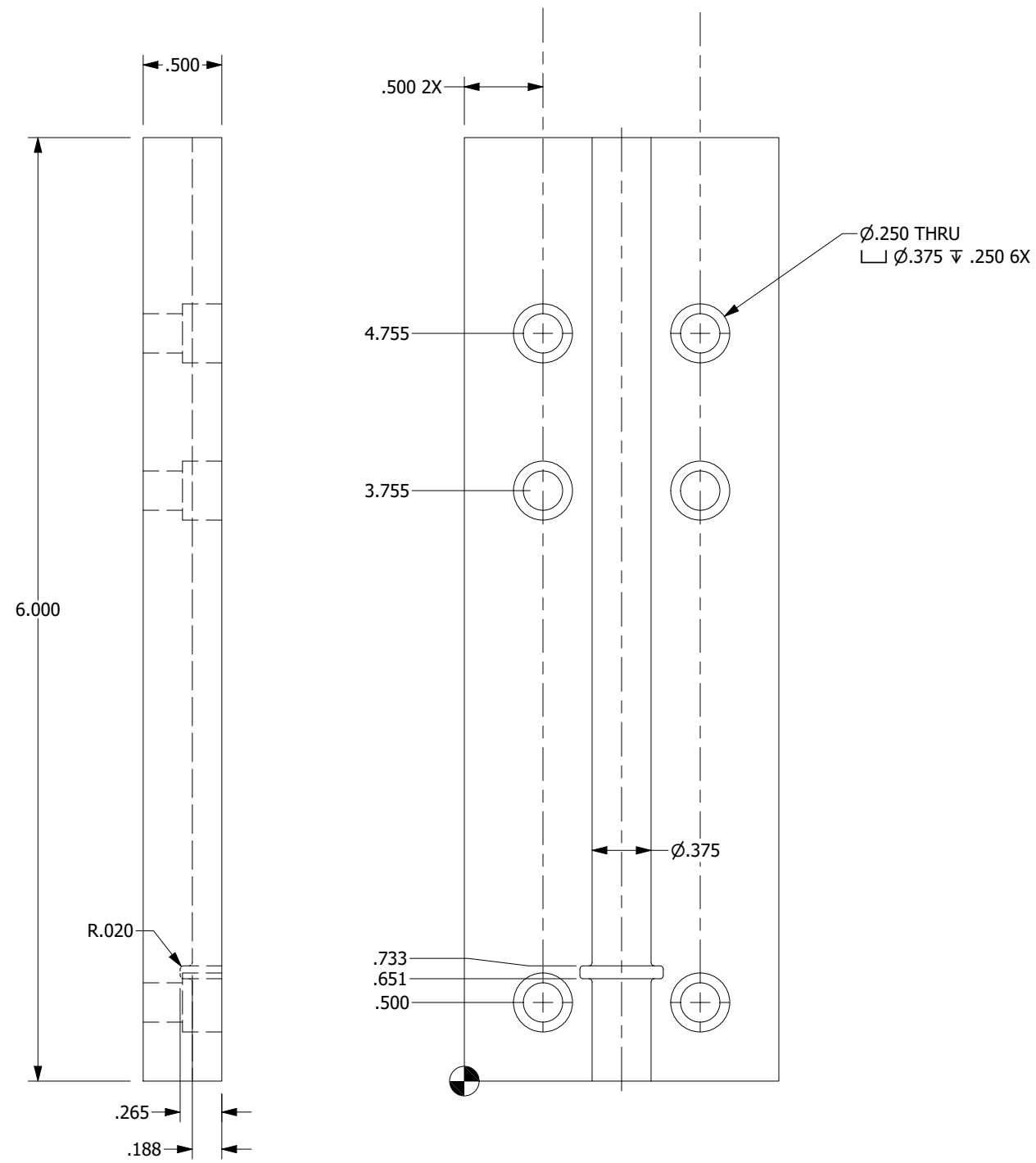
PROPRIETARY NOTE: THIS DOCUMENT CONTAINS INFORMATION WHICH IS CONFIDENTIAL AND PROPRIETARY TO MAINSTREAM ENGINEERING CORPORATION AND SHALL NOT BE USED, DUPLICATED OR DISCLOSED TO ANYONE, IN WHOLE OR IN PART, OR USED FOR ANY PURPOSE OTHER THAN WHICH IT WAS OBTAINED WITHOUT FIRST OBTAINING THE EXPRESSED WRITTEN CONSENT FROM MAINSTREAM ENGINEERING CORPORATION.

ITEM NO. 6
PART NO. 52304-2-02

SIZE	CAGE CODE	DRAWING NO.
B	0A0B7	10-52304 drill fixture
SCALE: NONE		REV SHEET 3 OF 6

DRAWING NO. 10-52304 drill fixture

MATERIAL: ALUMINUM ALLOY, 6061, FLAT BAR, 2" X .5"



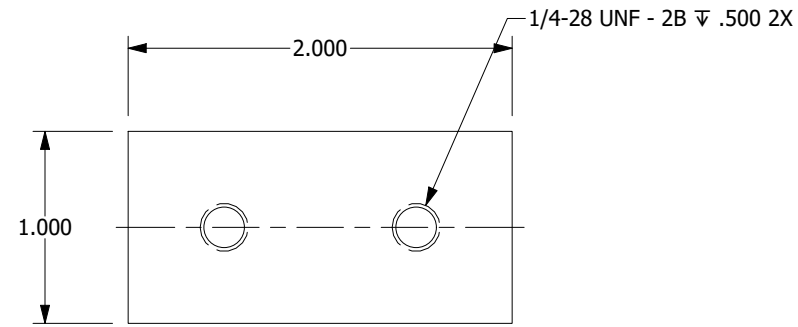
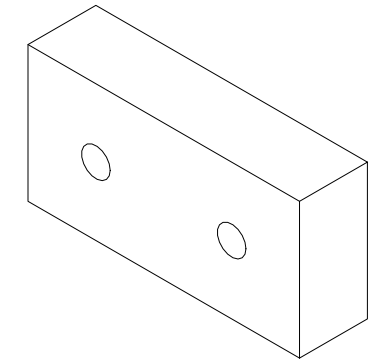
PROPRIETARY NOTE: THIS DOCUMENT CONTAINS INFORMATION WHICH IS CONFIDENTIAL AND PROPRIETARY TO MAINSTREAM ENGINEERING CORPORATION AND SHALL NOT BE USED, DUPLICATED OR DISCLOSED TO ANYONE, IN WHOLE OR IN PART, OR USED FOR ANY PURPOSE OTHER THAN WHICH IT WAS OBTAINED WITHOUT FIRST OBTAINING THE EXPRESSED WRITTEN CONSENT FROM MAINSTREAM ENGINEERING CORPORATION.

ITEM NO. 1
PART NO. 52304-2-03

SIZE	CAGE CODE	DRAWING NO.
B	0A0B7	10-52304 drill fixture
SCALE: NONE	REV	SHEET 4 OF 6

DRAWING NO. 10-52304 drill fixture

MATERIAL: ALUMINUM ALLOY, 6061, FLAT BAR, 2" X .5"



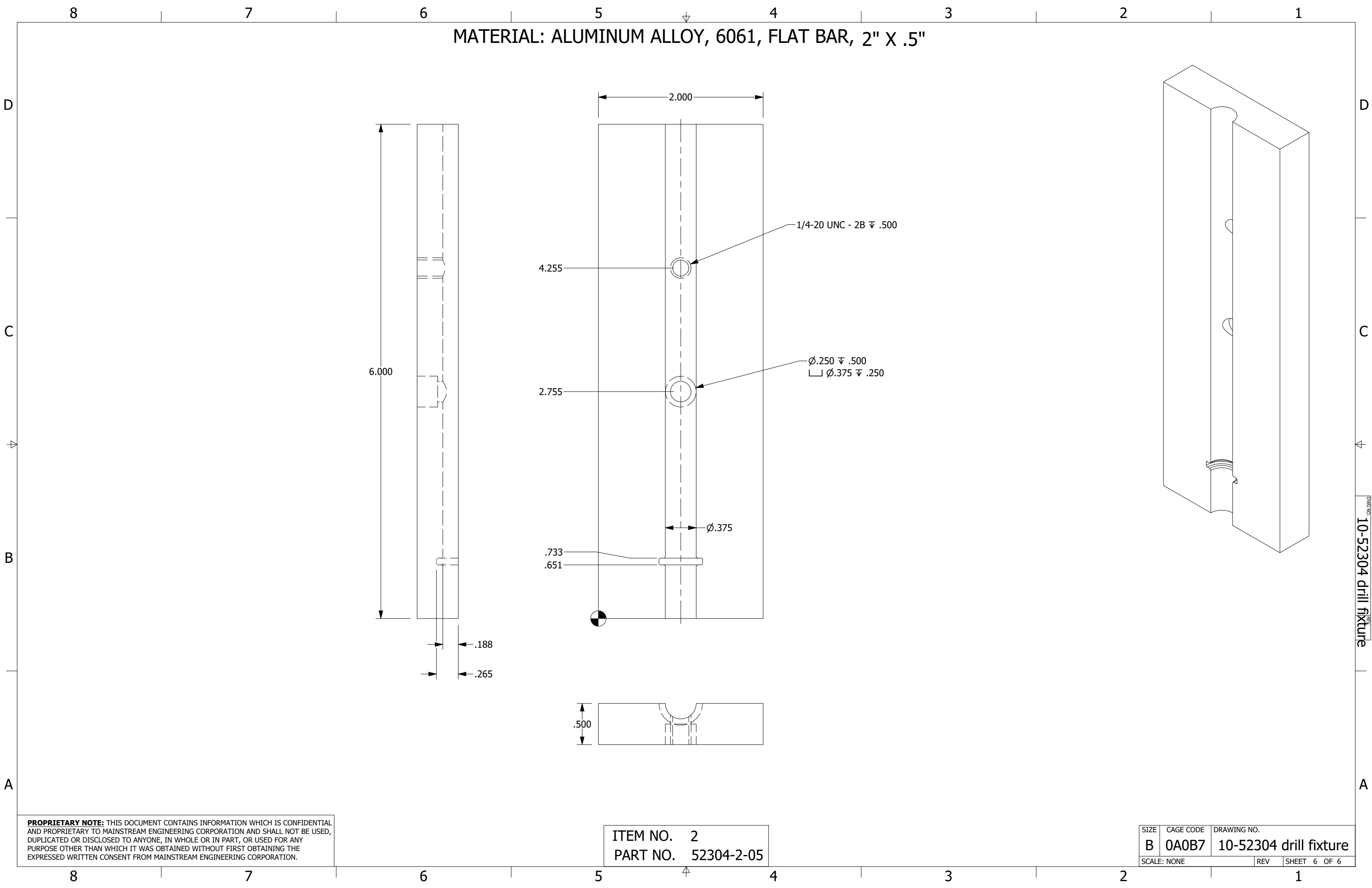
PROPRIETARY NOTE: THIS DOCUMENT CONTAINS INFORMATION WHICH IS CONFIDENTIAL AND PROPRIETARY TO MAINSTREAM ENGINEERING CORPORATION AND SHALL NOT BE USED, DUPLICATED OR DISCLOSED TO ANYONE, IN WHOLE OR IN PART, OR USED FOR ANY PURPOSE OTHER THAN WHICH IT WAS OBTAINED WITHOUT FIRST OBTAINING THE EXPRESSED WRITTEN CONSENT FROM MAINSTREAM ENGINEERING CORPORATION.

ITEM NO. 7
PART NO. 52304-2-04

SIZE	CAGE CODE	DRAWING NO.
B	0A0B7	10-52304 drill fixture
SCALE: NONE		REV SHEET 5 OF 6

DWG NO. 10-52304 drill fixture

MATERIAL: ALUMINUM ALLOY, 6061, FLAT BAR, 2" X .5"



PROPRIETARY NOTE: THIS DOCUMENT CONTAINS INFORMATION WHICH IS CONFIDENTIAL AND PROPRIETARY TO MAINSTREAM ENGINEERING CORPORATION AND SHALL NOT BE USED, DUPLICATED OR DISCLOSED TO ANYONE, IN WHOLE OR IN PART, OR USED FOR ANY PURPOSE OTHER THAN WHICH IT WAS OBTAINED WITHOUT FIRST OBTAINING THE EXPRESSED WRITTEN CONSENT FROM MAINSTREAM ENGINEERING CORPORATION.

ITEM NO. 2
PART NO. 52304-2-05

SIZE	CAGE CODE	DRAWING NO.
B	0A0B7	10-52304 drill fixture
SCALE: NONE	REV	SHEET 6 OF 6

DRAWING NO. 10-52304 drill fixture