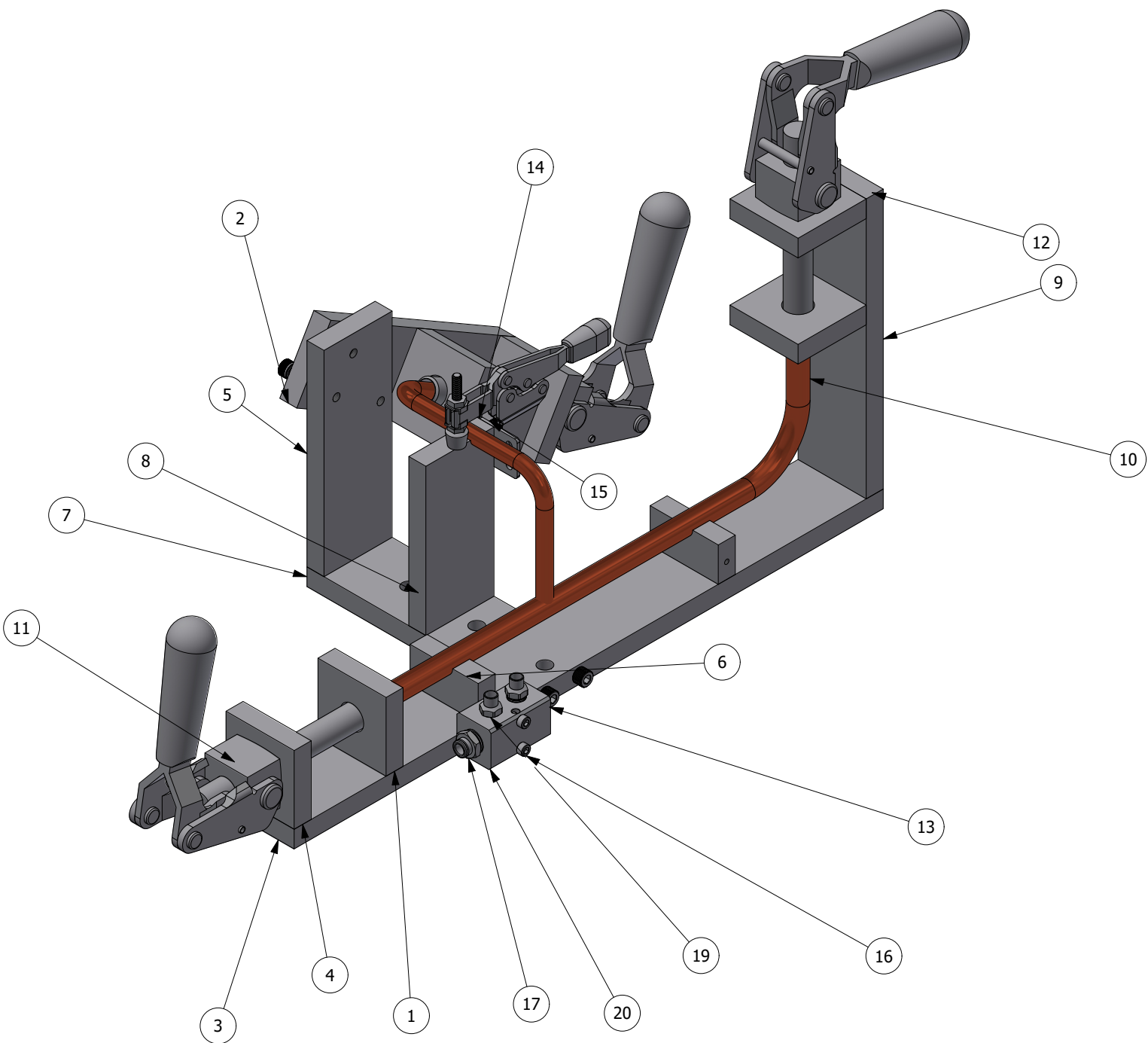


NOTES:

1. INTERPRET THIS DRAWING IN ACCORDANCE WITH ASME Y14.100.
2. REMOVE ALL BURRS AND SHARP EDGES.

REVISIONS				
REV	ZONE	DESCRIPTION	DATE	APPROVED
A				GSC



ITEM	PART NUMBER	QTY	NOMENCLATURE OR DESCRIPTION	SPECIFICATION
20	5469K101	1	Anodized Aluminum Right-Angle Flow Manifold	
19	5520K172	2	Solder-Connect Fitting for Copper Tubing	
18	44605K232	1	Low-Pressure Pipe Fitting	
17	51235K108	1	Push-to-Connect Tube Fitting with Universal Thread	
16	90128A201	2	Zinc-Plated Alloy Steel Socket Head Screw	
15	90128A192	2	Zinc-Plated Alloy Steel Socket Head Screw	
14	2423N11	1	Side-Mount Hold-Down Toggle Clamp	
13	92196A340	2	18-8 Stainless Steel Socket Head Screw	
12	90128A363	25	Zinc-Plated Alloy Steel Socket Head Screw	
11	5093A64	3	Push Pull Toggle Clamp	
10	10-52308 placeholder pipes	1	Copper, length including fittings	
9	52308-1-11	1	main riser	
8	52308-1-10	1	clamp riser	
7	52308-1-09	1	sub-base	
6	52308-1-07	2	pipe holder	
5	52308-1-05	1	angle riser	
4	52308-1-04	3	toggle clamp mount	
3	52308-1-03	1	main base	
2	52308-1-02	1	angle bracket	
1	52308-1-01	3	pipe orienter	

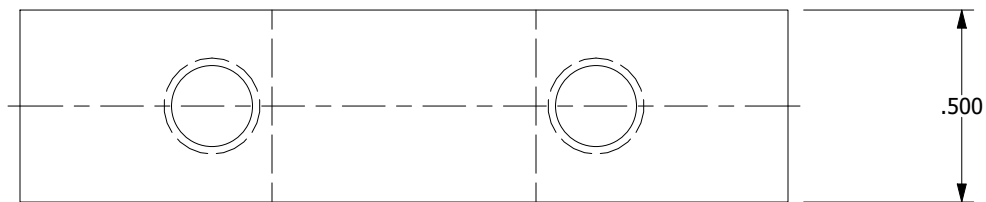
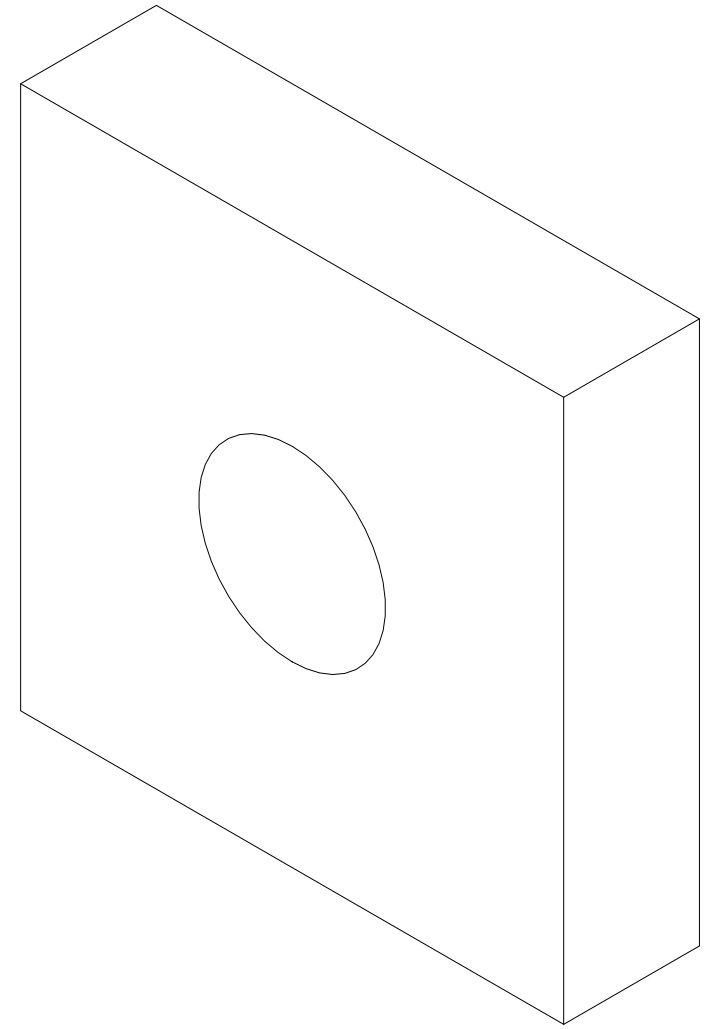
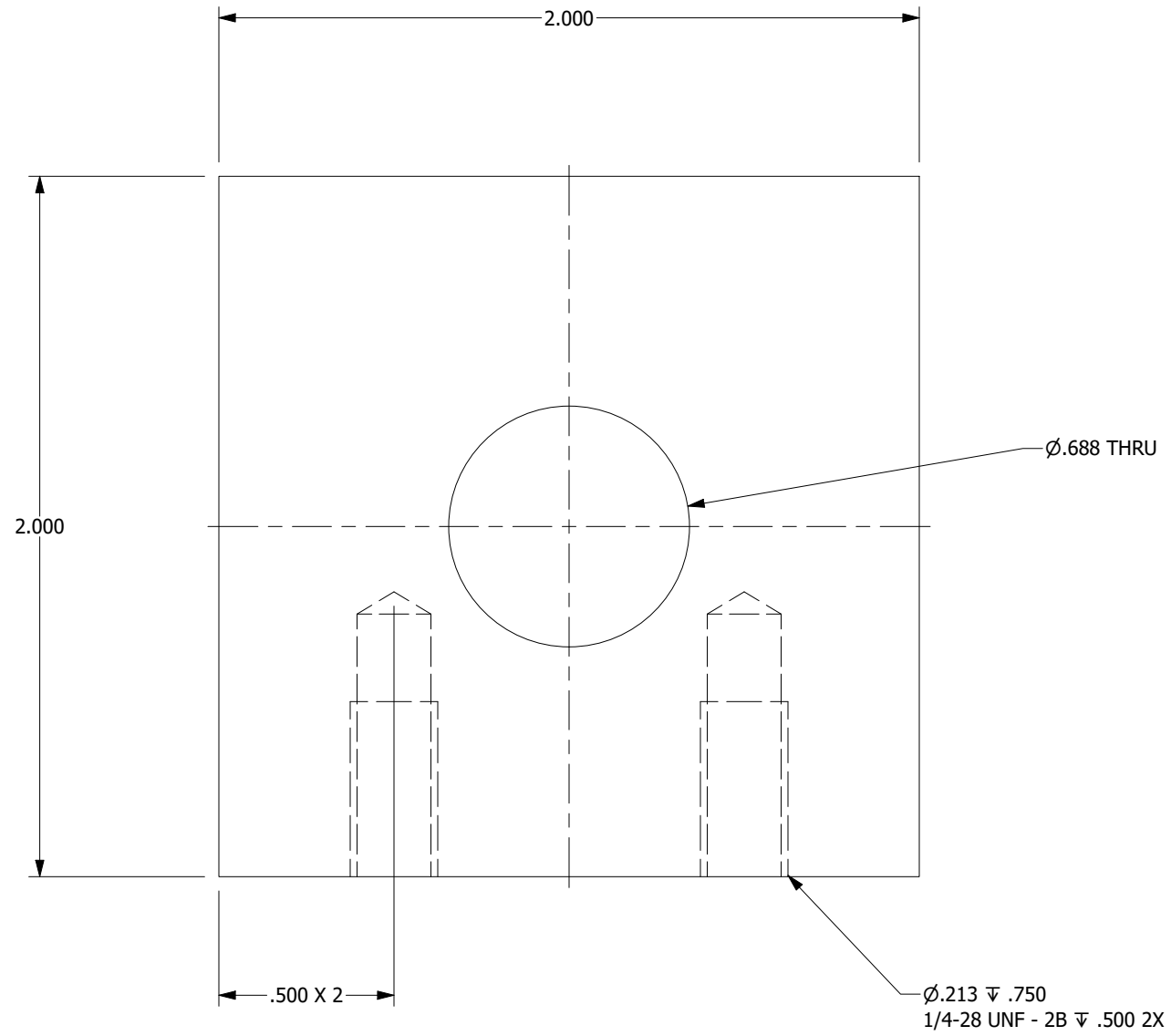
PARTS LIST

<p>QUALITY SYMBOLS</p> <p> DENOTES CRITICAL INSPECTION</p> <p> NEXT ASSY USED ON APPLICATION</p>	<p>UNLESS OTHERWISE SPECIFIED: DIMENSIONS ARE IN INCHES</p> <p>TOLERANCES:</p> <p>ANGLES X ± 1'</p> <p>1 PLACE DIM. X ± .1</p> <p>2 PLACE DIM. X ± .01</p> <p>3 PLACE DIM. X ± .005</p>	<p>CONTRACT NO.</p> <p>DATE</p> <p>B. VILLANUEVA 10/21/2023</p> <p>CHECKED DATE</p>	<p></p> <p>MECHANICAL DATE</p> <p>B. VILLANUEVA 10/21/2023</p> <p>ELECTRICAL DATE</p> <p>OPERATIONS DATE</p> <p>B. BLACH</p> <p>APPROVED DATE</p> <p>G. COLE</p>
	<p>THIRD ANGLE PROJECTION</p> <p></p>	<p>SIZE</p> <p>B</p>	
	<p>CAGE CODE</p> <p>0A0B7</p>	<p>DRAWING NO.</p> <p>10-52308 assembly</p>	
	<p>SCALE: NONE</p> <p>UNIT WT.</p>	<p>REV</p> <p>SHEET 1 OF 10</p>	

PROPRIETARY NOTE: THIS DOCUMENT CONTAINS INFORMATION WHICH IS CONFIDENTIAL AND PROPRIETARY TO MAINSTREAM ENGINEERING CORPORATION AND SHALL NOT BE USED, DUPLICATED OR DISCLOSED TO ANYONE, IN WHOLE OR IN PART, OR USED FOR ANY PURPOSE OTHER THAN WHICH IT WAS OBTAINED WITHOUT FIRST OBTAINING THE EXPRESSED WRITTEN CONSENT FROM MAINSTREAM ENGINEERING CORPORATION.

DRAWING NO. 10-52308 assembly

MATERIAL: ALUMINUM ALLOY, 6061-T6511, FLAT BAR, 2" x 0.5"



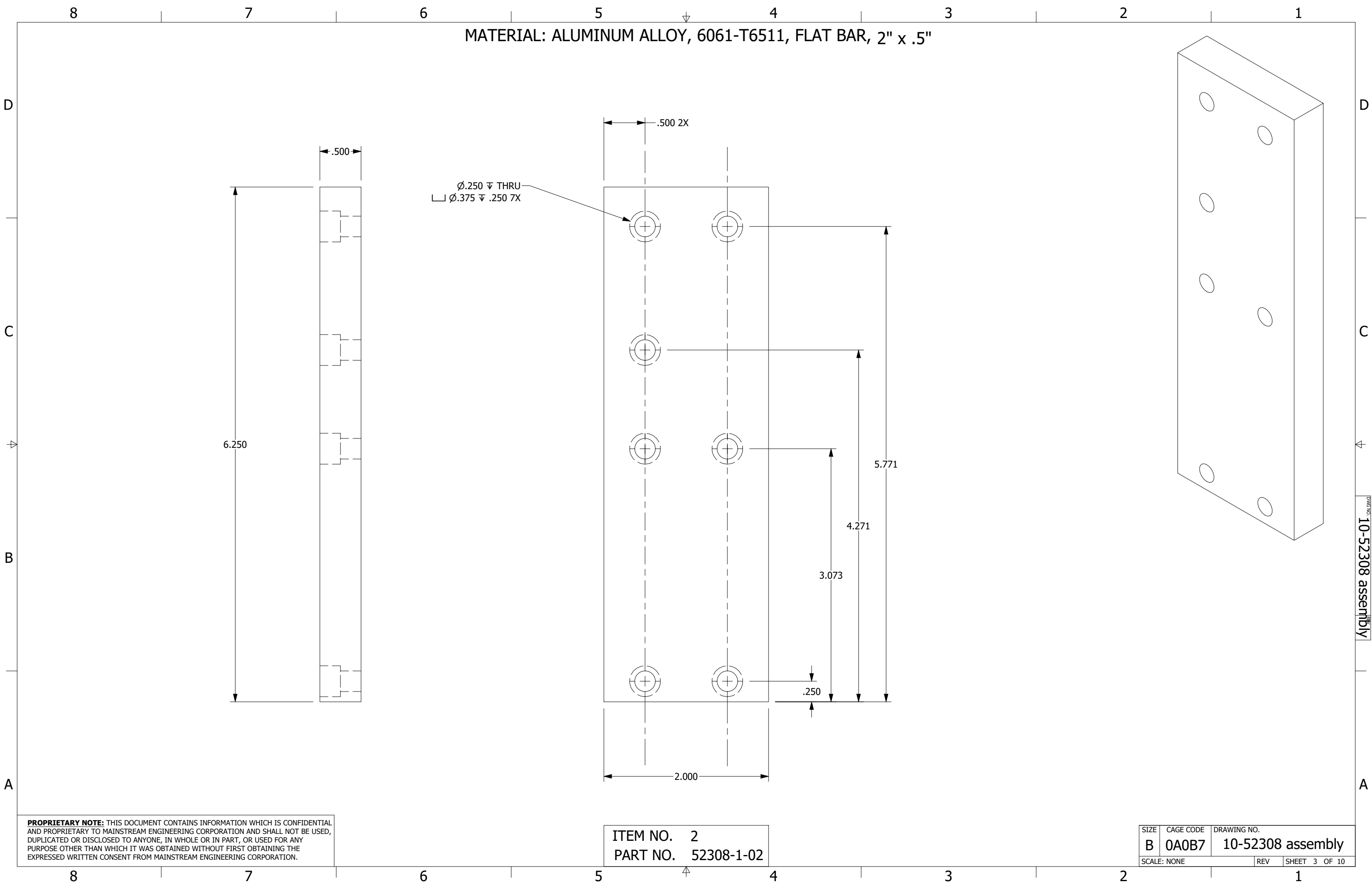
PROPRIETARY NOTE: THIS DOCUMENT CONTAINS INFORMATION WHICH IS CONFIDENTIAL AND PROPRIETARY TO MAINSTREAM ENGINEERING CORPORATION AND SHALL NOT BE USED, DUPLICATED OR DISCLOSED TO ANYONE, IN WHOLE OR IN PART, OR USED FOR ANY PURPOSE OTHER THAN WHICH IT WAS OBTAINED WITHOUT FIRST OBTAINING THE EXPRESSED WRITTEN CONSENT FROM MAINSTREAM ENGINEERING CORPORATION.

ITEM NO. 1
PART NO. 52308-1-01

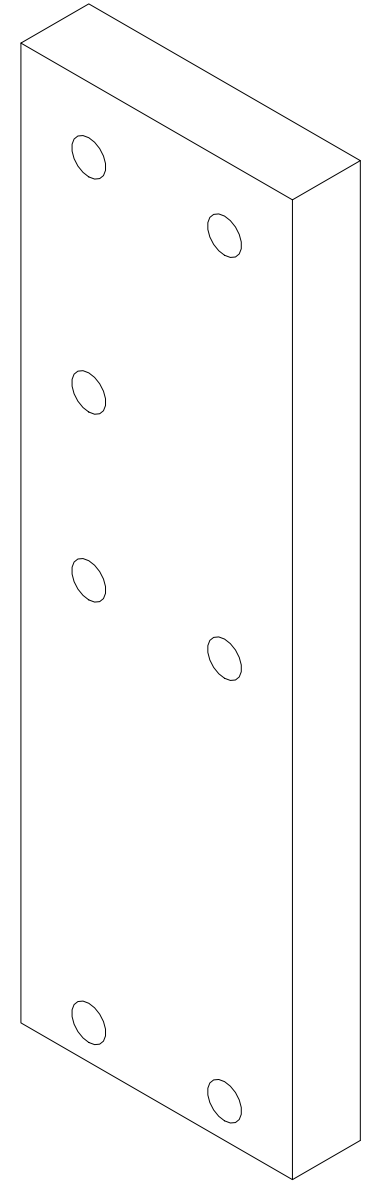
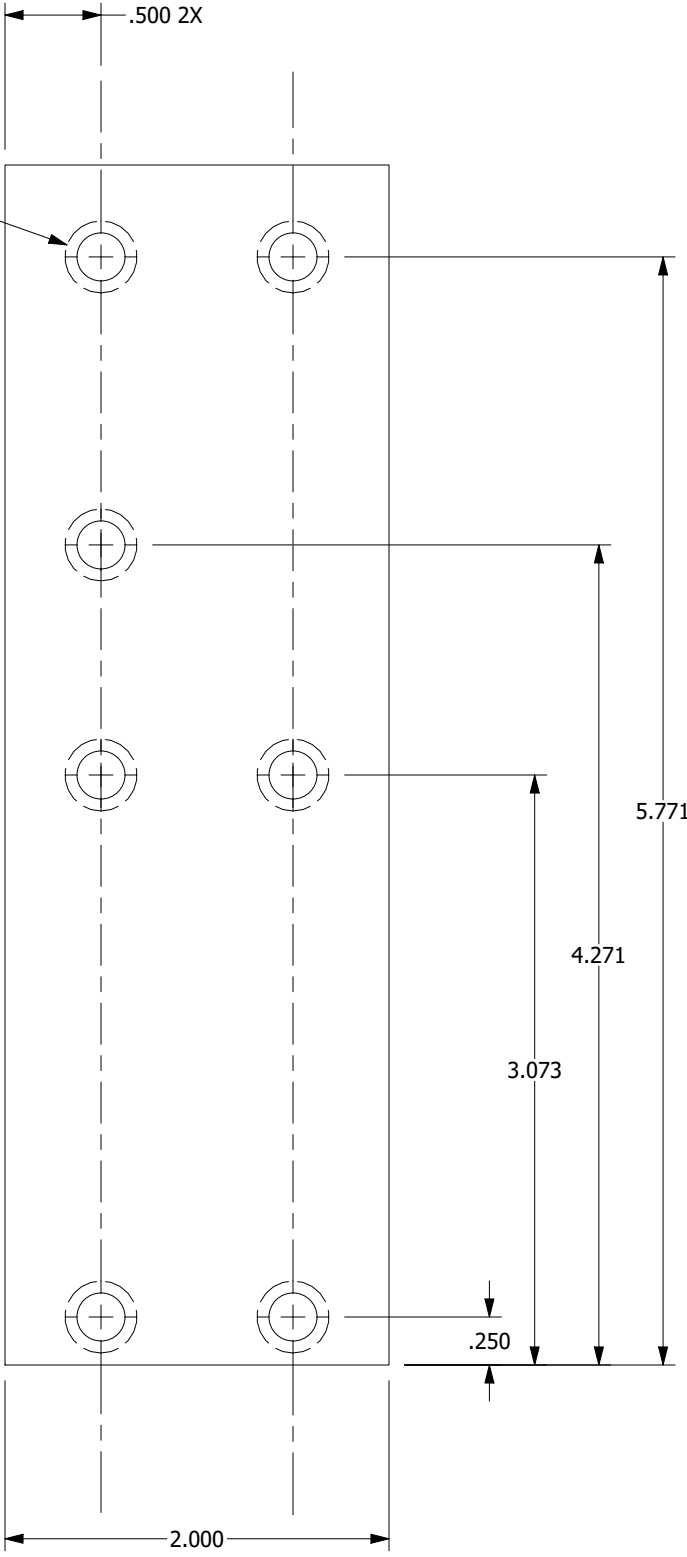
SIZE	CAGE CODE	DRAWING NO.
B	0A0B7	10-52308 assembly
SCALE: NONE	REV	SHEET 2 OF 10

DWG NO. 10-52308 assembly

MATERIAL: ALUMINUM ALLOY, 6061-T6511, FLAT BAR, 2" x .5"



Ø.250 ▽ THRU
 □ Ø.375 ▽ .250 7X



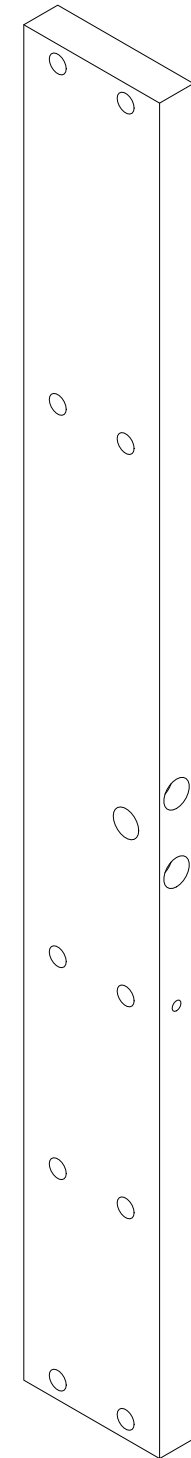
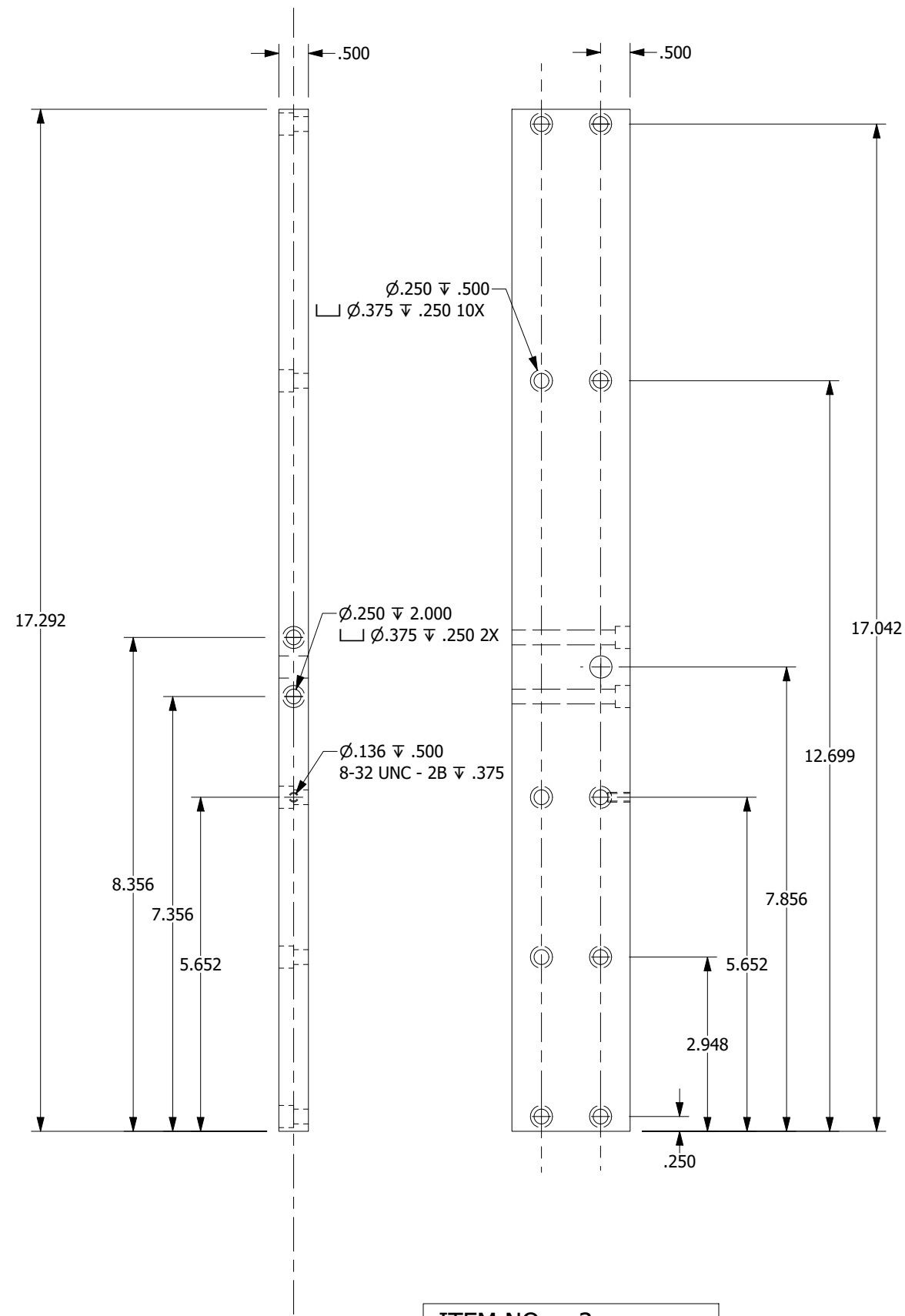
PROPRIETARY NOTE: THIS DOCUMENT CONTAINS INFORMATION WHICH IS CONFIDENTIAL AND PROPRIETARY TO MAINSTREAM ENGINEERING CORPORATION AND SHALL NOT BE USED, DUPLICATED OR DISCLOSED TO ANYONE, IN WHOLE OR IN PART, OR USED FOR ANY PURPOSE OTHER THAN WHICH IT WAS OBTAINED WITHOUT FIRST OBTAINING THE EXPRESSED WRITTEN CONSENT FROM MAINSTREAM ENGINEERING CORPORATION.

ITEM NO. 2
 PART NO. 52308-1-02

SIZE	CAGE CODE	DRAWING NO.
B	0A0B7	10-52308 assembly
SCALE: NONE	REV	SHEET 3 OF 10

DRAWING NO. 10-52308 assembly

MATERIAL: ALUMINUM ALLOY, 6061-T6511, FLAT BAR, 2" x .5"



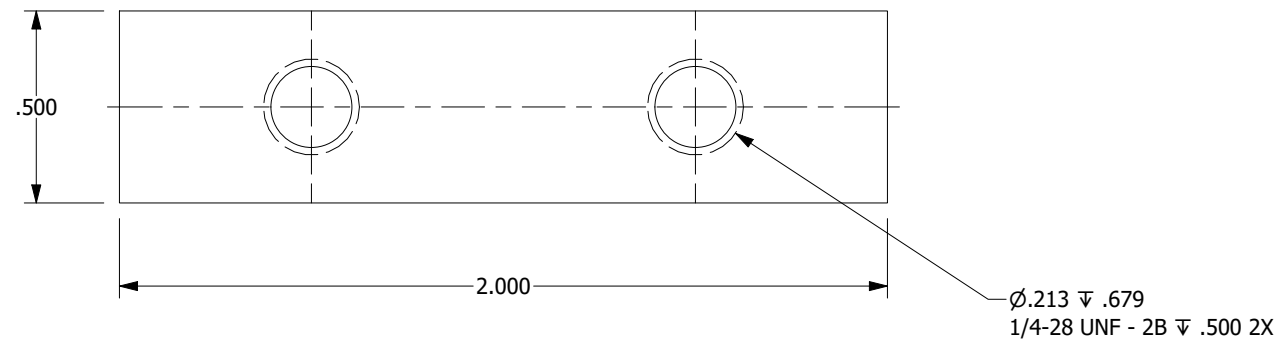
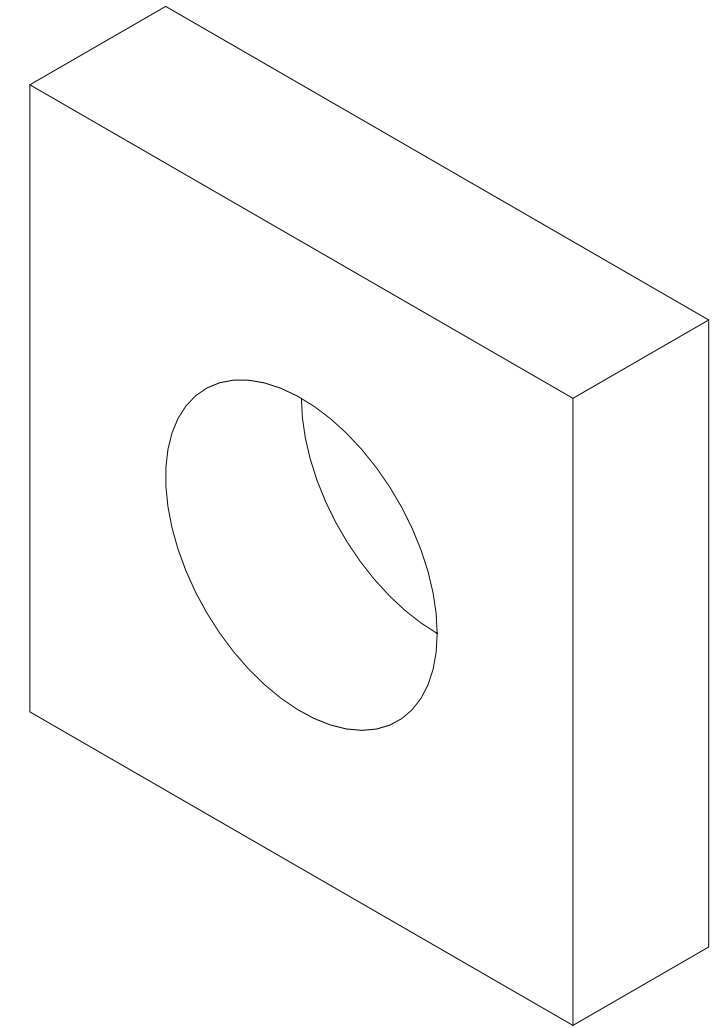
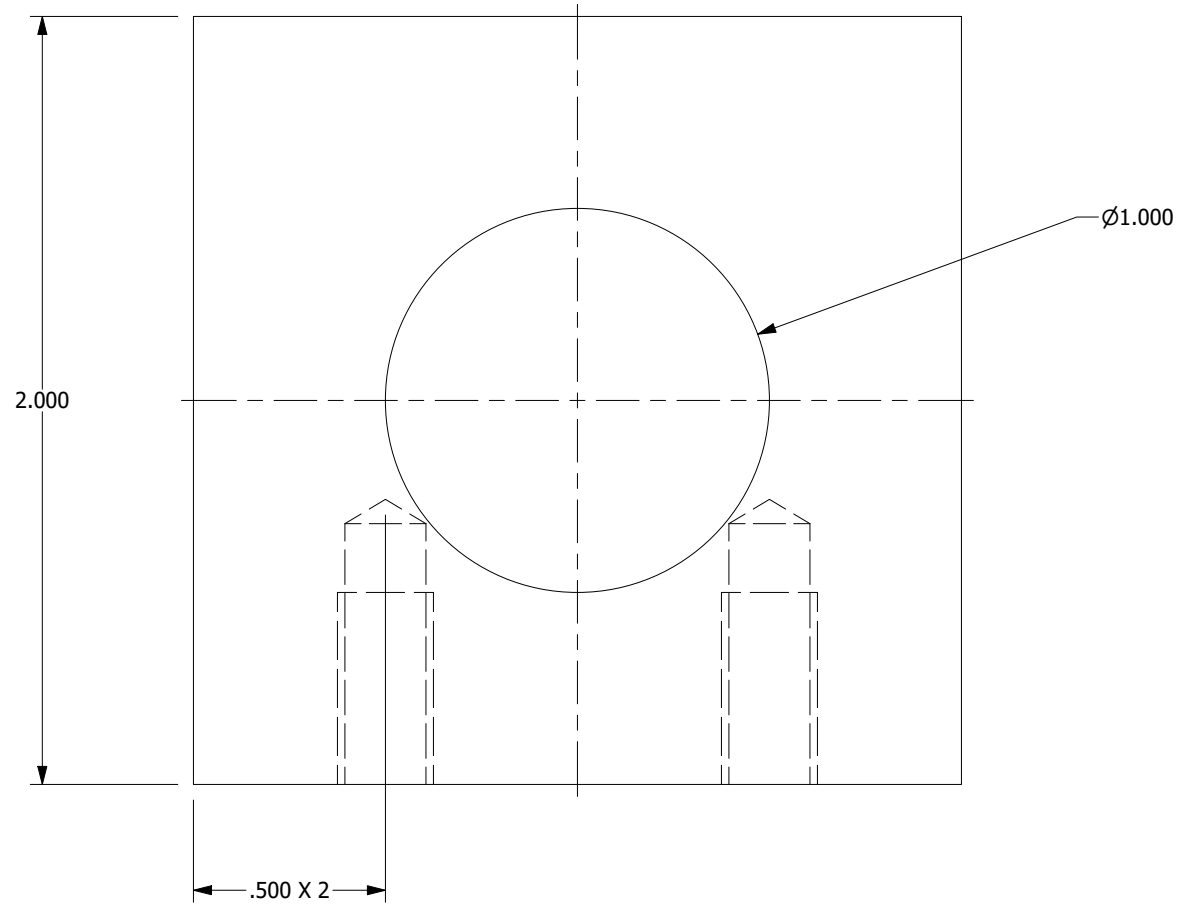
PROPRIETARY NOTE: THIS DOCUMENT CONTAINS INFORMATION WHICH IS CONFIDENTIAL AND PROPRIETARY TO MAINSTREAM ENGINEERING CORPORATION AND SHALL NOT BE USED, DUPLICATED OR DISCLOSED TO ANYONE, IN WHOLE OR IN PART, OR USED FOR ANY PURPOSE OTHER THAN WHICH IT WAS OBTAINED WITHOUT FIRST OBTAINING THE EXPRESSED WRITTEN CONSENT FROM MAINSTREAM ENGINEERING CORPORATION.

ITEM NO. 3
PART NO. 52308-1-03

SIZE	CAGE CODE	DRAWING NO.
B	0A0B7	10-52308 assembly
SCALE: NONE	REV	SHEET 4 OF 10

DRAWING NO. 10-52308 assembly

MATERIAL: ALUMINUM ALLOY, 6061-T6511, FLAT BAR, 2" x .5"



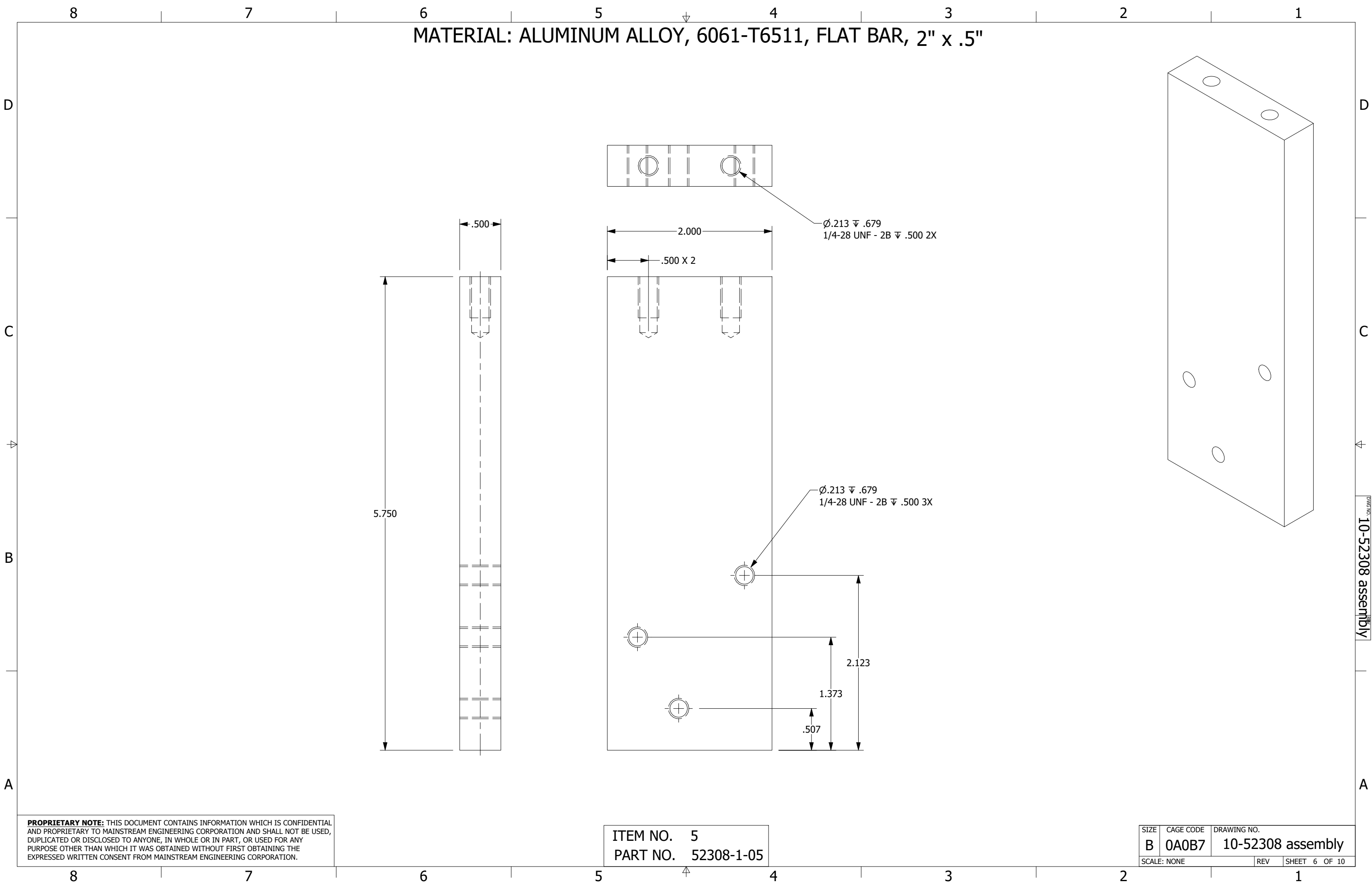
PROPRIETARY NOTE: THIS DOCUMENT CONTAINS INFORMATION WHICH IS CONFIDENTIAL AND PROPRIETARY TO MAINSTREAM ENGINEERING CORPORATION AND SHALL NOT BE USED, DUPLICATED OR DISCLOSED TO ANYONE, IN WHOLE OR IN PART, OR USED FOR ANY PURPOSE OTHER THAN WHICH IT WAS OBTAINED WITHOUT FIRST OBTAINING THE EXPRESSED WRITTEN CONSENT FROM MAINSTREAM ENGINEERING CORPORATION.

ITEM NO. 4
PART NO. 52308-1-04

SIZE	CAGE CODE	DRAWING NO.
B	0A0B7	10-52308 assembly
SCALE: NONE		REV SHEET 5 OF 10

DRAWING NO. 10-52308 assembly

MATERIAL: ALUMINUM ALLOY, 6061-T6511, FLAT BAR, 2" x .5"



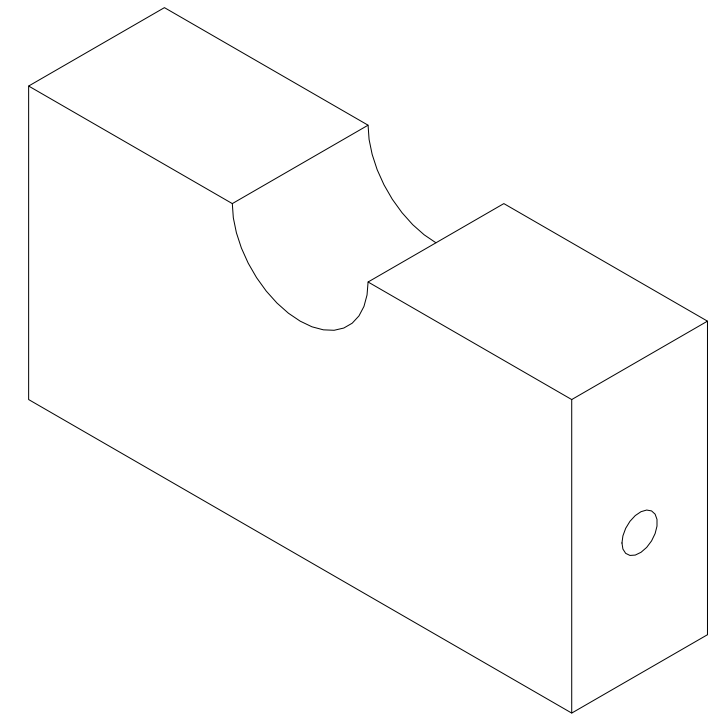
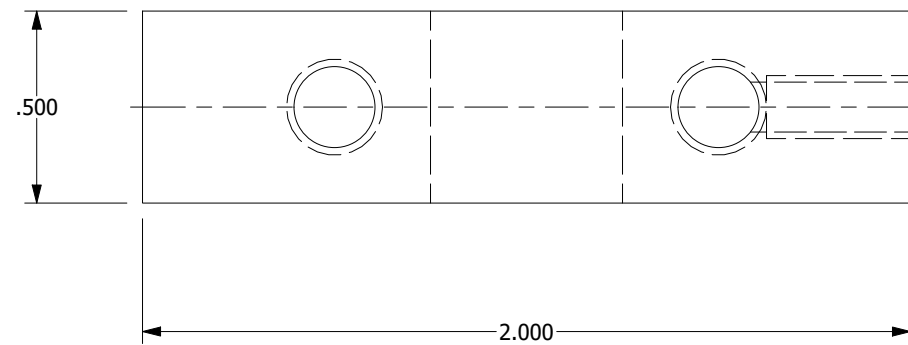
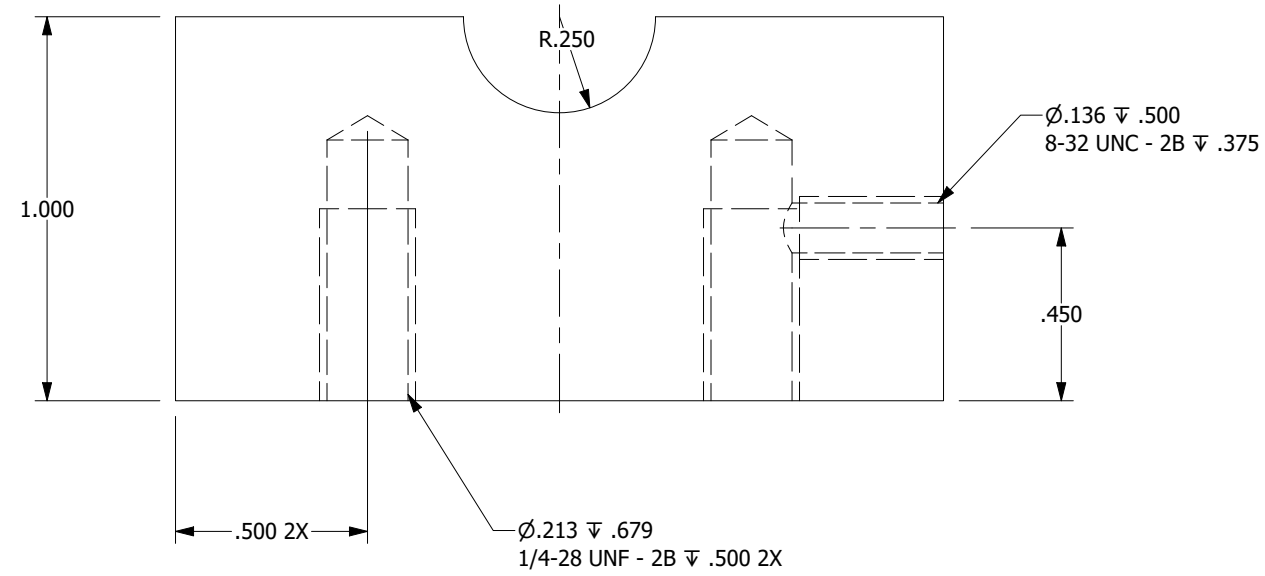
PROPRIETARY NOTE: THIS DOCUMENT CONTAINS INFORMATION WHICH IS CONFIDENTIAL AND PROPRIETARY TO MAINSTREAM ENGINEERING CORPORATION AND SHALL NOT BE USED, DUPLICATED OR DISCLOSED TO ANYONE, IN WHOLE OR IN PART, OR USED FOR ANY PURPOSE OTHER THAN WHICH IT WAS OBTAINED WITHOUT FIRST OBTAINING THE EXPRESSED WRITTEN CONSENT FROM MAINSTREAM ENGINEERING CORPORATION.

ITEM NO. 5
PART NO. 52308-1-05

SIZE	CAGE CODE	DRAWING NO.
B	0A0B7	10-52308 assembly
SCALE: NONE	REV	SHEET 6 OF 10

DRAWING NO. 10-52308 assembly

MATERIAL: ALUMINUM ALLOY, 6061-T6511, FLAT BAR, 2" x .5"



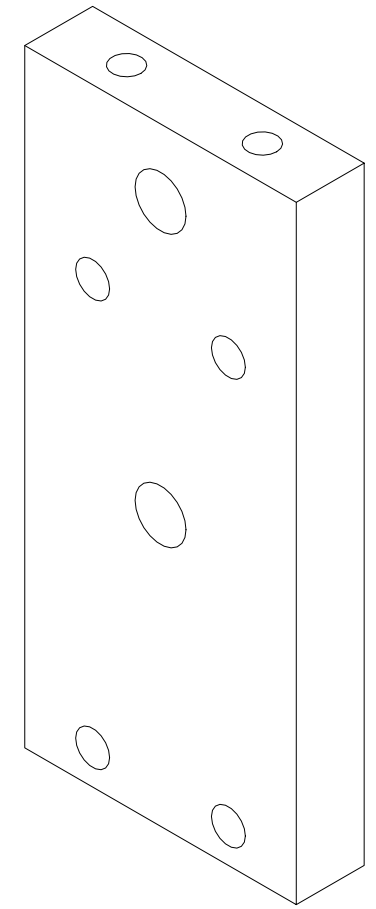
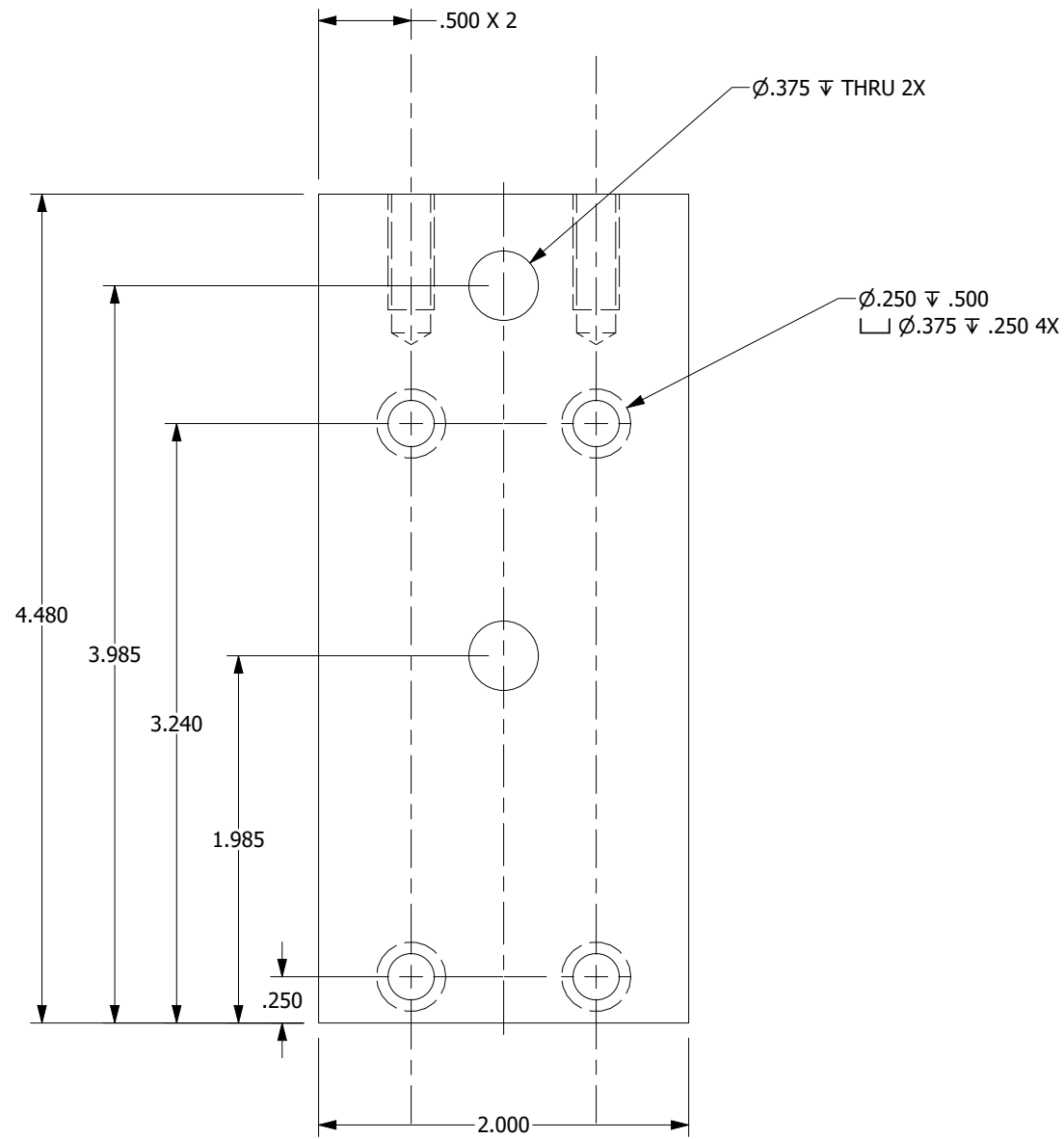
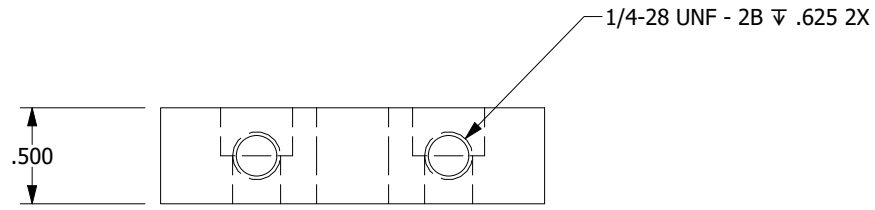
PROPRIETARY NOTE: THIS DOCUMENT CONTAINS INFORMATION WHICH IS CONFIDENTIAL AND PROPRIETARY TO MAINSTREAM ENGINEERING CORPORATION AND SHALL NOT BE USED, DUPLICATED OR DISCLOSED TO ANYONE, IN WHOLE OR IN PART, OR USED FOR ANY PURPOSE OTHER THAN WHICH IT WAS OBTAINED WITHOUT FIRST OBTAINING THE EXPRESSED WRITTEN CONSENT FROM MAINSTREAM ENGINEERING CORPORATION.

ITEM NO. 7
PART NO. 52308-1-07

SIZE	CAGE CODE	DRAWING NO.
B	0A0B7	10-52308 assembly
SCALE: NONE		REV SHEET 7 OF 10

DRAWING NO. 10-52308 assembly

MATERIAL: ALUMINUM ALLOY, 6061-T6511, FLAT BAR, 2" x .5"



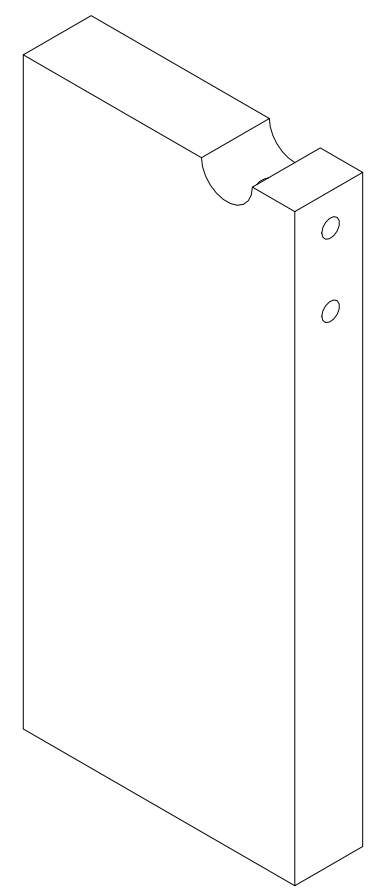
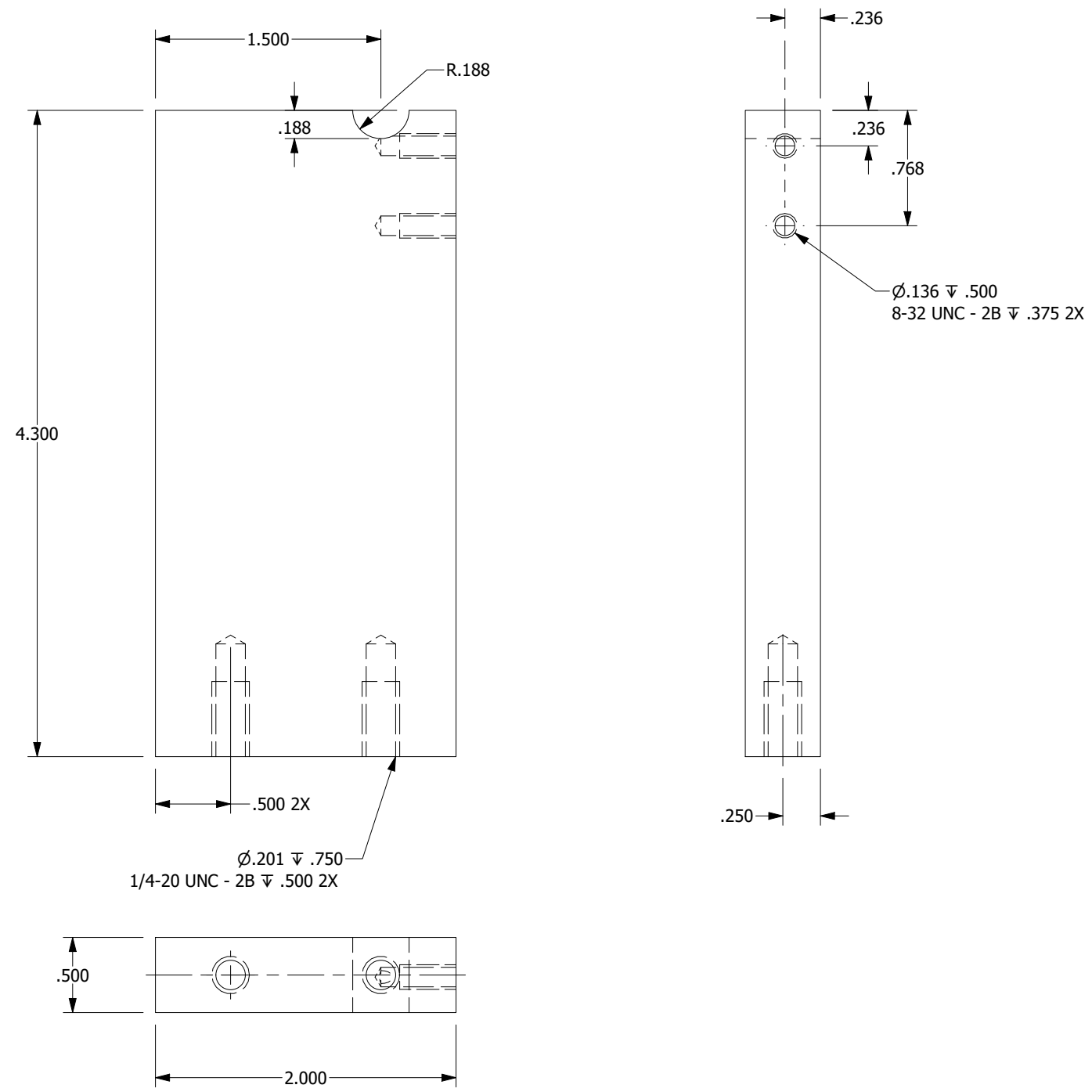
PROPRIETARY NOTE: THIS DOCUMENT CONTAINS INFORMATION WHICH IS CONFIDENTIAL AND PROPRIETARY TO MAINSTREAM ENGINEERING CORPORATION AND SHALL NOT BE USED, DUPLICATED OR DISCLOSED TO ANYONE, IN WHOLE OR IN PART, OR USED FOR ANY PURPOSE OTHER THAN WHICH IT WAS OBTAINED WITHOUT FIRST OBTAINING THE EXPRESSED WRITTEN CONSENT FROM MAINSTREAM ENGINEERING CORPORATION.

ITEM NO. 9
 PART NO. 52308-1-09

SIZE	CAGE CODE	DRAWING NO.
B	0A0B7	10-52308 assembly
SCALE: NONE		REV SHEET 8 OF 10

DRAWING NO. 10-52308 assembly

MATERIAL: ALUMINUM ALLOY, 6061-T6511, FLAT BAR, 2" x .5"



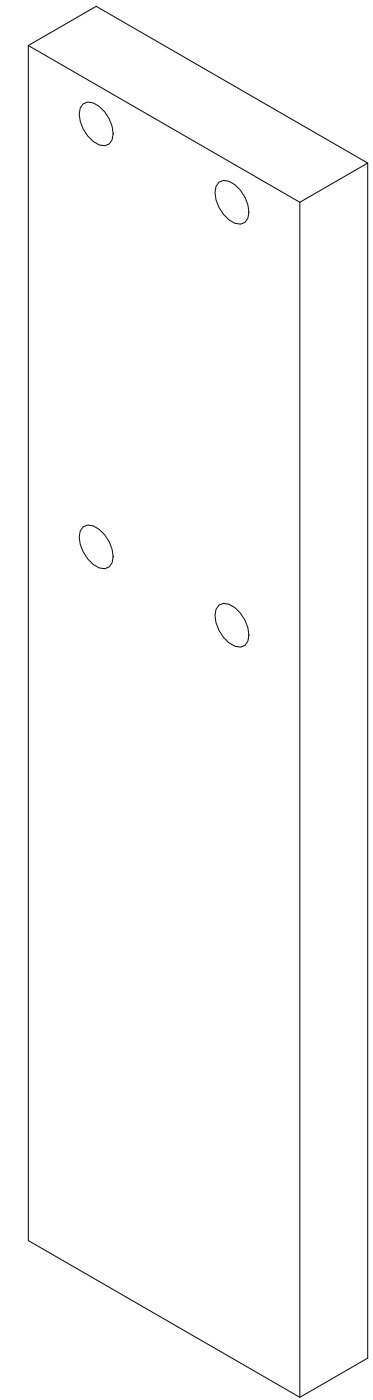
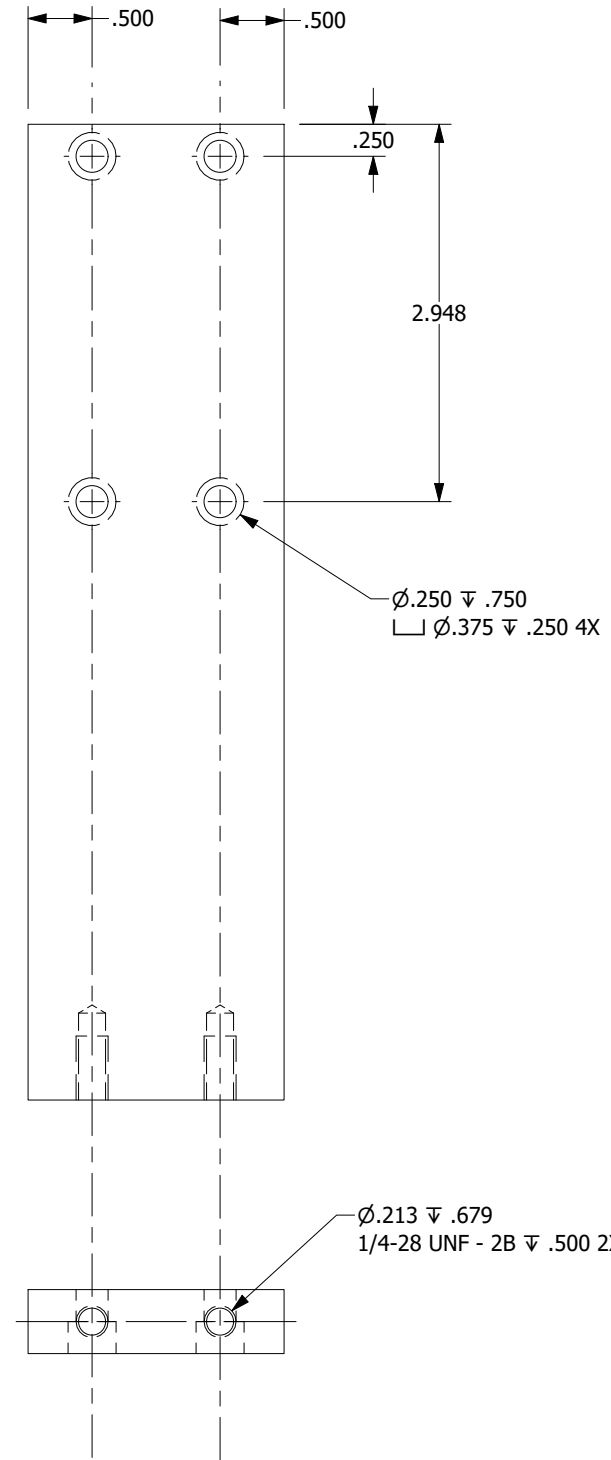
PROPRIETARY NOTE: THIS DOCUMENT CONTAINS INFORMATION WHICH IS CONFIDENTIAL AND PROPRIETARY TO MAINSTREAM ENGINEERING CORPORATION AND SHALL NOT BE USED, DUPLICATED OR DISCLOSED TO ANYONE, IN WHOLE OR IN PART, OR USED FOR ANY PURPOSE OTHER THAN WHICH IT WAS OBTAINED WITHOUT FIRST OBTAINING THE EXPRESSED WRITTEN CONSENT FROM MAINSTREAM ENGINEERING CORPORATION.

ITEM NO. 10
PART NO. 52308-1-10

SIZE	CAGE CODE	DRAWING NO.
B	0A0B7	10-52308 assembly
SCALE: NONE		REV SHEET 9 OF 10

DRAWING NO. 10-52308 assembly

MATERIAL: ALUMINUM ALLOY, 6061-T6511, FLAT BAR, 2" x .5"



PROPRIETARY NOTE: THIS DOCUMENT CONTAINS INFORMATION WHICH IS CONFIDENTIAL AND PROPRIETARY TO MAINSTREAM ENGINEERING CORPORATION AND SHALL NOT BE USED, DUPLICATED OR DISCLOSED TO ANYONE, IN WHOLE OR IN PART, OR USED FOR ANY PURPOSE OTHER THAN WHICH IT WAS OBTAINED WITHOUT FIRST OBTAINING THE EXPRESSED WRITTEN CONSENT FROM MAINSTREAM ENGINEERING CORPORATION.

ITEM NO. 11
PART NO. 52308-1-11

SIZE	CAGE CODE	DRAWING NO.
B	0A0B7	10-52308 assembly
SCALE: NONE		REV SHEET 10 OF 10

DRAWING NO. 10-52308 assembly