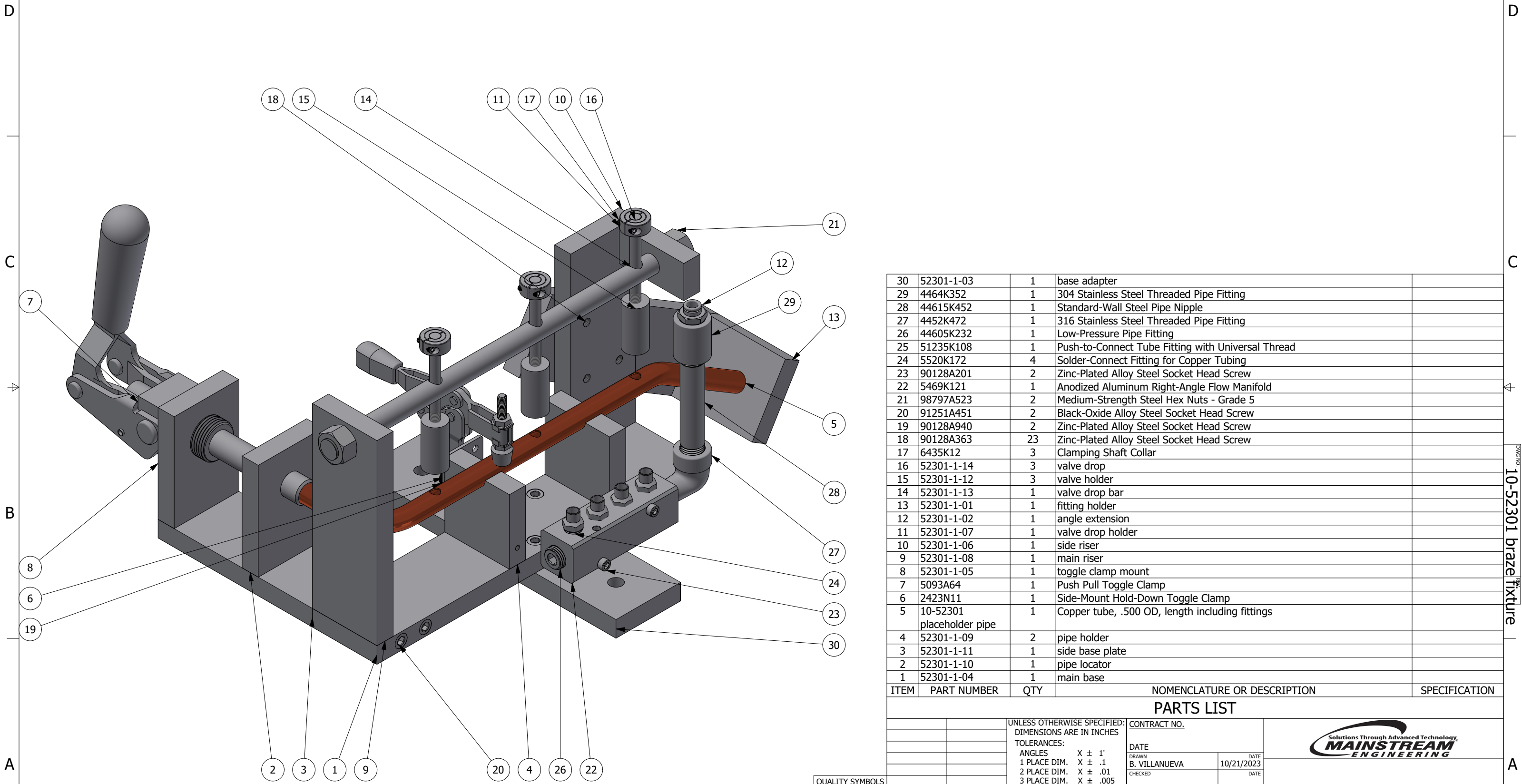


NOTES:

1. INTERPRET THIS DRAWING IN ACCORDANCE WITH ASME Y14.100.
2. REMOVE ALL BURRS AND SHARP EDGES.

REVISIONS				
REV	ZONE	DESCRIPTION	DATE	APPROVED
A				GSC



ITEM	PART NUMBER	QTY	NOMENCLATURE OR DESCRIPTION	SPECIFICATION
30	52301-1-03	1	base adapter	
29	4464K352	1	304 Stainless Steel Threaded Pipe Fitting	
28	44615K452	1	Standard-Wall Steel Pipe Nipple	
27	4452K472	1	316 Stainless Steel Threaded Pipe Fitting	
26	44605K232	1	Low-Pressure Pipe Fitting	
25	51235K108	1	Push-to-Connect Tube Fitting with Universal Thread	
24	5520K172	4	Solder-Connect Fitting for Copper Tubing	
23	90128A201	2	Zinc-Plated Alloy Steel Socket Head Screw	
22	5469K121	1	Anodized Aluminum Right-Angle Flow Manifold	
21	98797A523	2	Medium-Strength Steel Hex Nuts - Grade 5	
20	91251A451	2	Black-Oxide Alloy Steel Socket Head Screw	
19	90128A940	2	Zinc-Plated Alloy Steel Socket Head Screw	
18	90128A363	23	Zinc-Plated Alloy Steel Socket Head Screw	
17	6435K12	3	Clamping Shaft Collar	
16	52301-1-14	3	valve drop	
15	52301-1-12	3	valve holder	
14	52301-1-13	1	valve drop bar	
13	52301-1-01	1	fitting holder	
12	52301-1-02	1	angle extension	
11	52301-1-07	1	valve drop holder	
10	52301-1-06	1	side riser	
9	52301-1-08	1	main riser	
8	52301-1-05	1	toggle clamp mount	
7	5093A64	1	Push Pull Toggle Clamp	
6	2423N11	1	Side-Mount Hold-Down Toggle Clamp	
5	10-52301 placeholder pipe	1	Copper tube, .500 OD, length including fittings	
4	52301-1-09	2	pipe holder	
3	52301-1-11	1	side base plate	
2	52301-1-10	1	pipe locator	
1	52301-1-04	1	main base	

PARTS LIST

<p>QUALITY SYMBOLS</p> <p> DENOTES CRITICAL INSPECTION</p>	<p>UNLESS OTHERWISE SPECIFIED: DIMENSIONS ARE IN INCHES</p> <p>TOLERANCES:</p> <p>ANGLES X ± 1'</p> <p>1 PLACE DIM. X ± .1</p> <p>2 PLACE DIM. X ± .01</p> <p>3 PLACE DIM. X ± .005</p>	<p>CONTRACT NO.</p>	
		<p>DATE</p> <p>DRAWN B. VILLANUEVA 10/21/2023</p> <p>CHECKED DATE</p>	
<p>NEXT ASSY</p>	<p>USED ON</p>	<p>MECHANICAL B. VILLANUEVA 10/21/2023</p> <p>ELECTRICAL DATE</p>	<p>SIZE CAGE CODE DRAWING NO.</p> <p>B 0A0B7 10-52301 braze fixture</p>
<p>APPLICATION</p>	<p>THIRD ANGLE PROJECTION</p>	<p>OPERATIONS B. BLACH</p> <p>APPROVED G. COLE</p>	

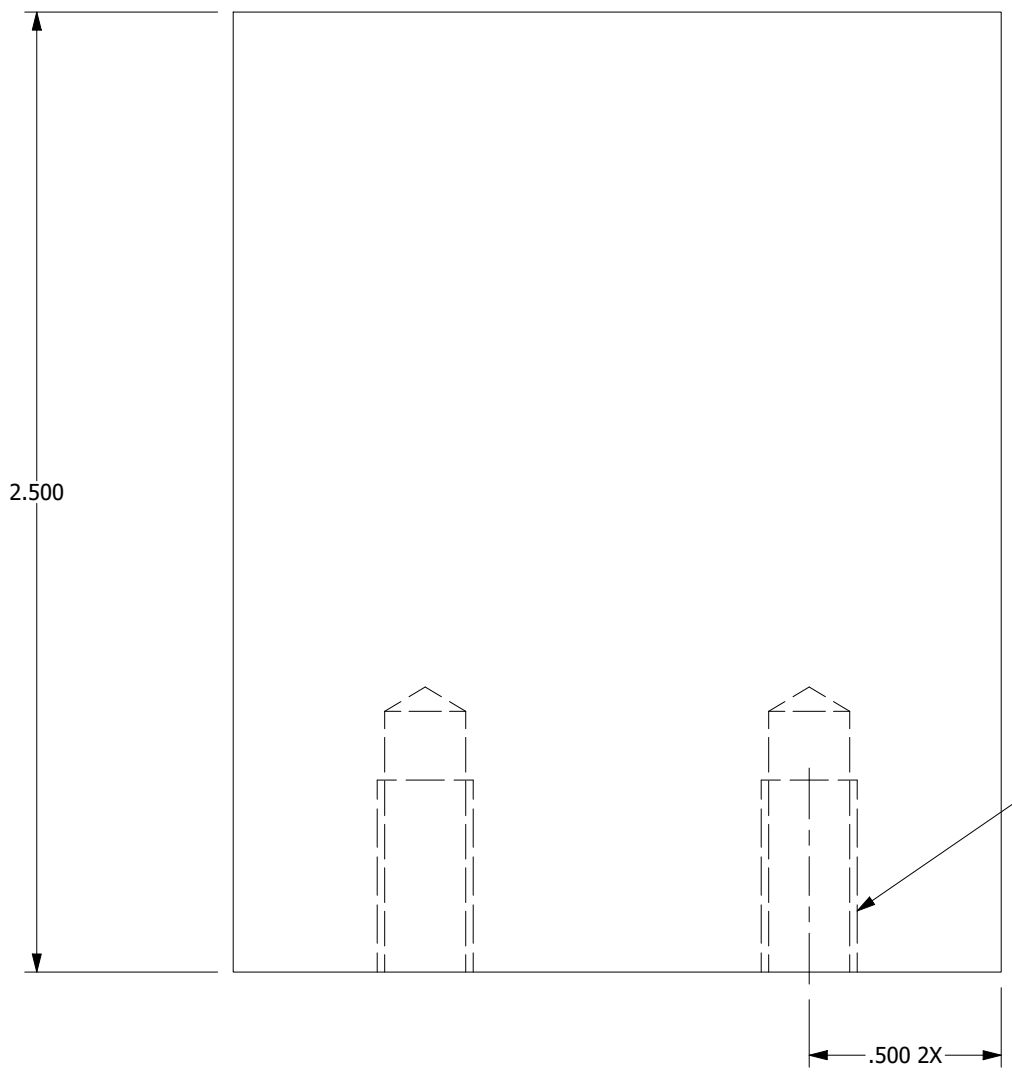
PROPRIETARY NOTE: THIS DOCUMENT CONTAINS INFORMATION WHICH IS CONFIDENTIAL AND PROPRIETARY TO MAINSTREAM ENGINEERING CORPORATION AND SHALL NOT BE USED, DUPLICATED OR DISCLOSED TO ANYONE, IN WHOLE OR IN PART, OR USED FOR ANY PURPOSE OTHER THAN WHICH IT WAS OBTAINED WITHOUT FIRST OBTAINING THE EXPRESSED WRITTEN CONSENT FROM MAINSTREAM ENGINEERING CORPORATION.

DRAWING NO. 10-52301 braze fixture

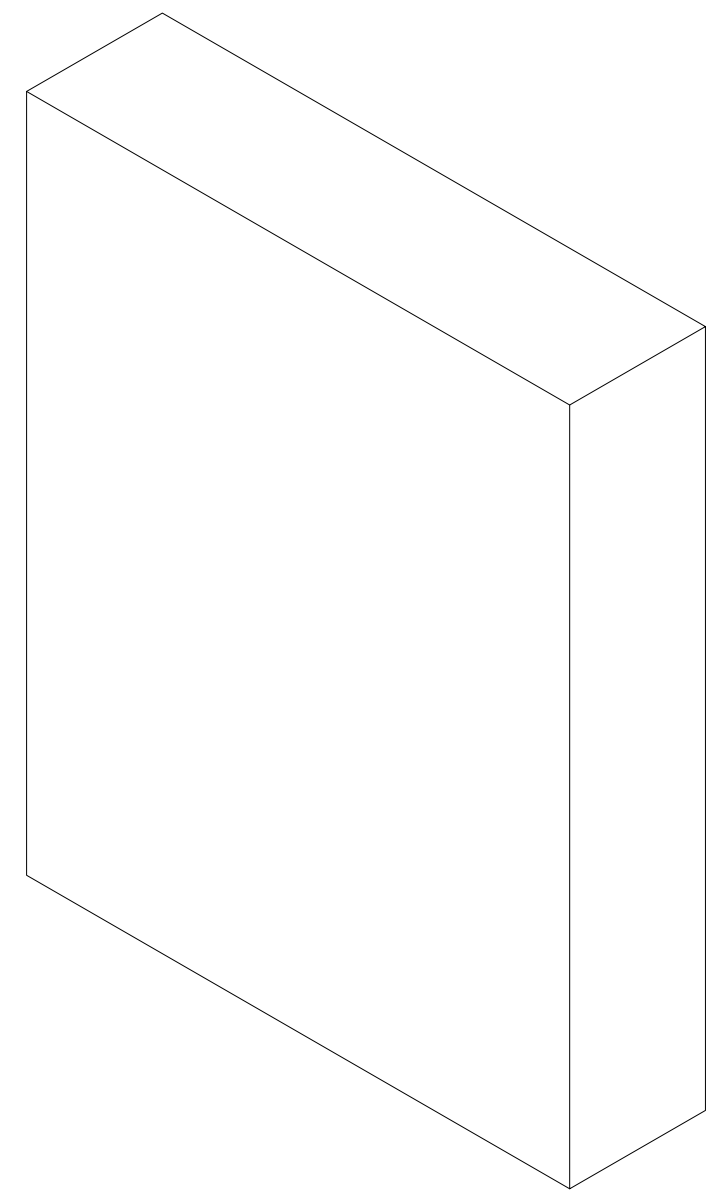
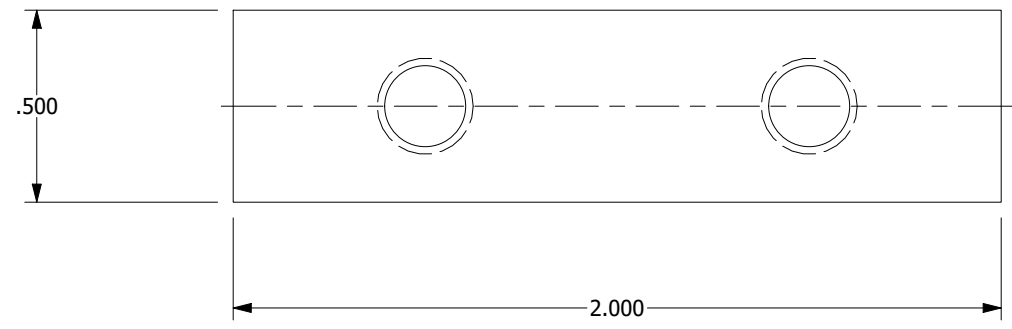
MATERIAL: ALUMINUM ALLOY, 6061, FLAT BAR, 2" X .5"

D
C
B
A

D
C
B
A



1/4-28 UNF - 2B ∇ .500 2X



PROPRIETARY NOTE: THIS DOCUMENT CONTAINS INFORMATION WHICH IS CONFIDENTIAL AND PROPRIETARY TO MAINSTREAM ENGINEERING CORPORATION AND SHALL NOT BE USED, DUPLICATED OR DISCLOSED TO ANYONE, IN WHOLE OR IN PART, OR USED FOR ANY PURPOSE OTHER THAN WHICH IT WAS OBTAINED WITHOUT FIRST OBTAINING THE EXPRESSED WRITTEN CONSENT FROM MAINSTREAM ENGINEERING CORPORATION.

ITEM NO. 13
PART NO. 52301-1-01

SIZE	CAGE CODE	DRAWING NO.
B	0A0B7	10-52301 braze fixture
SCALE: NONE		REV SHEET 2 OF 15

DWG NO. 10-52301 braze fixture

8

7

6

5

4

3

2

1

8

7

6

5

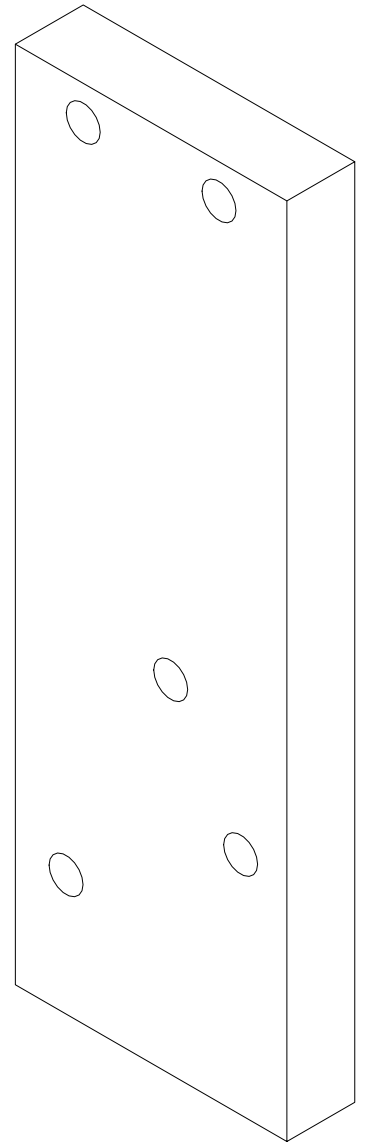
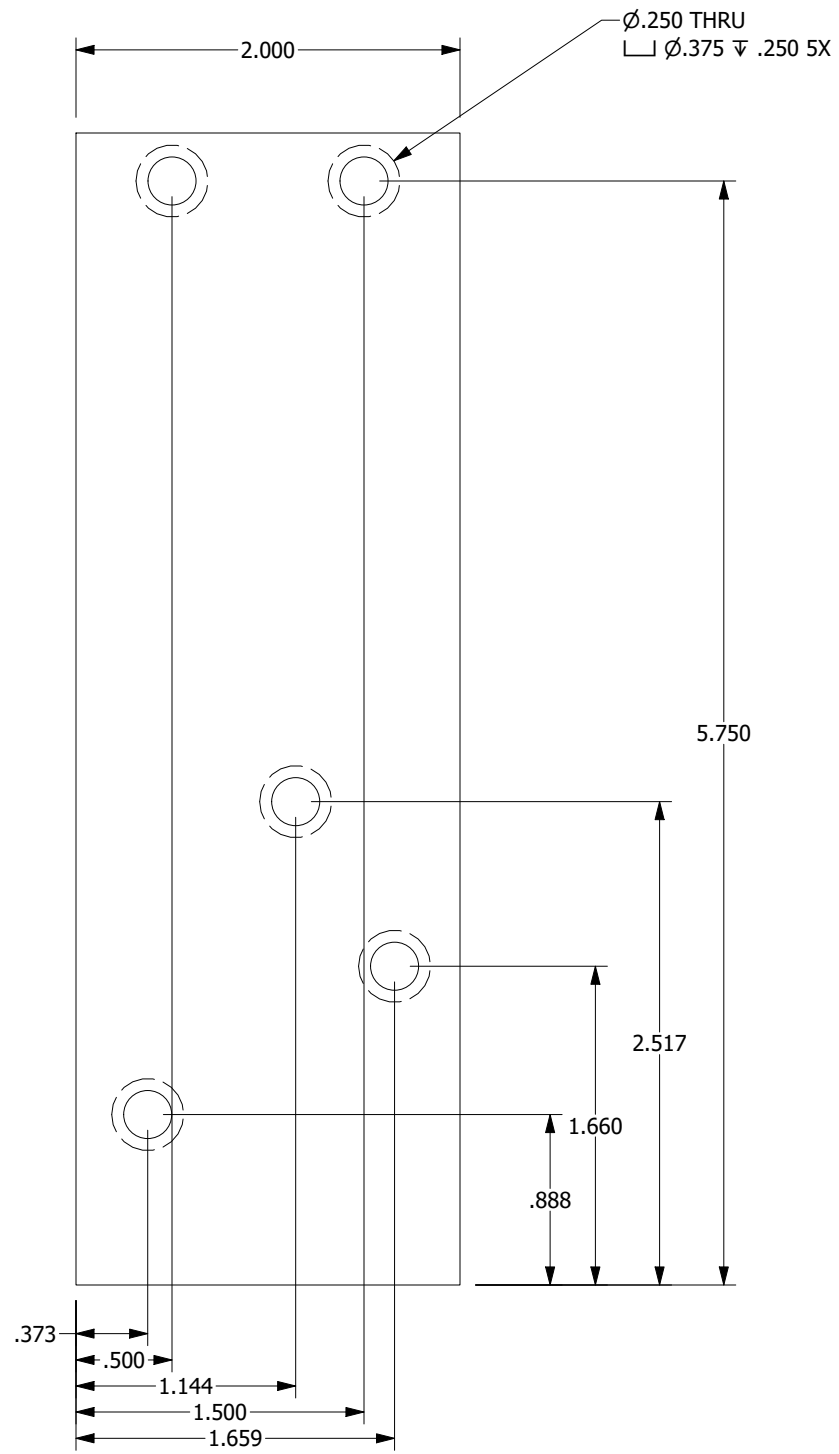
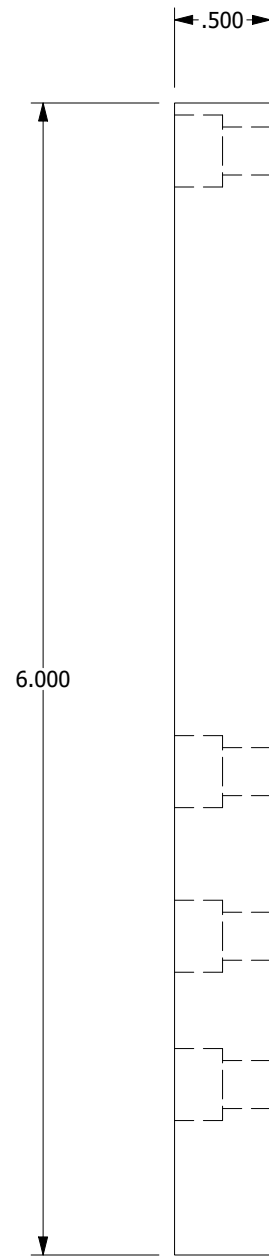
4

3

2

1

MATERIAL: ALUMINUM ALLOY, 6061, FLAT BAR, 2" X .5"



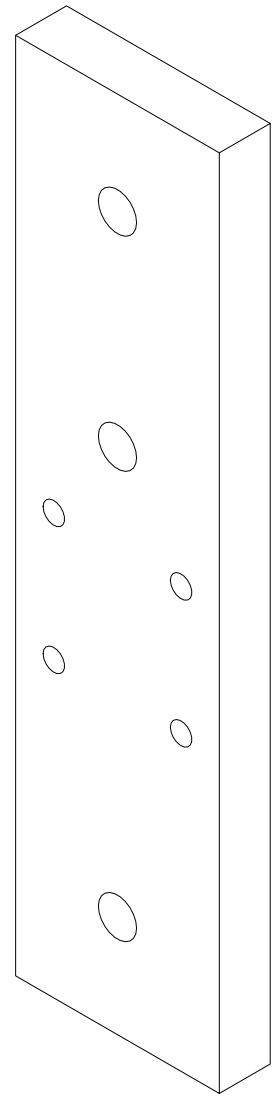
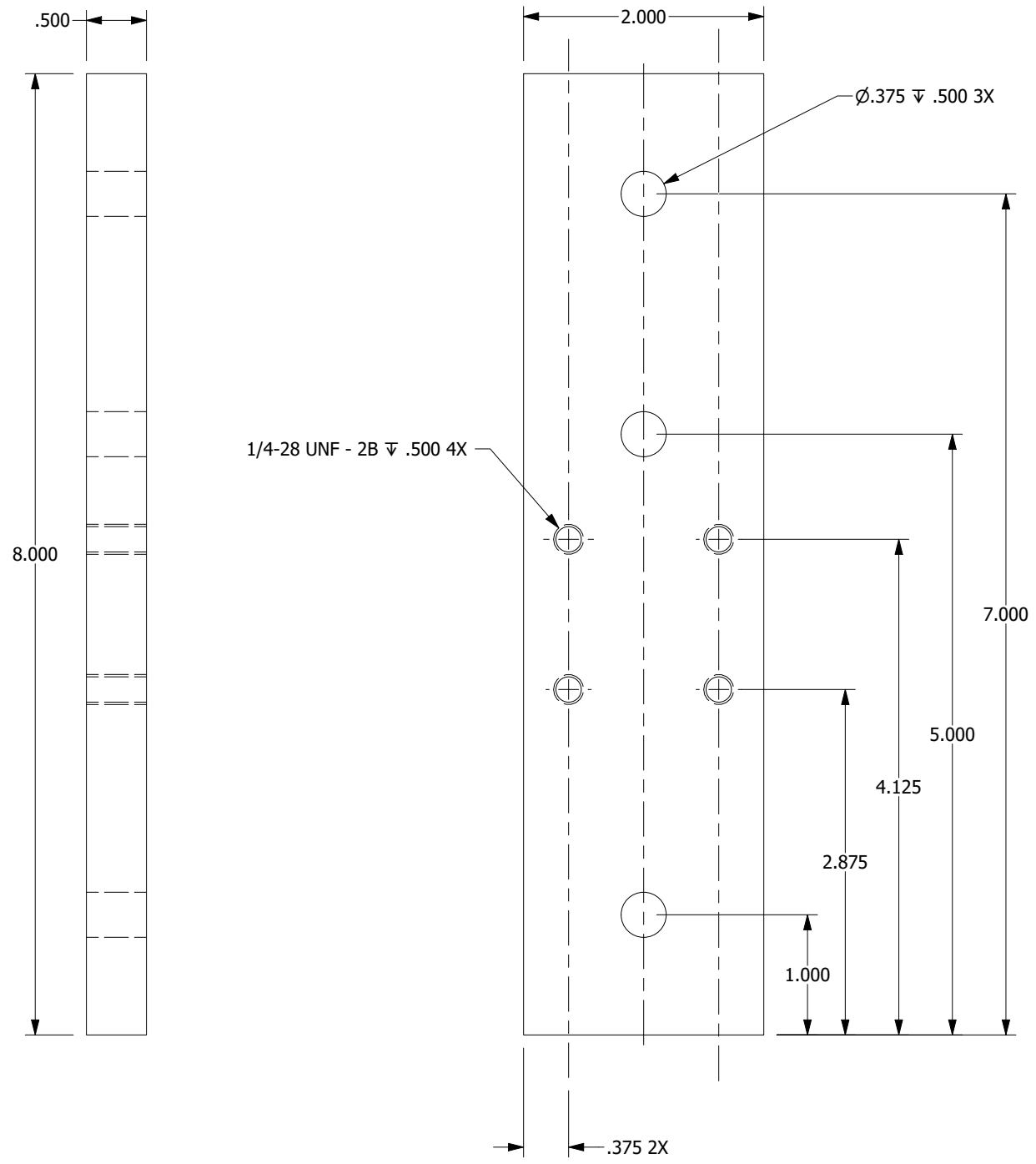
PROPRIETARY NOTE: THIS DOCUMENT CONTAINS INFORMATION WHICH IS CONFIDENTIAL AND PROPRIETARY TO MAINSTREAM ENGINEERING CORPORATION AND SHALL NOT BE USED, DUPLICATED OR DISCLOSED TO ANYONE, IN WHOLE OR IN PART, OR USED FOR ANY PURPOSE OTHER THAN WHICH IT WAS OBTAINED WITHOUT FIRST OBTAINING THE EXPRESSED WRITTEN CONSENT FROM MAINSTREAM ENGINEERING CORPORATION.

ITEM NO. 12
PART NO. 52301-1-02

SIZE	CAGE CODE	DRAWING NO.
B	0A0B7	10-52301 braze fixture
SCALE: NONE		REV SHEET 3 OF 15

DRAWING NO. 10-52301 braze fixture

MATERIAL: ALUMINUM ALLOY, 6061, FLAT BAR, 2" X .5"



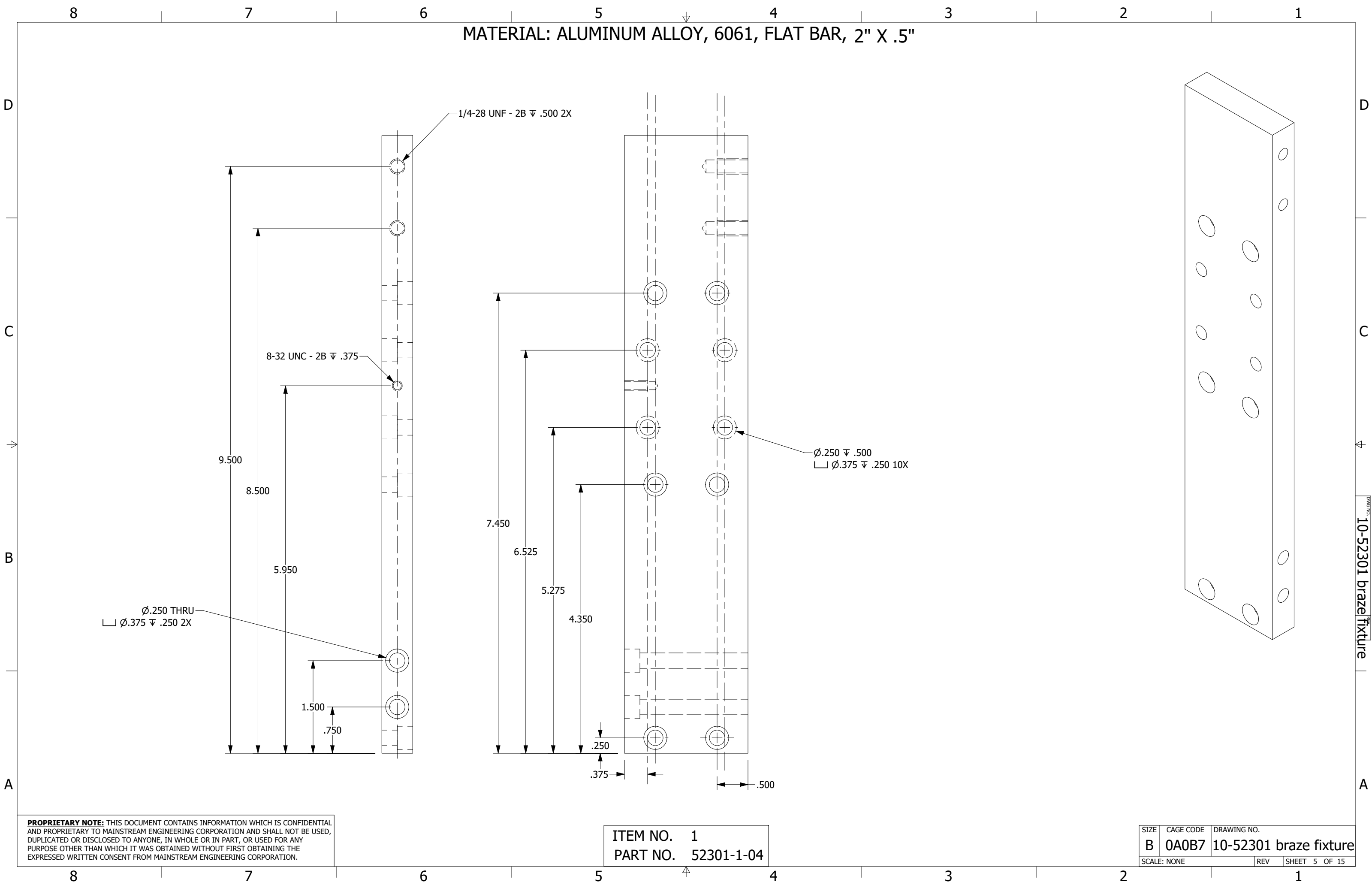
PROPRIETARY NOTE: THIS DOCUMENT CONTAINS INFORMATION WHICH IS CONFIDENTIAL AND PROPRIETARY TO MAINSTREAM ENGINEERING CORPORATION AND SHALL NOT BE USED, DUPLICATED OR DISCLOSED TO ANYONE, IN WHOLE OR IN PART, OR USED FOR ANY PURPOSE OTHER THAN WHICH IT WAS OBTAINED WITHOUT FIRST OBTAINING THE EXPRESSED WRITTEN CONSENT FROM MAINSTREAM ENGINEERING CORPORATION.

ITEM NO. 30
PART NO. 52301-1-03

SIZE	CAGE CODE	DRAWING NO.
B	0A0B7	10-52301 braze fixture
SCALE: NONE		REV SHEET 4 OF 15

DRAWING NO. 10-52301 braze fixture

MATERIAL: ALUMINUM ALLOY, 6061, FLAT BAR, 2" X .5"



D

C

B

A

D

C

B

A

1/4-28 UNF - 2B ∇ .500 2X

8-32 UNC - 2B ∇ .375

∇ ϕ .250 THRU
 ∇ ϕ .375 ∇ .250 2X

∇ ϕ .250 ∇ .500
 ∇ ϕ .375 ∇ .250 10X

PROPRIETARY NOTE: THIS DOCUMENT CONTAINS INFORMATION WHICH IS CONFIDENTIAL AND PROPRIETARY TO MAINSTREAM ENGINEERING CORPORATION AND SHALL NOT BE USED, DUPLICATED OR DISCLOSED TO ANYONE, IN WHOLE OR IN PART, OR USED FOR ANY PURPOSE OTHER THAN WHICH IT WAS OBTAINED WITHOUT FIRST OBTAINING THE EXPRESSED WRITTEN CONSENT FROM MAINSTREAM ENGINEERING CORPORATION.

ITEM NO. 1
PART NO. 52301-1-04

SIZE	CAGE CODE	DRAWING NO.
B	0A0B7	10-52301 braze fixture
SCALE: NONE	REV	SHEET 5 OF 15

DRAWING NO. 10-52301 braze fixture

8

7

6

5

4

3

2

1

8

7

6

5

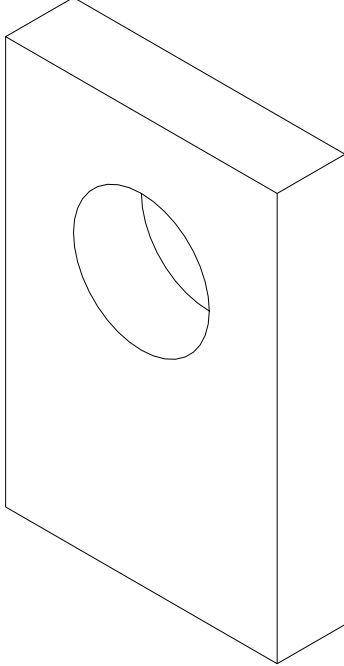
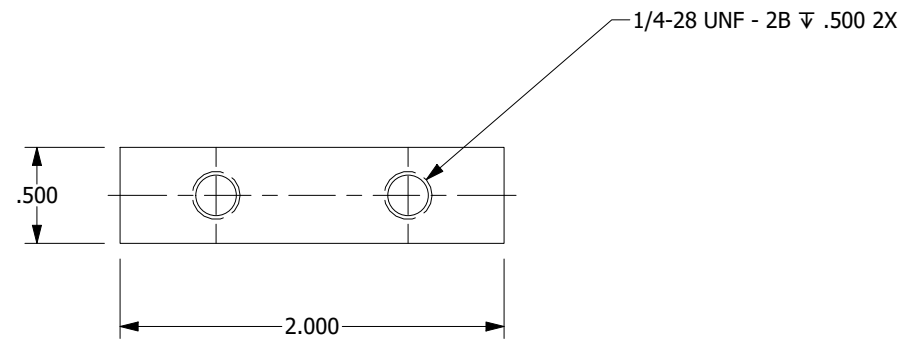
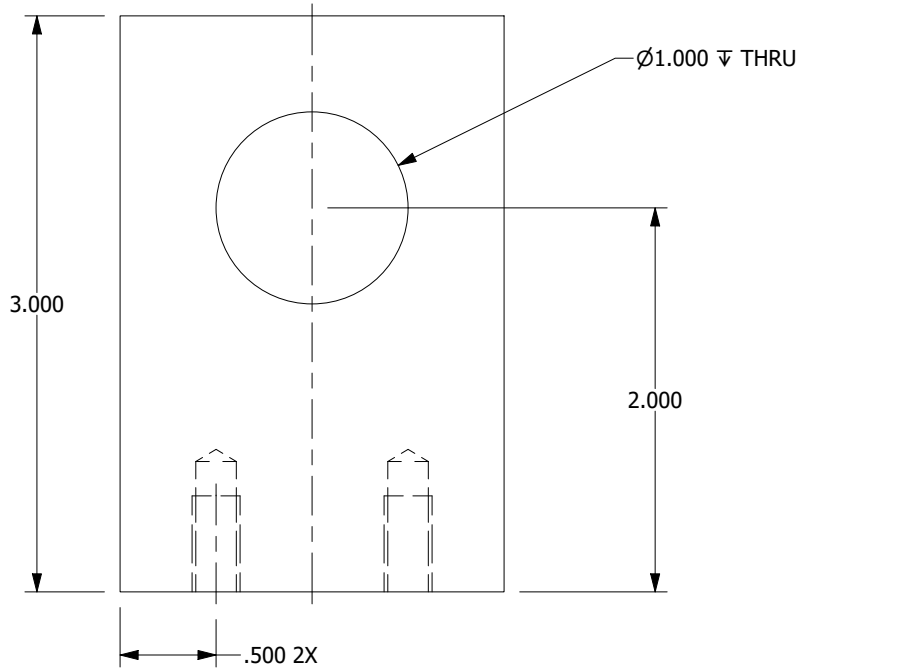
4

3

2

1

MATERIAL: ALUMINUM ALLOY, 6061, FLAT BAR, 2" X .5"



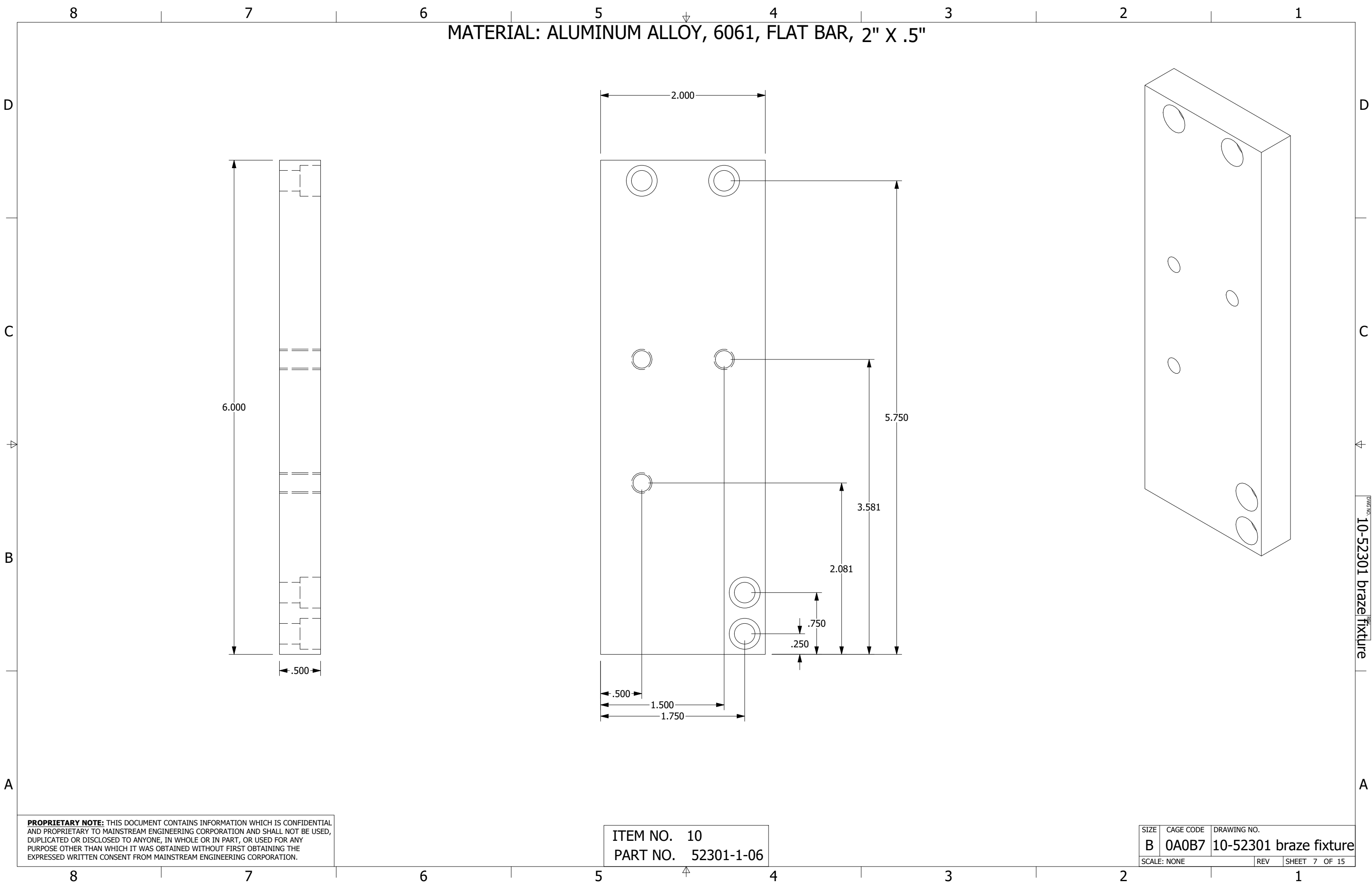
PROPRIETARY NOTE: THIS DOCUMENT CONTAINS INFORMATION WHICH IS CONFIDENTIAL AND PROPRIETARY TO MAINSTREAM ENGINEERING CORPORATION AND SHALL NOT BE USED, DUPLICATED OR DISCLOSED TO ANYONE, IN WHOLE OR IN PART, OR USED FOR ANY PURPOSE OTHER THAN WHICH IT WAS OBTAINED WITHOUT FIRST OBTAINING THE EXPRESSED WRITTEN CONSENT FROM MAINSTREAM ENGINEERING CORPORATION.

ITEM NO. 8
PART NO. 52301-1-05

SIZE	CAGE CODE	DRAWING NO.
B	0A0B7	10-52301 braze fixture
SCALE: NONE		REV SHEET 6 OF 15

DWG NO. 10-52301 braze fixture

MATERIAL: ALUMINUM ALLOY, 6061, FLAT BAR, 2" X .5"



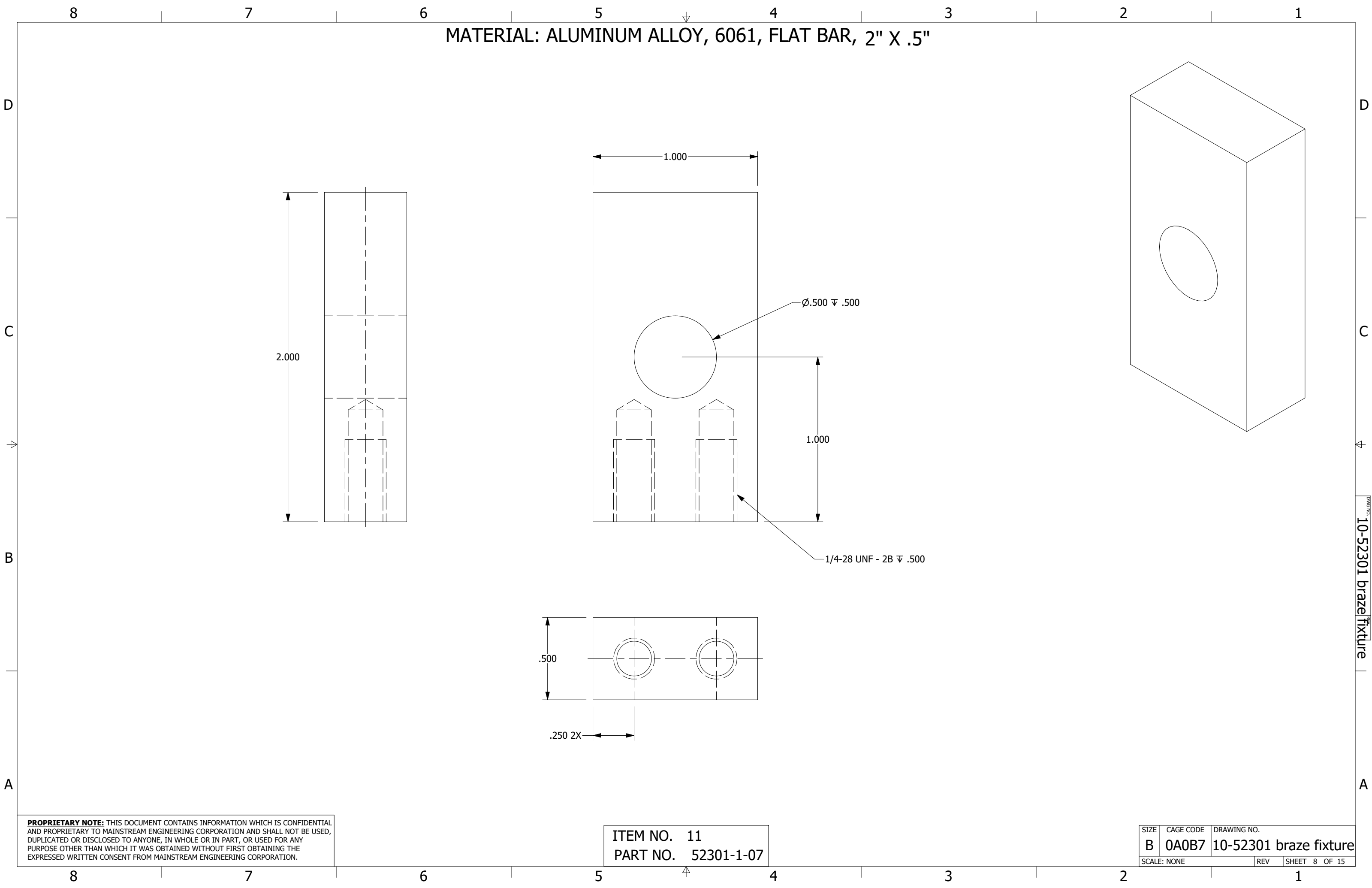
PROPRIETARY NOTE: THIS DOCUMENT CONTAINS INFORMATION WHICH IS CONFIDENTIAL AND PROPRIETARY TO MAINSTREAM ENGINEERING CORPORATION AND SHALL NOT BE USED, DUPLICATED OR DISCLOSED TO ANYONE, IN WHOLE OR IN PART, OR USED FOR ANY PURPOSE OTHER THAN WHICH IT WAS OBTAINED WITHOUT FIRST OBTAINING THE EXPRESSED WRITTEN CONSENT FROM MAINSTREAM ENGINEERING CORPORATION.

ITEM NO. 10
PART NO. 52301-1-06

SIZE	CAGE CODE	DRAWING NO.
B	0A0B7	10-52301 braze fixture
SCALE: NONE		REV SHEET 7 OF 15

DRAWING NO. 10-52301 braze fixture

MATERIAL: ALUMINUM ALLOY, 6061, FLAT BAR, 2" X .5"



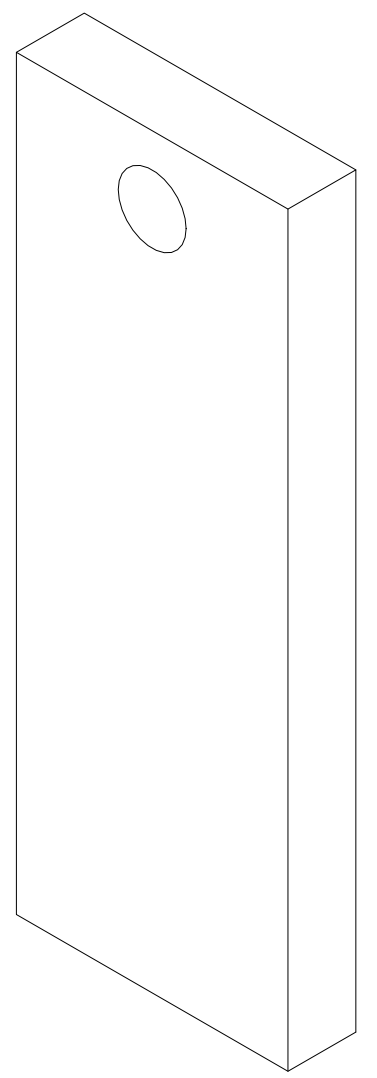
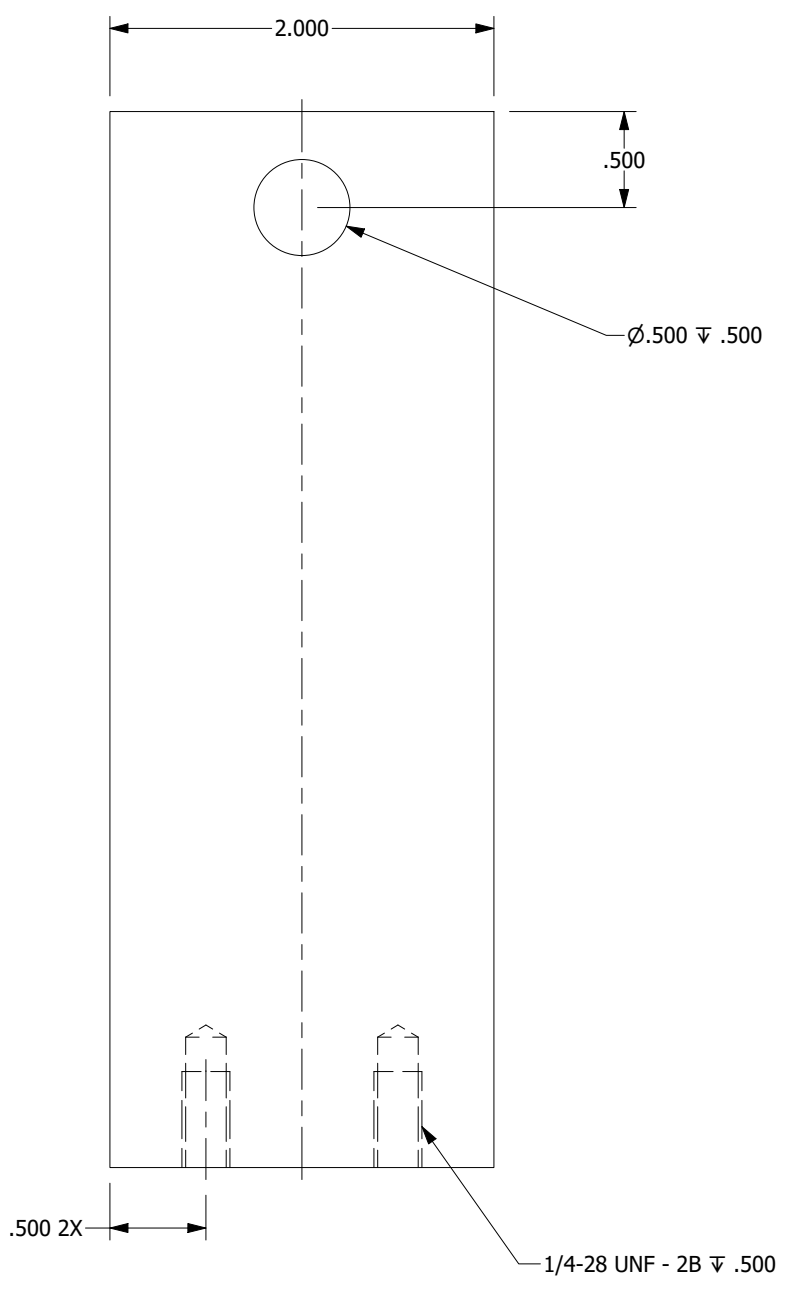
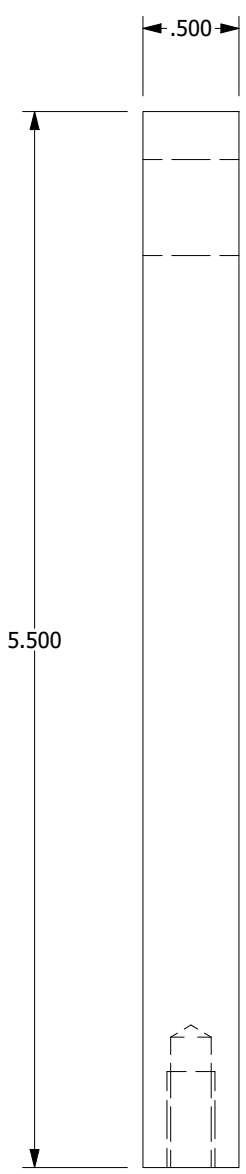
PROPRIETARY NOTE: THIS DOCUMENT CONTAINS INFORMATION WHICH IS CONFIDENTIAL AND PROPRIETARY TO MAINSTREAM ENGINEERING CORPORATION AND SHALL NOT BE USED, DUPLICATED OR DISCLOSED TO ANYONE, IN WHOLE OR IN PART, OR USED FOR ANY PURPOSE OTHER THAN WHICH IT WAS OBTAINED WITHOUT FIRST OBTAINING THE EXPRESSED WRITTEN CONSENT FROM MAINSTREAM ENGINEERING CORPORATION.

ITEM NO. 11
PART NO. 52301-1-07

SIZE	CAGE CODE	DRAWING NO.
B	0A0B7	10-52301 braze fixture
SCALE: NONE	REV	SHEET 8 OF 15

DRAWING NO. 10-52301 braze fixture

MATERIAL: ALUMINUM ALLOY, 6061, FLAT BAR, 2" X .5"



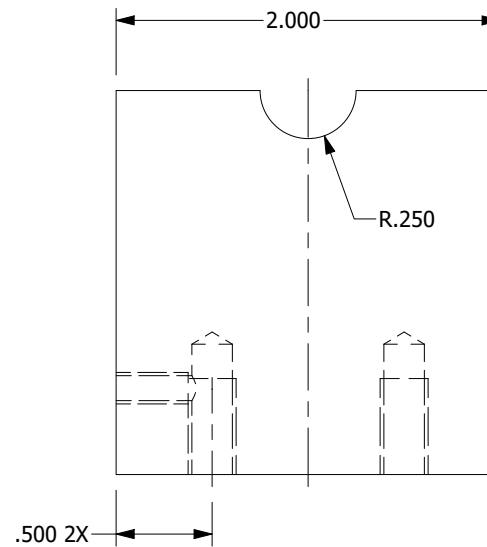
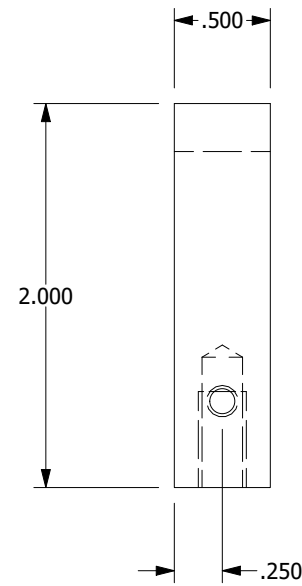
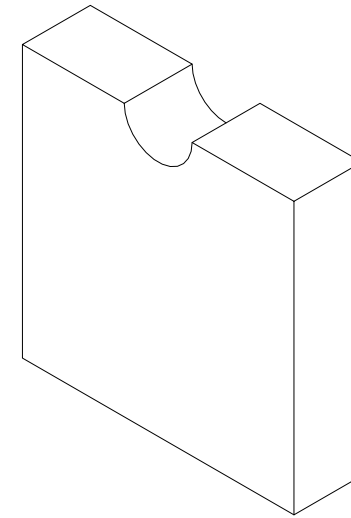
PROPRIETARY NOTE: THIS DOCUMENT CONTAINS INFORMATION WHICH IS CONFIDENTIAL AND PROPRIETARY TO MAINSTREAM ENGINEERING CORPORATION AND SHALL NOT BE USED, DUPLICATED OR DISCLOSED TO ANYONE, IN WHOLE OR IN PART, OR USED FOR ANY PURPOSE OTHER THAN WHICH IT WAS OBTAINED WITHOUT FIRST OBTAINING THE EXPRESSED WRITTEN CONSENT FROM MAINSTREAM ENGINEERING CORPORATION.

ITEM NO. 9
PART NO. 52301-1-08

SIZE	CAGE CODE	DRAWING NO.
B	0A0B7	10-52301 braze fixture
SCALE: NONE	REV	SHEET 9 OF 15

DRAWING NO. 10-52301 braze fixture

MATERIAL: ALUMINUM ALLOY, 6061, FLAT BAR, 2" X .5"



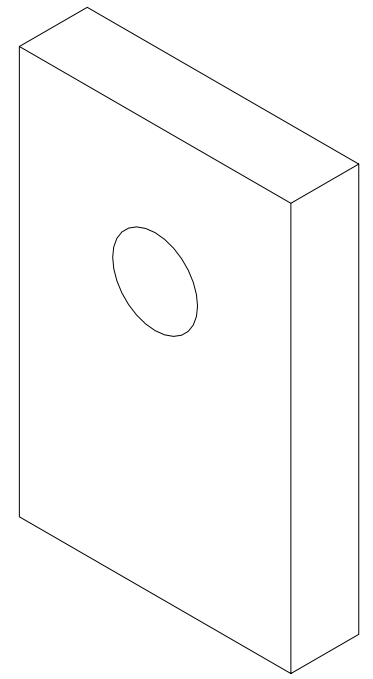
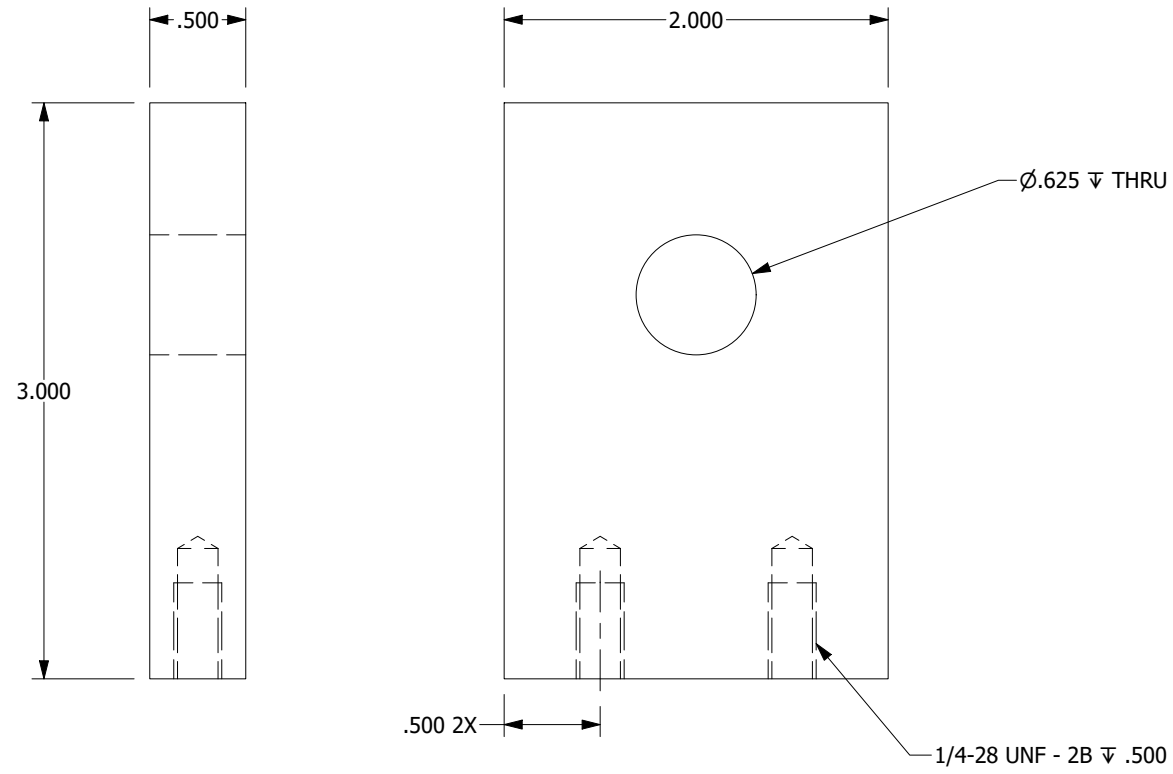
PROPRIETARY NOTE: THIS DOCUMENT CONTAINS INFORMATION WHICH IS CONFIDENTIAL AND PROPRIETARY TO MAINSTREAM ENGINEERING CORPORATION AND SHALL NOT BE USED, DUPLICATED OR DISCLOSED TO ANYONE, IN WHOLE OR IN PART, OR USED FOR ANY PURPOSE OTHER THAN WHICH IT WAS OBTAINED WITHOUT FIRST OBTAINING THE EXPRESSED WRITTEN CONSENT FROM MAINSTREAM ENGINEERING CORPORATION.

ITEM NO. 4
PART NO. 52301-1-09

SIZE	CAGE CODE	DRAWING NO.
B	0A0B7	10-52301 braze fixture
SCALE: NONE		REV SHEET 10 OF 15

DWG NO. 10-52301 braze fixture

MATERIAL: ALUMINUM ALLOY, 6061, FLAT BAR, 2" X .5"



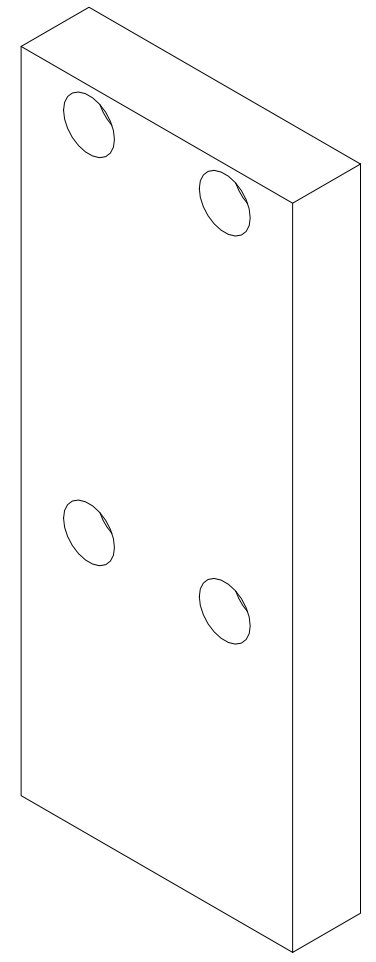
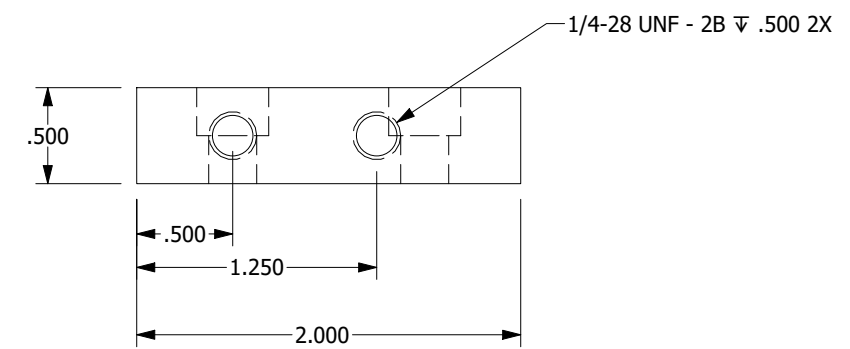
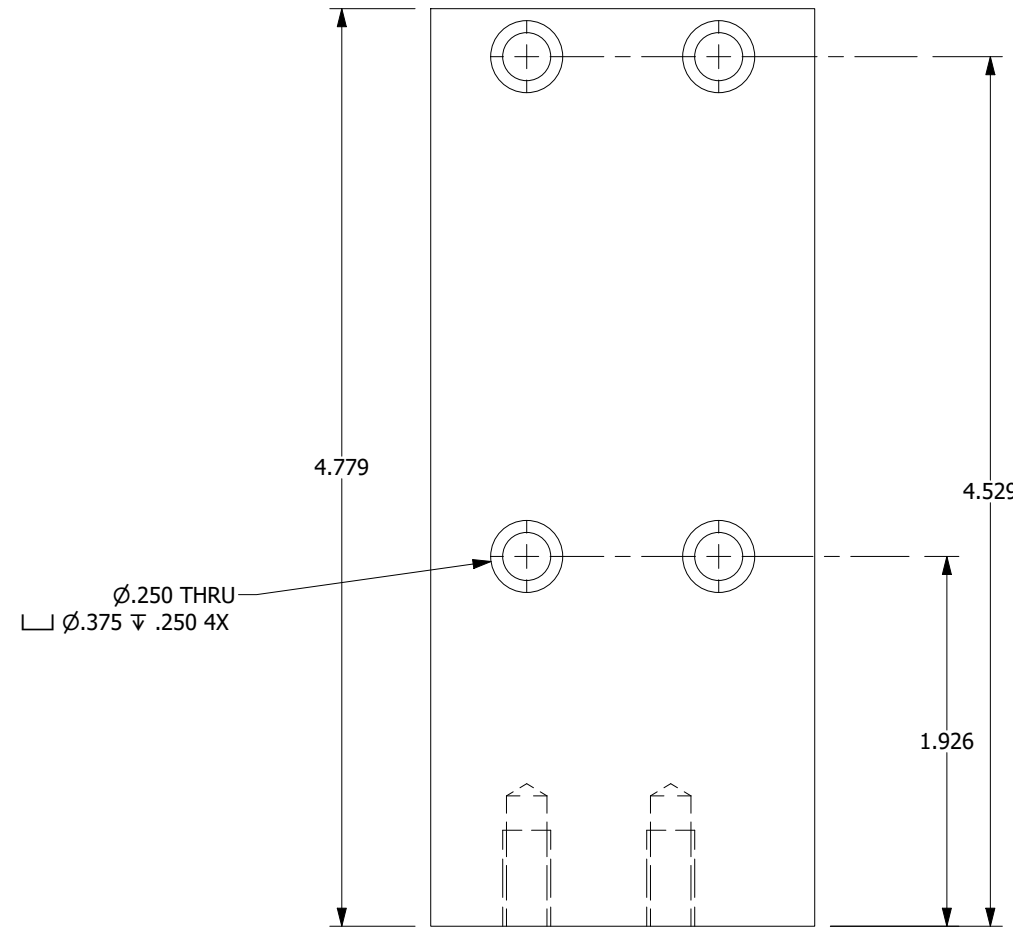
PROPRIETARY NOTE: THIS DOCUMENT CONTAINS INFORMATION WHICH IS CONFIDENTIAL AND PROPRIETARY TO MAINSTREAM ENGINEERING CORPORATION AND SHALL NOT BE USED, DUPLICATED OR DISCLOSED TO ANYONE, IN WHOLE OR IN PART, OR USED FOR ANY PURPOSE OTHER THAN WHICH IT WAS OBTAINED WITHOUT FIRST OBTAINING THE EXPRESSED WRITTEN CONSENT FROM MAINSTREAM ENGINEERING CORPORATION.

ITEM NO. 2
PART NO. 52301-1-10

SIZE	CAGE CODE	DRAWING NO.
B	0A0B7	10-52301 braze fixture
SCALE: NONE		REV SHEET 11 OF 15

DRAWING NO. 10-52301 braze fixture

MATERIAL: ALUMINUM ALLOY, 6061, FLAT BAR, 2" X .5"



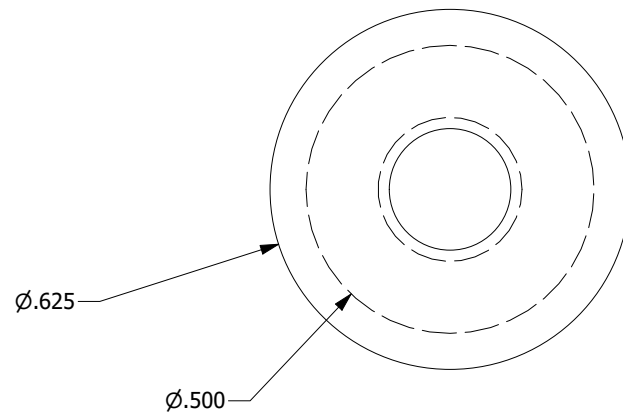
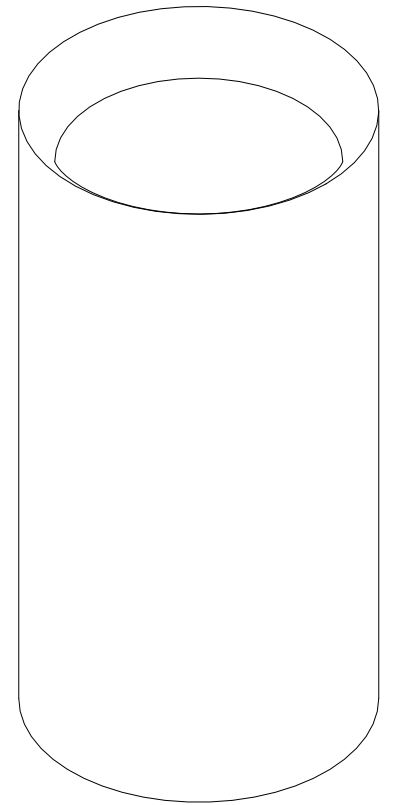
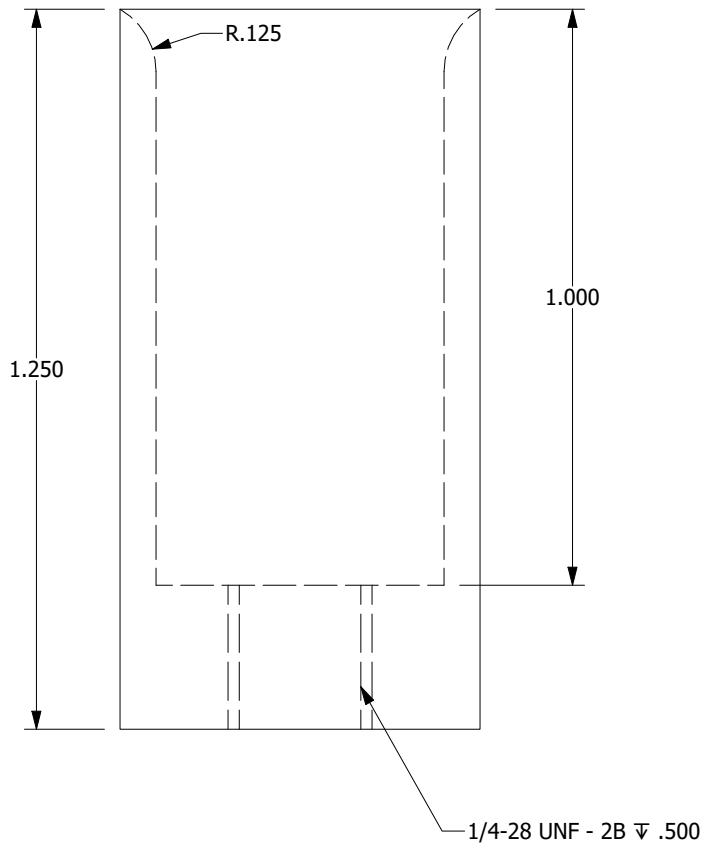
PROPRIETARY NOTE: THIS DOCUMENT CONTAINS INFORMATION WHICH IS CONFIDENTIAL AND PROPRIETARY TO MAINSTREAM ENGINEERING CORPORATION AND SHALL NOT BE USED, DUPLICATED OR DISCLOSED TO ANYONE, IN WHOLE OR IN PART, OR USED FOR ANY PURPOSE OTHER THAN WHICH IT WAS OBTAINED WITHOUT FIRST OBTAINING THE EXPRESSED WRITTEN CONSENT FROM MAINSTREAM ENGINEERING CORPORATION.

ITEM NO. 3
PART NO. 52301-1-11

SIZE	CAGE CODE	DRAWING NO.
B	0A0B7	10-52301 braze fixture
SCALE: NONE	REV	SHEET 12 OF 15

DWG NO. 10-52301 braze fixture

MATERIAL: ALUMINUM ALLOY, 6061, FLAT BAR, 2" X .5"



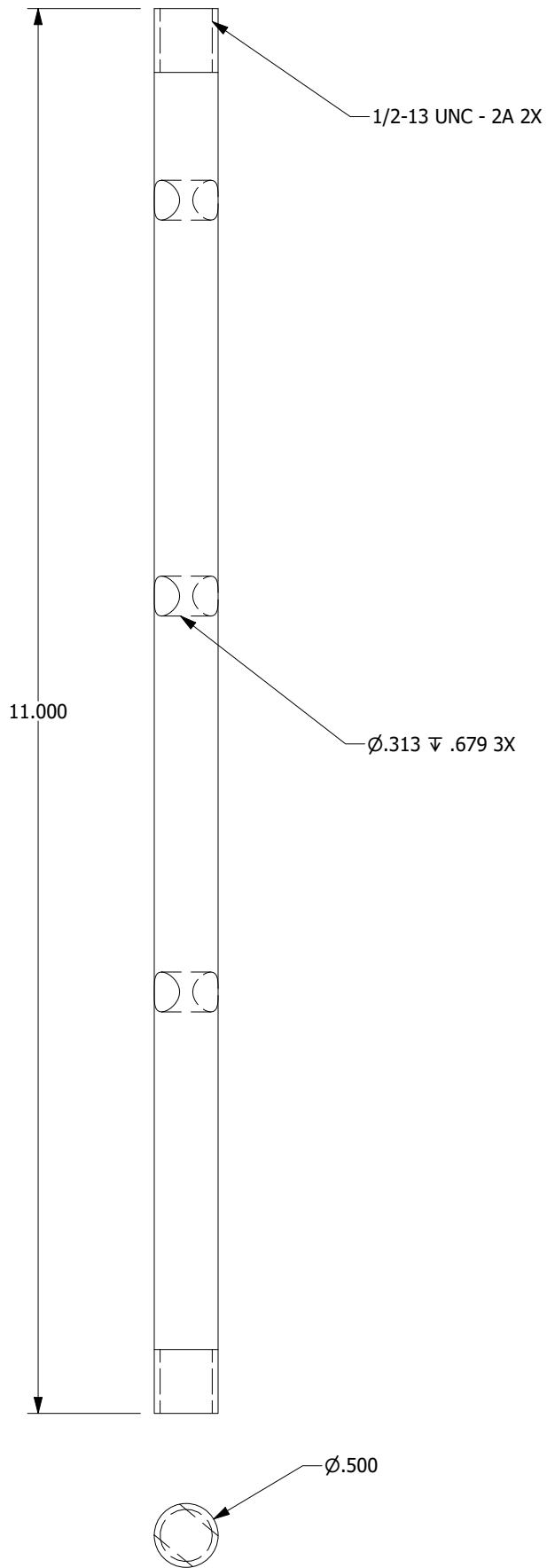
PROPRIETARY NOTE: THIS DOCUMENT CONTAINS INFORMATION WHICH IS CONFIDENTIAL AND PROPRIETARY TO MAINSTREAM ENGINEERING CORPORATION AND SHALL NOT BE USED, DUPLICATED OR DISCLOSED TO ANYONE, IN WHOLE OR IN PART, OR USED FOR ANY PURPOSE OTHER THAN WHICH IT WAS OBTAINED WITHOUT FIRST OBTAINING THE EXPRESSED WRITTEN CONSENT FROM MAINSTREAM ENGINEERING CORPORATION.

ITEM NO. 14
PART NO. 52301-1-12

SIZE	CAGE CODE	DRAWING NO.
B	0A0B7	10-52301 braze fixture
SCALE: NONE		REV SHEET 13 OF 15

DWG NO. 10-52301 braze fixture

MATERIAL: ALUMINUM ALLOY, 6061, FLAT BAR, 2" X .5"



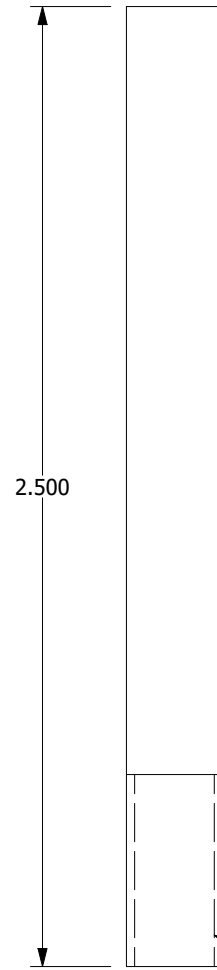
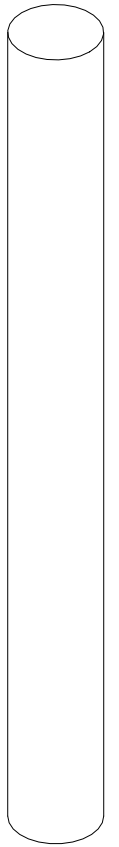
PROPRIETARY NOTE: THIS DOCUMENT CONTAINS INFORMATION WHICH IS CONFIDENTIAL AND PROPRIETARY TO MAINSTREAM ENGINEERING CORPORATION AND SHALL NOT BE USED, DUPLICATED OR DISCLOSED TO ANYONE, IN WHOLE OR IN PART, OR USED FOR ANY PURPOSE OTHER THAN WHICH IT WAS OBTAINED WITHOUT FIRST OBTAINING THE EXPRESSED WRITTEN CONSENT FROM MAINSTREAM ENGINEERING CORPORATION.

ITEM NO. 14
PART NO. 52301-1-13

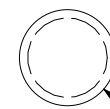
SIZE	CAGE CODE	DRAWING NO.
B	0A0B7	10-52301 braze fixture
SCALE: NONE		REV SHEET 14 OF 15

DWG NO. 10-52301 braze fixture

MATERIAL: ALUMINUM ALLOY, 6061, FLAT BAR, 2" X .5"



1/4-28 UNF - 2A



Ø.250

PROPRIETARY NOTE: THIS DOCUMENT CONTAINS INFORMATION WHICH IS CONFIDENTIAL AND PROPRIETARY TO MAINSTREAM ENGINEERING CORPORATION AND SHALL NOT BE USED, DUPLICATED OR DISCLOSED TO ANYONE, IN WHOLE OR IN PART, OR USED FOR ANY PURPOSE OTHER THAN WHICH IT WAS OBTAINED WITHOUT FIRST OBTAINING THE EXPRESSED WRITTEN CONSENT FROM MAINSTREAM ENGINEERING CORPORATION.

ITEM NO. 16
PART NO. 52301-1-14

SIZE	CAGE CODE	DRAWING NO.
B	0A0B7	10-52301 braze fixture
SCALE: NONE		REV SHEET 15 OF 15

DWG NO. 10-52301 braze fixture