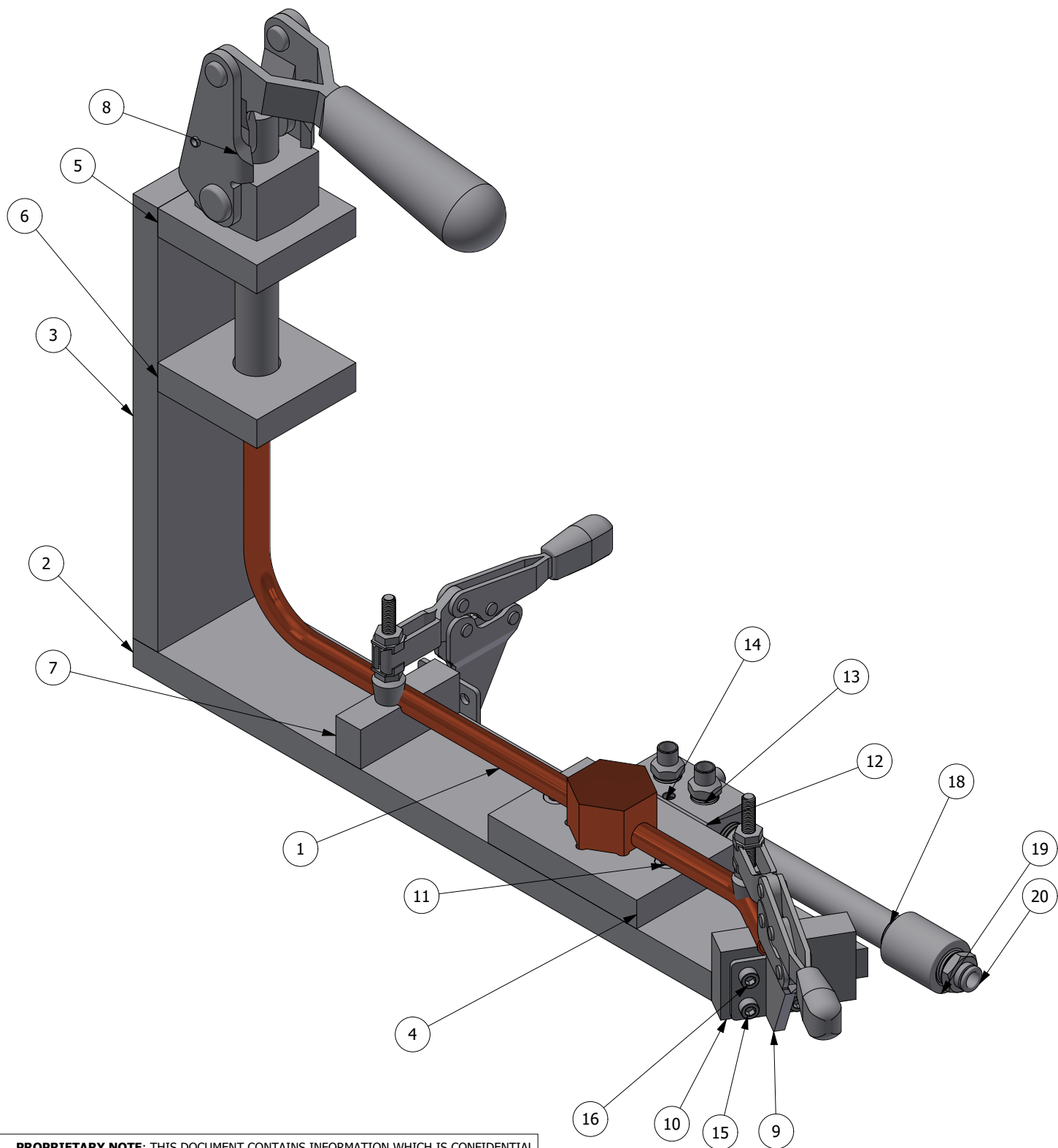


NOTES:

1. INTERPRET THIS DRAWING IN ACCORDANCE WITH ASME Y14.100.
2. REMOVE ALL BURRS AND SHARP EDGES.

REVISIONS				
REV	ZONE	DESCRIPTION	DATE	APPROVED
A				GSC



ITEM	PART NUMBER	QTY	NOMENCLATURE OR DESCRIPTION	SPECIFICATION
20	51235K108	1	Push-to-Connect Tube Fitting with Universal Thread	
19	4464K352	1	304 Stainless Steel Threaded Pipe Fitting	
18	44615K462	1	Standard-Wall Steel Pipe Nipple	
17	44605K232	1	Low-Pressure Pipe Fitting	
16	91274A056	2	Zinc-Aluminum-Coated Alloy Steel Socket Head Screw	
15	91274A064	2	Zinc-Aluminum-Coated Alloy Steel Socket Head Screw	
14	91274A076	2	Zinc-Aluminum-Coated Alloy Steel Socket Head Screw	
13	5520K172	2	Solder-Connect Fitting for Copper Tubing	
12	5469K101	1	Anodized Aluminum Right-Angle Flow Manifold	
11	90128A363	10	Zinc-Plated Alloy Steel Socket Head Screw	
10	52300-1-01	1	angle pipe holder	
9	2423N11	2	Side-Mount Hold-Down Toggle Clamp	
8	5093A64	1	Push Pull Toggle Clamp	
7	52300-1-04	1	pipe holder	
6	52300-1-05	1	pipe locator	
5	52300-1-07	1	toggle clamp mount	
4	52300-1-03	1	TXV valve holder	
3	52300-1-06	1	riser	
2	52300-1-02	1	base	
1	10-52300 placeholder pipe	1	Copper Tube, .375 OD	

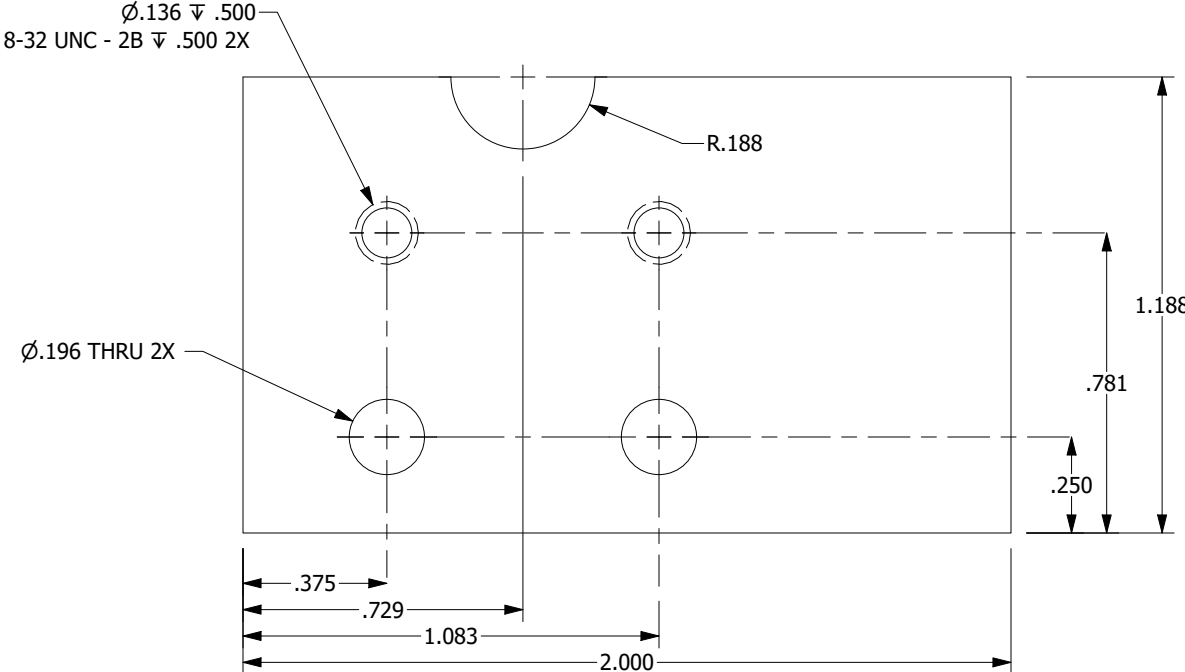
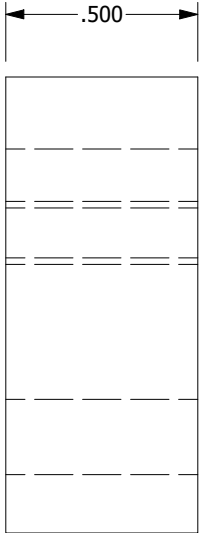
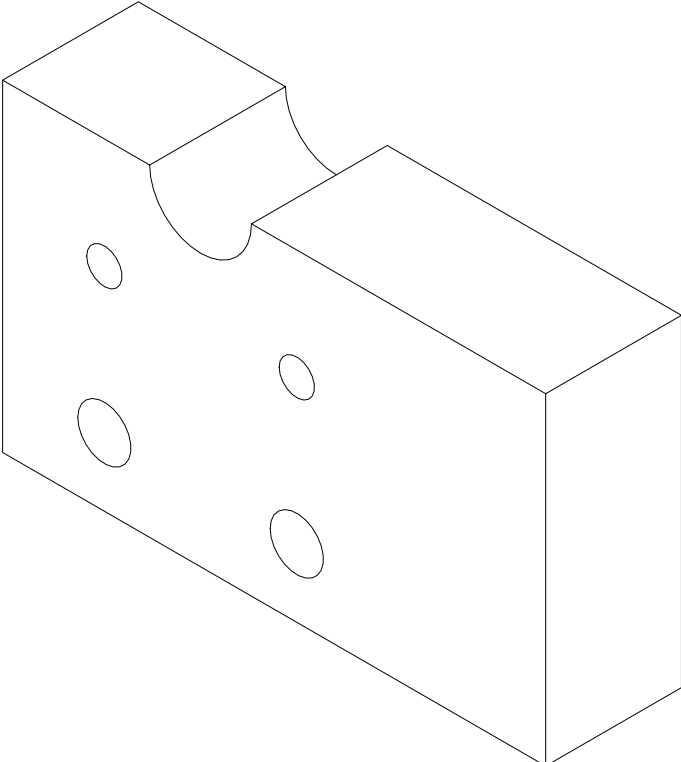
PARTS LIST

<p>QUALITY SYMBOLS</p> <p> DENOTES CRITICAL INSPECTION</p> <p> NEXT ASSY USED ON APPLICATION</p>	<p>UNLESS OTHERWISE SPECIFIED: DIMENSIONS ARE IN INCHES</p> <p>TOLERANCES:</p> <p>ANGLES X ± 1'</p> <p>1 PLACE DIM. X ± .1</p> <p>2 PLACE DIM. X ± .01</p> <p>3 PLACE DIM. X ± .005</p>	<p>CONTRACT NO.</p>	
		<p>DATE</p> <p>B. VILLANUEVA 11/3/2023</p> <p>CHECKED DATE</p>	
<p>MECHANICAL</p> <p>B. VILLANUEVA 11/3/2023</p> <p>ELECTRICAL DATE</p>	<p>OPERATIONS</p> <p>B. BLACH DATE</p> <p>APPROVED</p> <p>G. COLE DATE</p>	<p>SIZE</p> <p>B 0A0B7</p>	<p>DRAWING NO.</p> <p>10-52300 braze fixture</p>
<p>THIRD ANGLE PROJECTION</p>		<p>SCALE: NONE</p>	<p>UNIT WT.</p>
		<p>REV</p>	<p>SHEET 1 OF 8</p>

**PROPRIETARY NOTE:** THIS DOCUMENT CONTAINS INFORMATION WHICH IS CONFIDENTIAL AND PROPRIETARY TO MAINSTREAM ENGINEERING CORPORATION AND SHALL NOT BE USED, DUPLICATED OR DISCLOSED TO ANYONE, IN WHOLE OR IN PART, OR USED FOR ANY PURPOSE OTHER THAN WHICH IT WAS OBTAINED WITHOUT FIRST OBTAINING THE EXPRESSED WRITTEN CONSENT FROM MAINSTREAM ENGINEERING CORPORATION.

10-52300 braze fixture

MATERIAL: ALUMINUM ALLOY, 6061, FLAT BAR, 2" X .5"



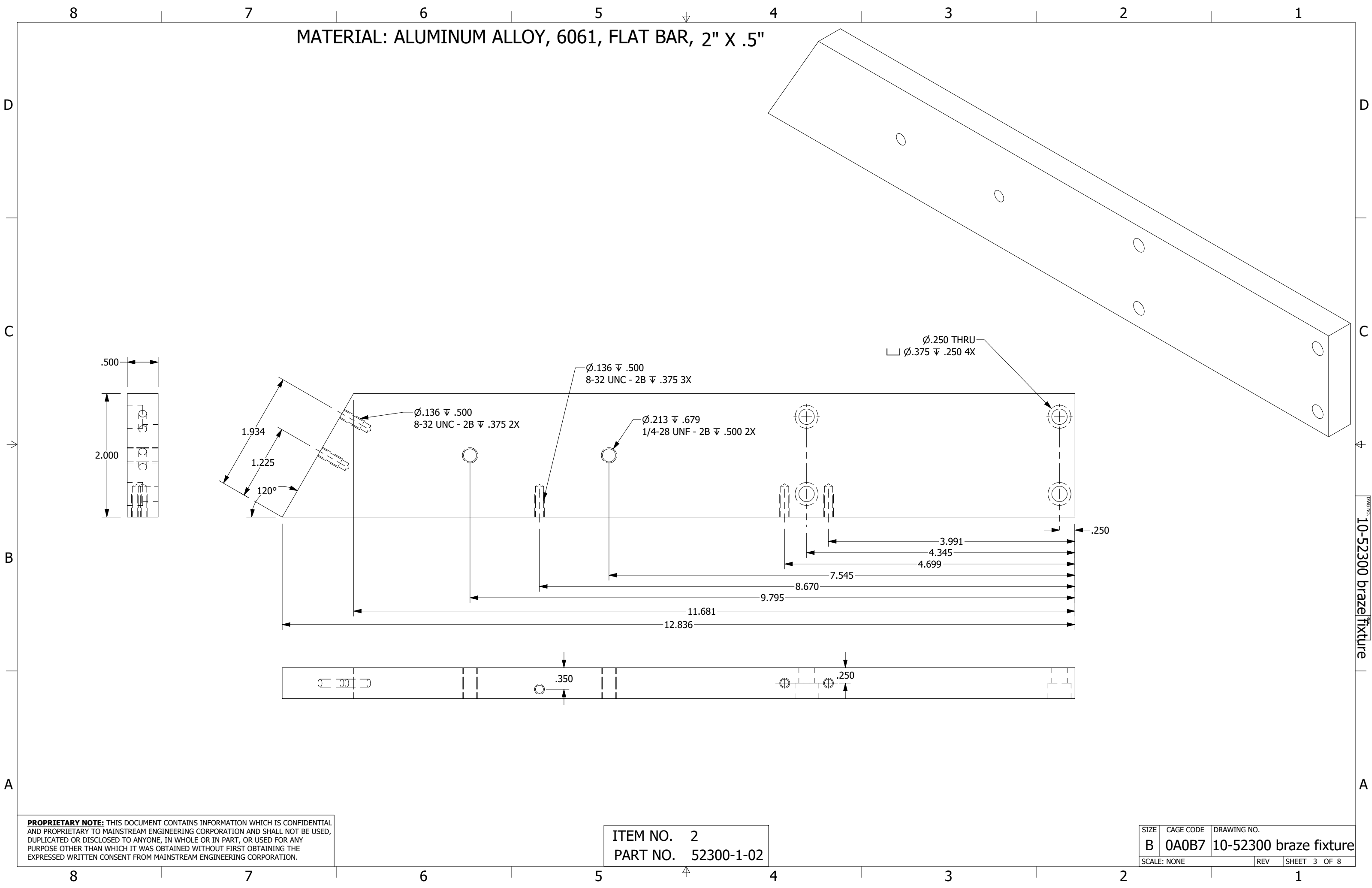
DWG NO. 10-52300 braze fixture

PROPRIETARY NOTE: THIS DOCUMENT CONTAINS INFORMATION WHICH IS CONFIDENTIAL AND PROPRIETARY TO MAINSTREAM ENGINEERING CORPORATION AND SHALL NOT BE USED, DUPLICATED OR DISCLOSED TO ANYONE, IN WHOLE OR IN PART, OR USED FOR ANY PURPOSE OTHER THAN WHICH IT WAS OBTAINED WITHOUT FIRST OBTAINING THE EXPRESSED WRITTEN CONSENT FROM MAINSTREAM ENGINEERING CORPORATION.

ITEM NO. 10  
PART NO. 52300-1-01

SIZE	CAGE CODE	DRAWING NO.
B	0A0B7	10-52300 braze fixture
SCALE: NONE	REV	SHEET 2 OF 8

MATERIAL: ALUMINUM ALLOY, 6061, FLAT BAR, 2" X .5"



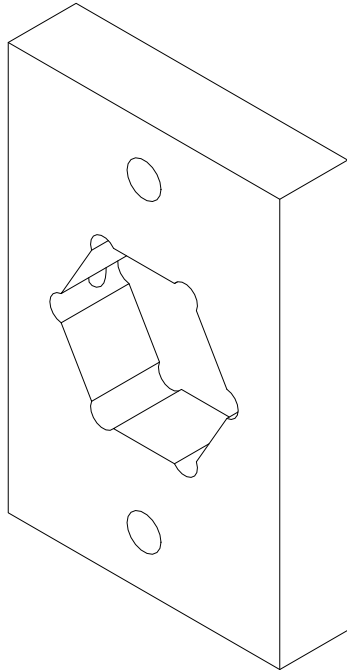
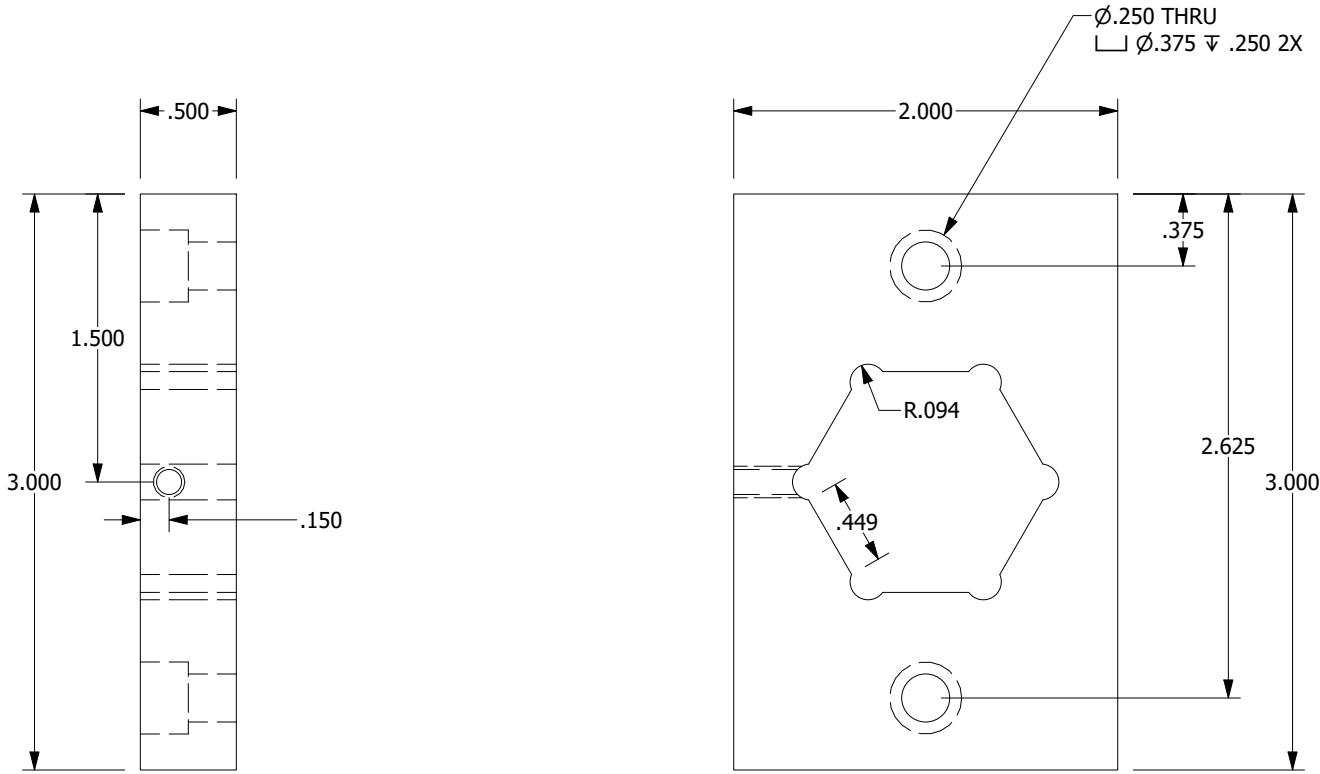
DRAWING NO. 10-52300 braze fixture

**PROPRIETARY NOTE:** THIS DOCUMENT CONTAINS INFORMATION WHICH IS CONFIDENTIAL AND PROPRIETARY TO MAINSTREAM ENGINEERING CORPORATION AND SHALL NOT BE USED, DUPLICATED OR DISCLOSED TO ANYONE, IN WHOLE OR IN PART, OR USED FOR ANY PURPOSE OTHER THAN WHICH IT WAS OBTAINED WITHOUT FIRST OBTAINING THE EXPRESSED WRITTEN CONSENT FROM MAINSTREAM ENGINEERING CORPORATION.

ITEM NO. 2  
PART NO. 52300-1-02

SIZE	CAGE CODE	DRAWING NO.
B	0A0B7	10-52300 braze fixture
SCALE: NONE	REV	SHEET 3 OF 8

MATERIAL: ALUMINUM ALLOY, 6061, FLAT BAR, 2" X .5"



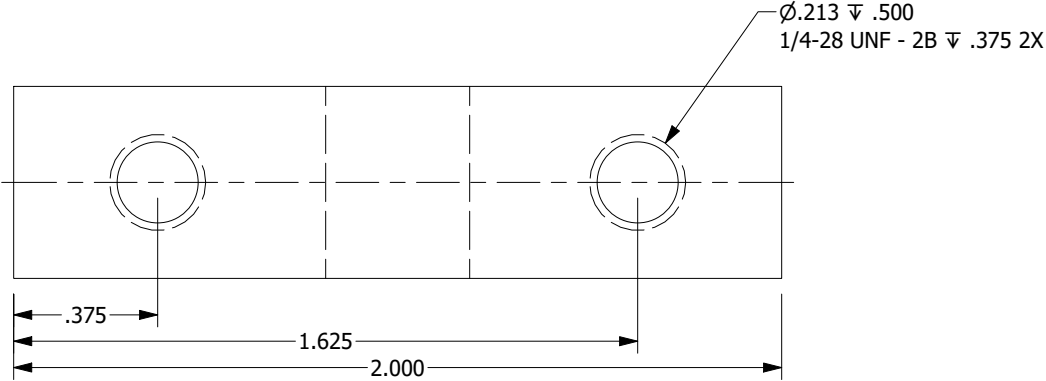
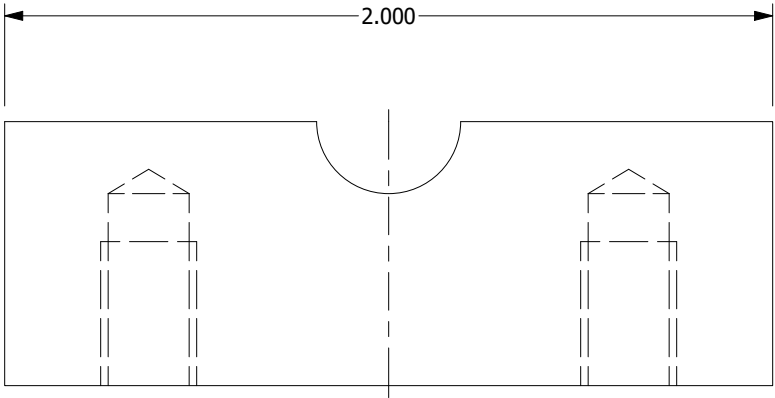
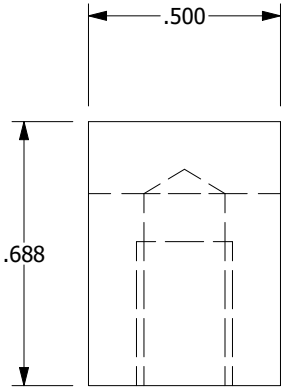
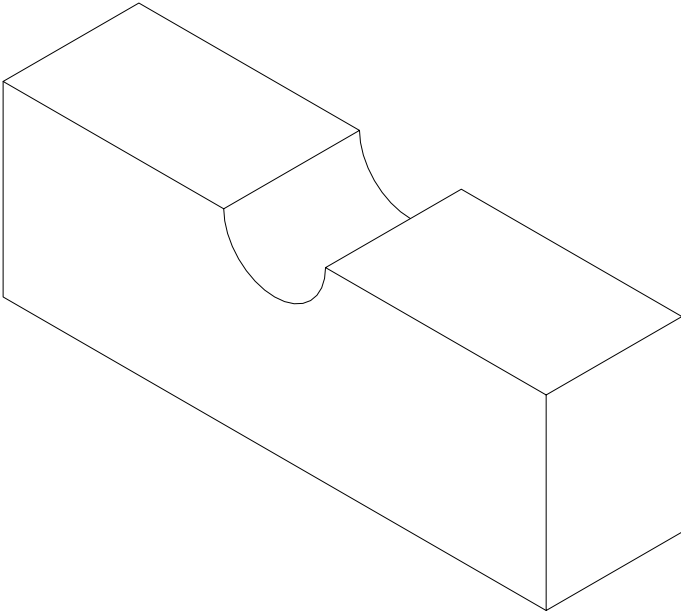
**PROPRIETARY NOTE:** THIS DOCUMENT CONTAINS INFORMATION WHICH IS CONFIDENTIAL AND PROPRIETARY TO MAINSTREAM ENGINEERING CORPORATION AND SHALL NOT BE USED, DUPLICATED OR DISCLOSED TO ANYONE, IN WHOLE OR IN PART, OR USED FOR ANY PURPOSE OTHER THAN WHICH IT WAS OBTAINED WITHOUT FIRST OBTAINING THE EXPRESSED WRITTEN CONSENT FROM MAINSTREAM ENGINEERING CORPORATION.

ITEM NO. 4  
PART NO. 52300-1-03

SIZE	CAGE CODE	DRAWING NO.
B	0A0B7	10-52300 braze fixture
SCALE: NONE		REV SHEET 4 OF 8

DRAWING NO. 10-52300 braze fixture

MATERIAL: ALUMINUM ALLOY, 6061, FLAT BAR, 2" X .5"



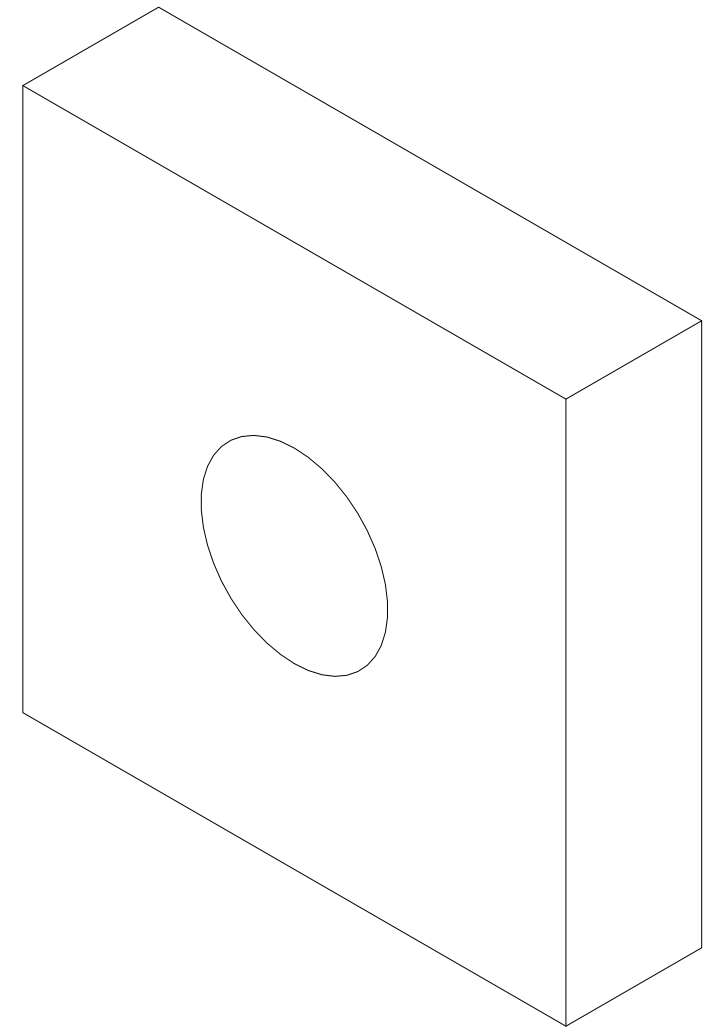
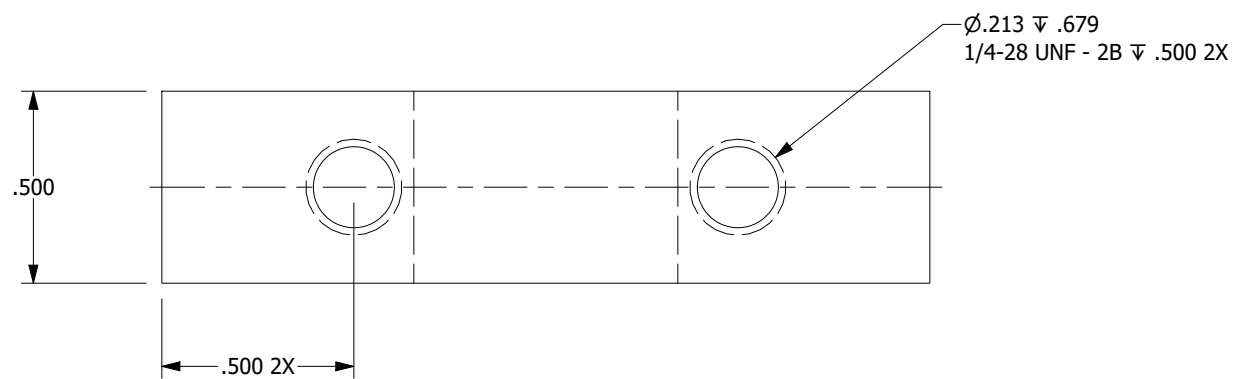
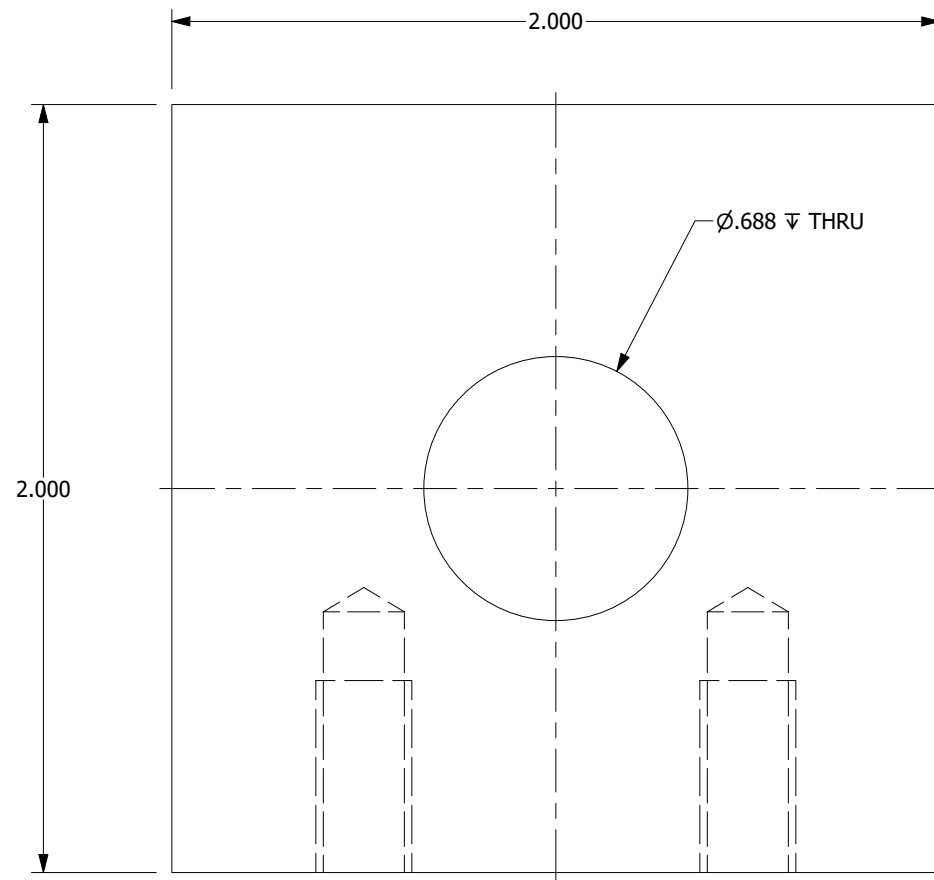
DRAWING NO. 10-52300 braze fixture

**PROPRIETARY NOTE:** THIS DOCUMENT CONTAINS INFORMATION WHICH IS CONFIDENTIAL AND PROPRIETARY TO MAINSTREAM ENGINEERING CORPORATION AND SHALL NOT BE USED, DUPLICATED OR DISCLOSED TO ANYONE, IN WHOLE OR IN PART, OR USED FOR ANY PURPOSE OTHER THAN WHICH IT WAS OBTAINED WITHOUT FIRST OBTAINING THE EXPRESSED WRITTEN CONSENT FROM MAINSTREAM ENGINEERING CORPORATION.

ITEM NO. 7  
PART NO. 52300-1-04

SIZE	CAGE CODE	DRAWING NO.
B	0A0B7	10-52300 braze fixture
SCALE: NONE	REV	SHEET 5 OF 8

MATERIAL: ALUMINUM ALLOY, 6061, FLAT BAR, 2" X .5"



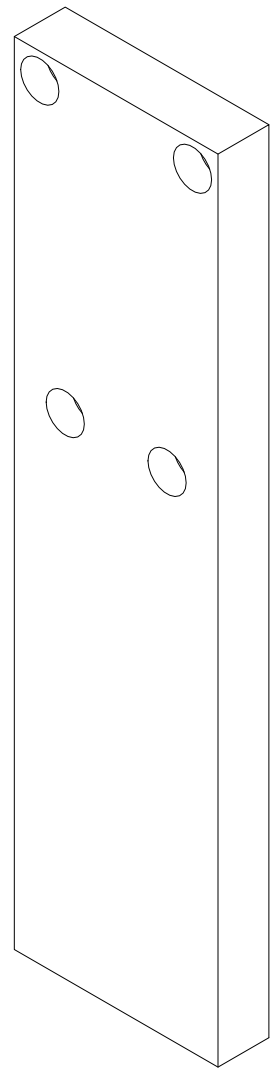
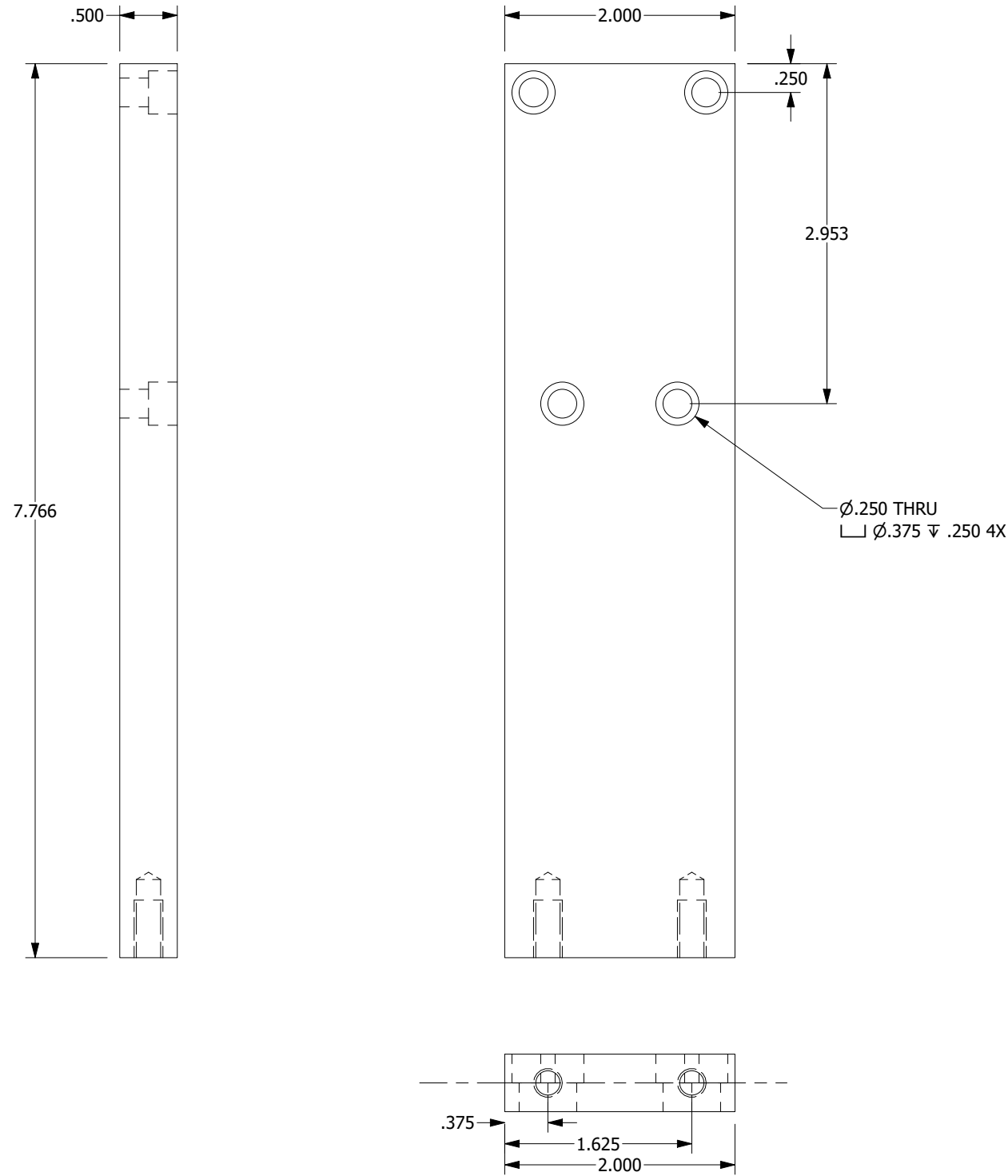
**PROPRIETARY NOTE:** THIS DOCUMENT CONTAINS INFORMATION WHICH IS CONFIDENTIAL AND PROPRIETARY TO MAINSTREAM ENGINEERING CORPORATION AND SHALL NOT BE USED, DUPLICATED OR DISCLOSED TO ANYONE, IN WHOLE OR IN PART, OR USED FOR ANY PURPOSE OTHER THAN WHICH IT WAS OBTAINED WITHOUT FIRST OBTAINING THE EXPRESSED WRITTEN CONSENT FROM MAINSTREAM ENGINEERING CORPORATION.

ITEM NO. 6  
PART NO. 52300-1-05

SIZE	CAGE CODE	DRAWING NO.
B	0A0B7	10-52300 braze fixture
SCALE: NONE	REV	SHEET 6 OF 8

DWG NO. 10-52300 braze fixture

MATERIAL: ALUMINUM ALLOY, 6061, FLAT BAR, 2" X .5"



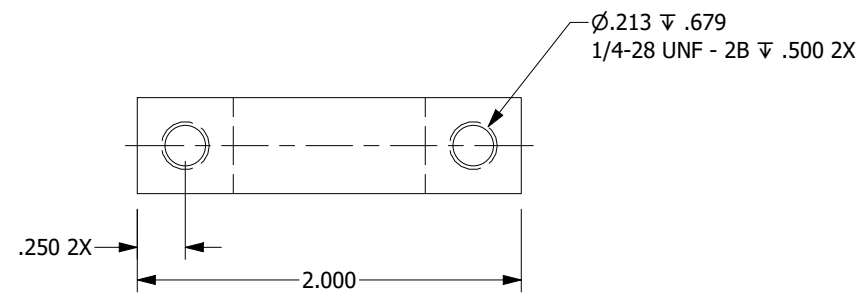
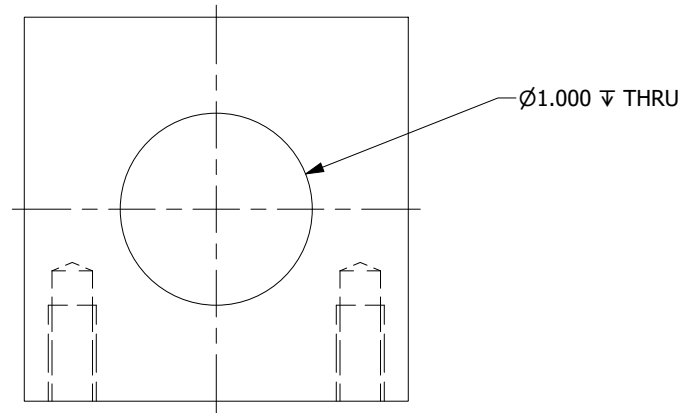
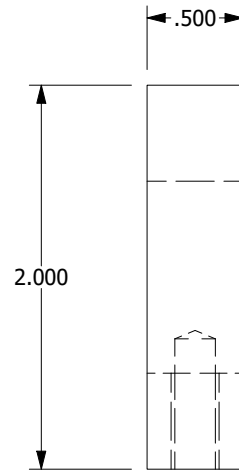
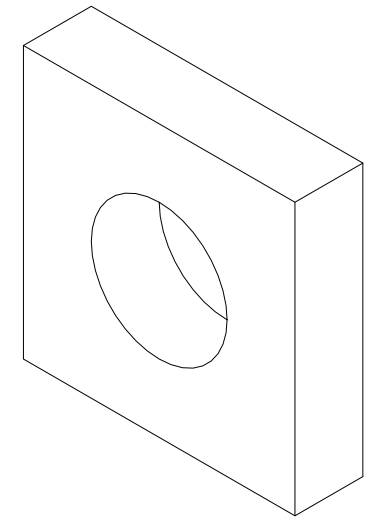
**PROPRIETARY NOTE:** THIS DOCUMENT CONTAINS INFORMATION WHICH IS CONFIDENTIAL AND PROPRIETARY TO MAINSTREAM ENGINEERING CORPORATION AND SHALL NOT BE USED, DUPLICATED OR DISCLOSED TO ANYONE, IN WHOLE OR IN PART, OR USED FOR ANY PURPOSE OTHER THAN WHICH IT WAS OBTAINED WITHOUT FIRST OBTAINING THE EXPRESSED WRITTEN CONSENT FROM MAINSTREAM ENGINEERING CORPORATION.

ITEM NO. 3  
PART NO. 52300-1-06

SIZE	CAGE CODE	DRAWING NO.
B	0A0B7	10-52300 braze fixture
SCALE: NONE	REV	SHEET 7 OF 8

DWG NO. 10-52300 braze fixture

MATERIAL: ALUMINUM ALLOY, 6061, FLAT BAR, 2" X .5"



**PROPRIETARY NOTE:** THIS DOCUMENT CONTAINS INFORMATION WHICH IS CONFIDENTIAL AND PROPRIETARY TO MAINSTREAM ENGINEERING CORPORATION AND SHALL NOT BE USED, DUPLICATED OR DISCLOSED TO ANYONE, IN WHOLE OR IN PART, OR USED FOR ANY PURPOSE OTHER THAN WHICH IT WAS OBTAINED WITHOUT FIRST OBTAINING THE EXPRESSED WRITTEN CONSENT FROM MAINSTREAM ENGINEERING CORPORATION.

ITEM NO. 5  
PART NO. 52300-1-07

SIZE	CAGE CODE	DRAWING NO.
B	0A0B7	10-52300 braze fixture
SCALE: NONE		REV SHEET 8 OF 8

DWG NO. 10-52300 braze fixture