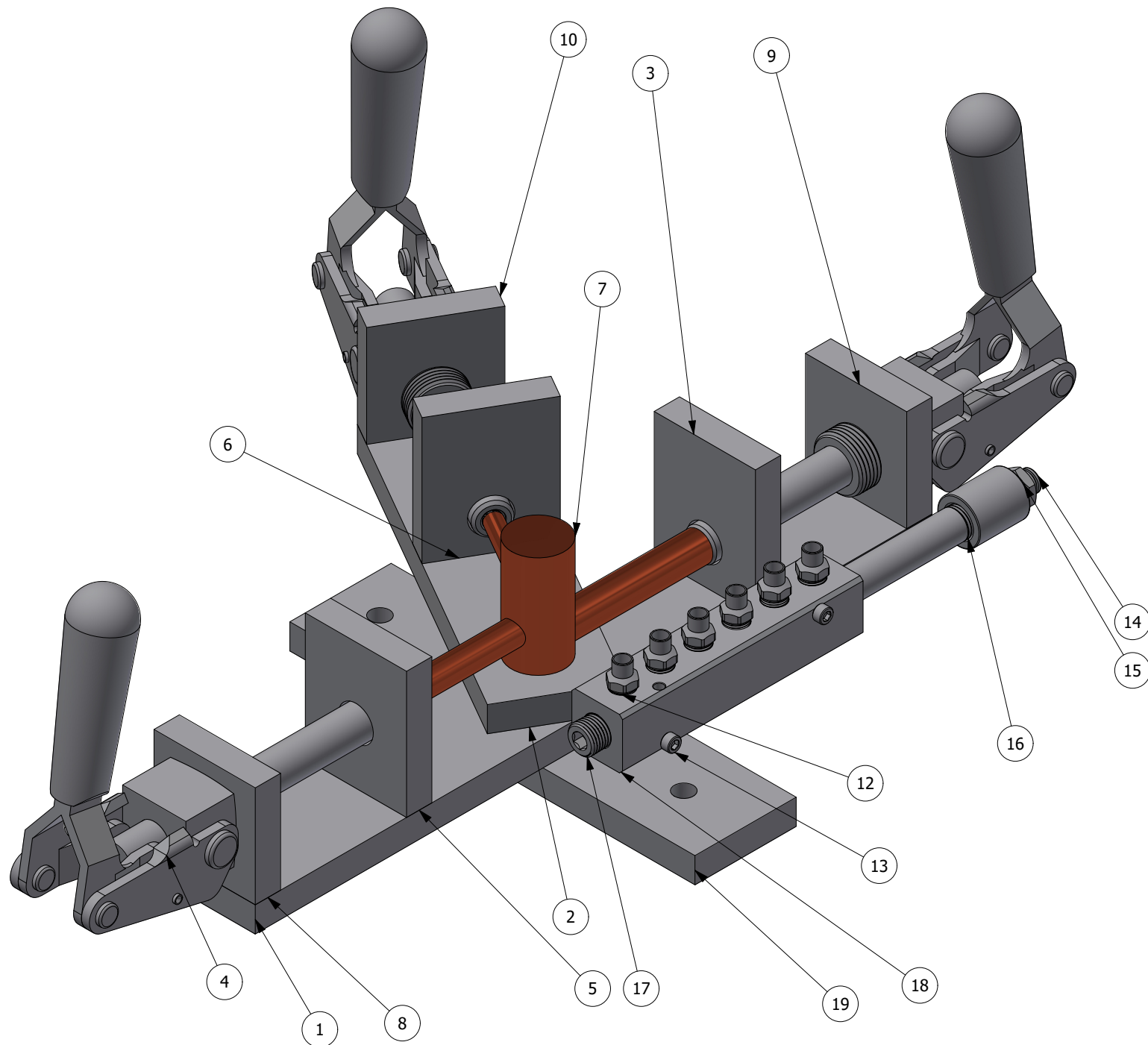


NOTES:

1. INTERPRET THIS DRAWING IN ACCORDANCE WITH ASME Y14.100.
2. REMOVE ALL BURRS AND SHARP EDGES.

REVISIONS				
REV	ZONE	DESCRIPTION	DATE	APPROVED
A				GSC



ITEM	PART NUMBER	QTY	NOMENCLATURE OR DESCRIPTION	SPECIFICATION
19	52028-1-01	1	base adapter	
18	5469K151	1	Anodized Aluminum Right-Angle Flow Manifold	
17	44605K232	1	Low-Pressure Pipe Fitting	
16	44615K452	1	Standard-Wall Steel Pipe Nipple	
15	4464K352	1	304 Stainless Steel Threaded Pipe Fitting	
14	51235K108	1	Push-to-Connect Tube Fitting with Universal Thread	
13	90128A201	2	Zinc-Plated Alloy Steel Socket Head Screw	
12	5520K172	6	Solder-Connect Fitting for Copper Tubing	
11	90128A363	14	Zinc-Plated Alloy Steel Socket Head Screw	
10	52028-1-05	1	high toggle clamp mount	
9	52028-1-04	1	low toggle clamp mount	
8	52028-1-03	1	middle toggle clamp mount	
7	10-52028 placeholder pipe	1	TXV valve	
6	52028-1-08	1	high pipe locator mount	
5	52028-1-07	1	middle pipe locator mount	
4	5093A64	3	Push Pull Toggle Clamp	
3	52028-1-09	1	low pipe locator mount	
2	52028-1-06	1	angle base	
1	52028-1-02	1	Base	

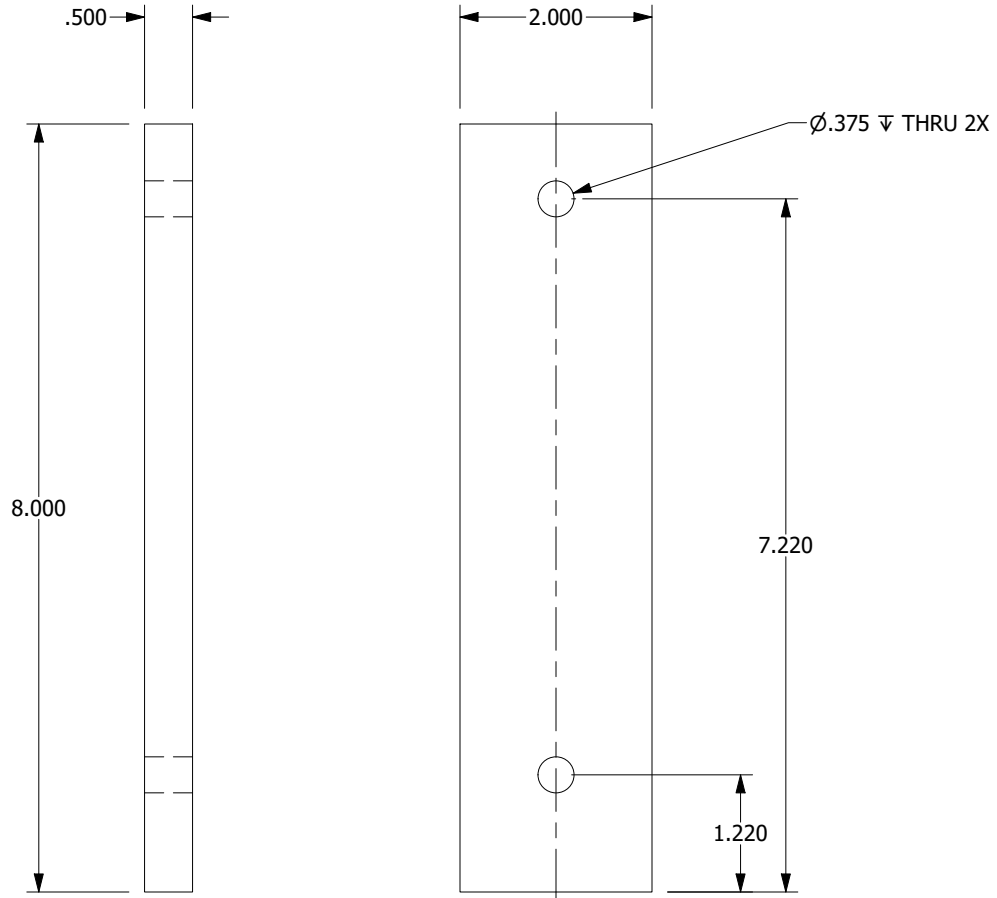
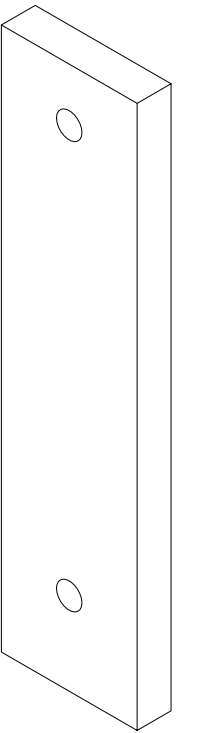
PARTS LIST

<p>QUALITY SYMBOLS</p> <p>DENOTES CRITICAL INSPECTION</p>	<p>UNLESS OTHERWISE SPECIFIED: DIMENSIONS ARE IN INCHES</p> <p>TOLERANCES:</p> <p>ANGLES X ± 1°</p> <p>1 PLACE DIM. X ± .1</p> <p>2 PLACE DIM. X ± .01</p> <p>3 PLACE DIM. X ± .005</p>	<p>CONTRACT NO.</p>			
		<p>DATE</p>			<p>MECHANICAL</p> <p>B. VILLANUEVA</p> <p>10/21/2023</p>
		<p>DATE</p>			
		<p>DATE</p>			<p>OPERATIONS</p> <p>B. BLACH</p> <p>10/21/2023</p>
<p>DATE</p>		<p>APPROVED</p> <p>G. COLE</p>			
<p>NEXT ASSY</p> <p>USED ON</p> <p>APPLICATION</p>		<p>THIRD ANGLE PROJECTION</p>		<p>SIZE</p> <p>B</p>	
				<p>CAGE CODE</p> <p>0A0B7</p>	
				<p>DRAWING NO.</p> <p>10-52028 braze fixture</p>	
				<p>SCALE: NONE</p>	
				<p>UNIT WT.</p>	
				<p>REV</p>	
				<p>SHEET 1 OF 10</p>	

PROPRIETARY NOTE: THIS DOCUMENT CONTAINS INFORMATION WHICH IS CONFIDENTIAL AND PROPRIETARY TO MAINSTREAM ENGINEERING CORPORATION AND SHALL NOT BE USED, DUPLICATED OR DISCLOSED TO ANYONE, IN WHOLE OR IN PART, OR USED FOR ANY PURPOSE OTHER THAN WHICH IT WAS OBTAINED WITHOUT FIRST OBTAINING THE EXPRESSED WRITTEN CONSENT FROM MAINSTREAM ENGINEERING CORPORATION.

DRAWING NO. 10-52028 braze fixture

MATERIAL: ALUMINUM ALLOY, 6061, FLAT BAR, 2" x .5"



D

C

B

A

D

C

B

A

DWG NO. 10-52028 braze fixture

PROPRIETARY NOTE: THIS DOCUMENT CONTAINS INFORMATION WHICH IS CONFIDENTIAL AND PROPRIETARY TO MAINSTREAM ENGINEERING CORPORATION AND SHALL NOT BE USED, DUPLICATED OR DISCLOSED TO ANYONE, IN WHOLE OR IN PART, OR USED FOR ANY PURPOSE OTHER THAN WHICH IT WAS OBTAINED WITHOUT FIRST OBTAINING THE EXPRESSED WRITTEN CONSENT FROM MAINSTREAM ENGINEERING CORPORATION.

ITEM NO. 19
PART NO. 52028-1-01

SIZE	CAGE CODE	DRAWING NO.
B	0A0B7	10-52028 braze fixture
SCALE: NONE		REV SHEET 2 OF 10

8

7

6

5

4

3

2

1

8

7

6

5

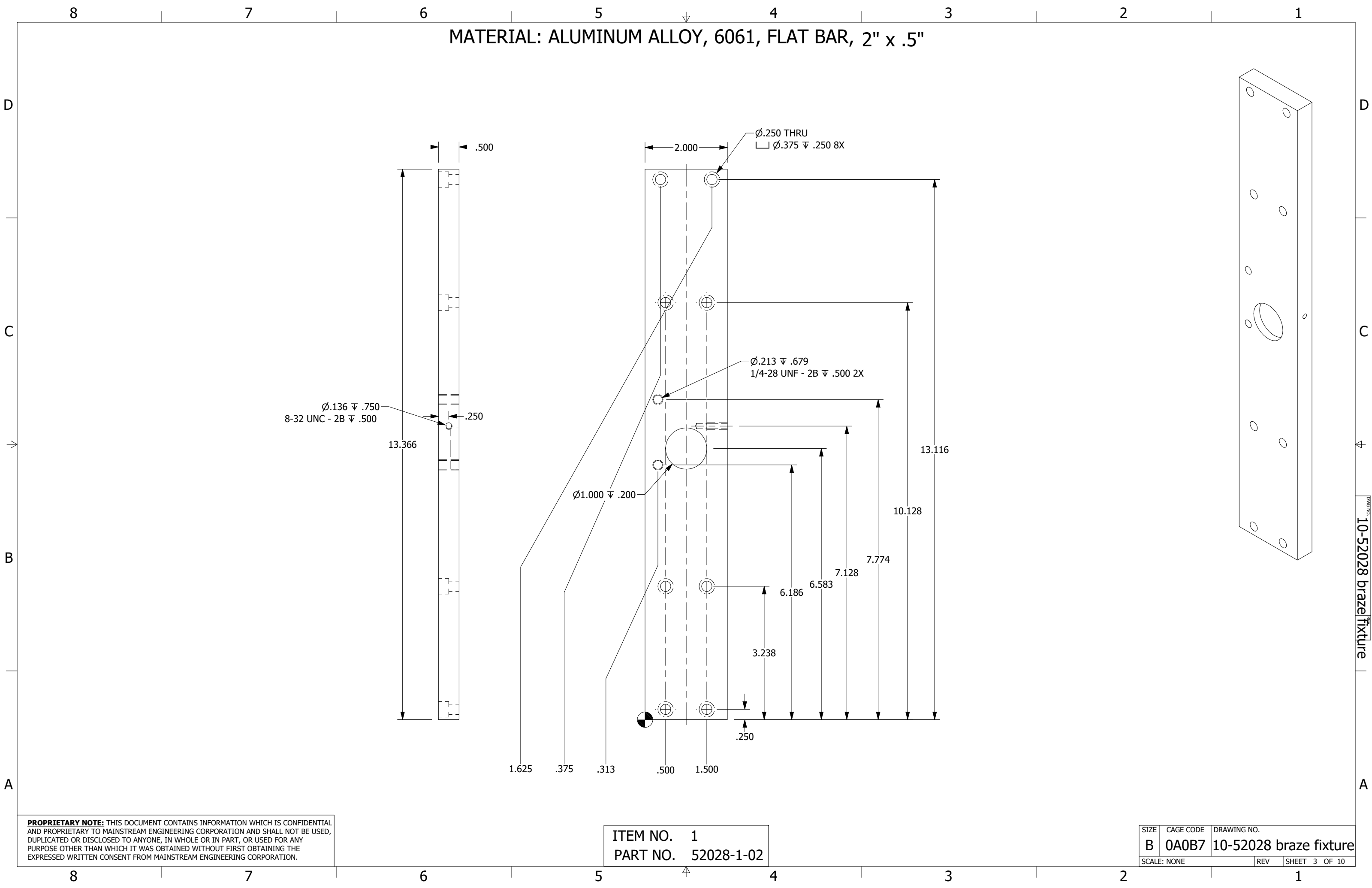
4

3

2

1

MATERIAL: ALUMINUM ALLOY, 6061, FLAT BAR, 2" x .5"



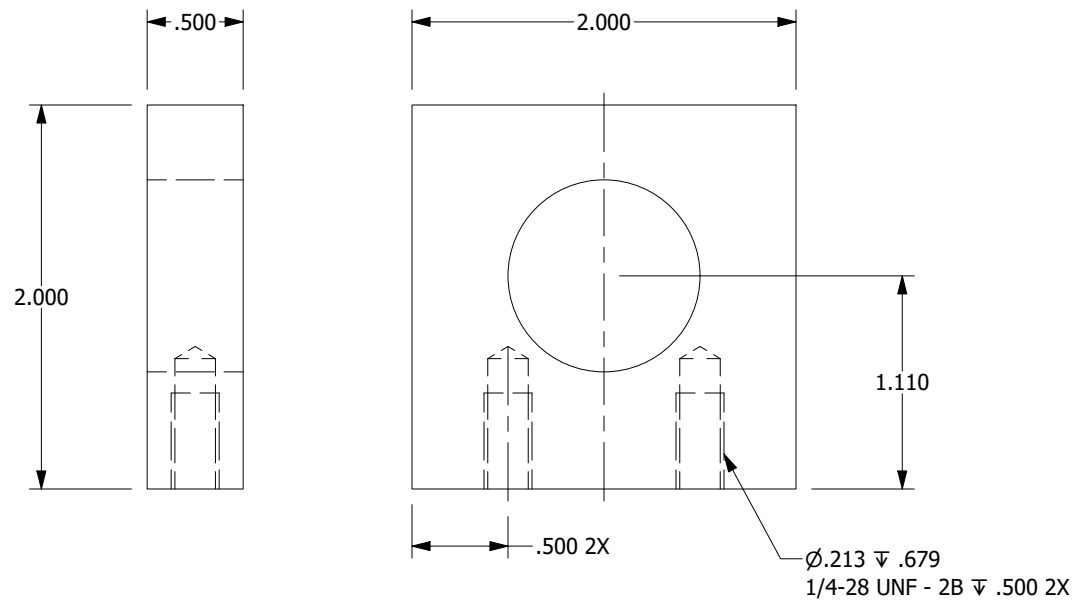
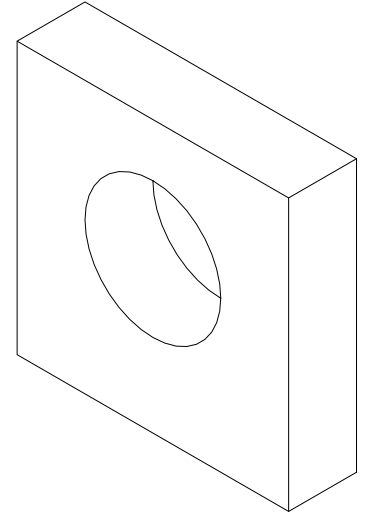
PROPRIETARY NOTE: THIS DOCUMENT CONTAINS INFORMATION WHICH IS CONFIDENTIAL AND PROPRIETARY TO MAINSTREAM ENGINEERING CORPORATION AND SHALL NOT BE USED, DUPLICATED OR DISCLOSED TO ANYONE, IN WHOLE OR IN PART, OR USED FOR ANY PURPOSE OTHER THAN WHICH IT WAS OBTAINED WITHOUT FIRST OBTAINING THE EXPRESSED WRITTEN CONSENT FROM MAINSTREAM ENGINEERING CORPORATION.

ITEM NO. 1
PART NO. 52028-1-02

SIZE	CAGE CODE	DRAWING NO.
B	0A0B7	10-52028 braze fixture
SCALE: NONE		REV SHEET 3 OF 10

DRAWING NO. 10-52028 braze fixture

MATERIAL: ALUMINUM ALLOY, 6061, FLAT BAR, 2" x .5"



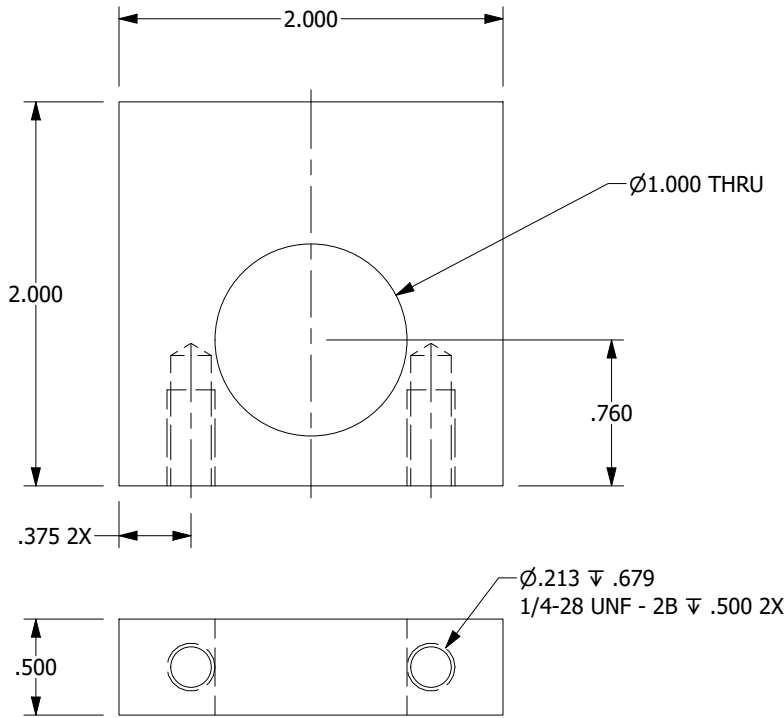
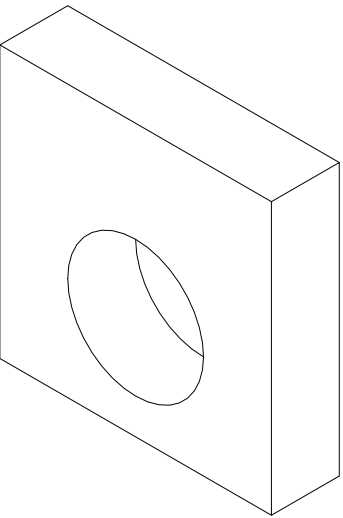
PROPRIETARY NOTE: THIS DOCUMENT CONTAINS INFORMATION WHICH IS CONFIDENTIAL AND PROPRIETARY TO MAINSTREAM ENGINEERING CORPORATION AND SHALL NOT BE USED, DUPLICATED OR DISCLOSED TO ANYONE, IN WHOLE OR IN PART, OR USED FOR ANY PURPOSE OTHER THAN WHICH IT WAS OBTAINED WITHOUT FIRST OBTAINING THE EXPRESSED WRITTEN CONSENT FROM MAINSTREAM ENGINEERING CORPORATION.

ITEM NO. 8
PART NO. 52028-1-03

SIZE	CAGE CODE	DRAWING NO.
B	0A0B7	10-52028 braze fixture
SCALE: NONE		REV SHEET 4 OF 10

DRAWING NO. 10-52028 braze fixture

MATERIAL: ALUMINUM ALLOY, 6061, FLAT BAR, 2" X .5"



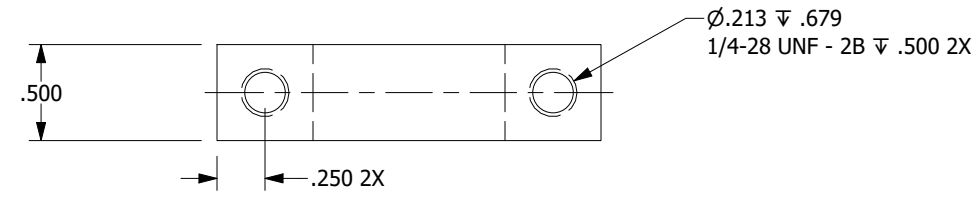
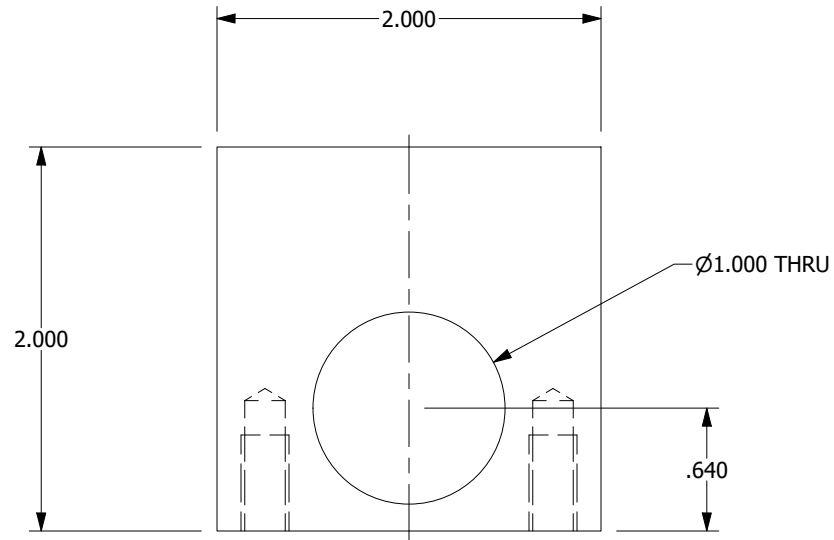
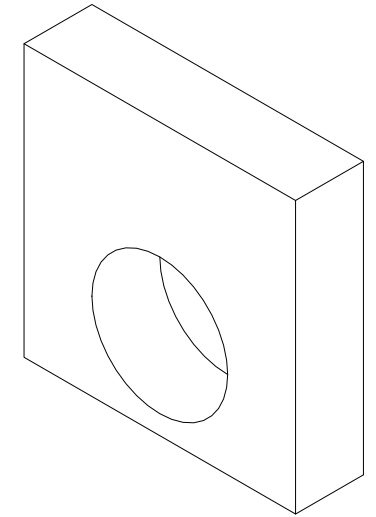
DWG NO. 10-52028 braze fixture

PROPRIETARY NOTE: THIS DOCUMENT CONTAINS INFORMATION WHICH IS CONFIDENTIAL AND PROPRIETARY TO MAINSTREAM ENGINEERING CORPORATION AND SHALL NOT BE USED, DUPLICATED OR DISCLOSED TO ANYONE, IN WHOLE OR IN PART, OR USED FOR ANY PURPOSE OTHER THAN WHICH IT WAS OBTAINED WITHOUT FIRST OBTAINING THE EXPRESSED WRITTEN CONSENT FROM MAINSTREAM ENGINEERING CORPORATION.

ITEM NO. 9
PART NO. 52028-1-04

SIZE	CAGE CODE	DRAWING NO.
B	0A0B7	10-52028 braze fixture
SCALE: NONE		REV SHEET 5 OF 10

MATERIAL: ALUMINUM ALLOY, 6061, FLAT BAR, 2" X .5"



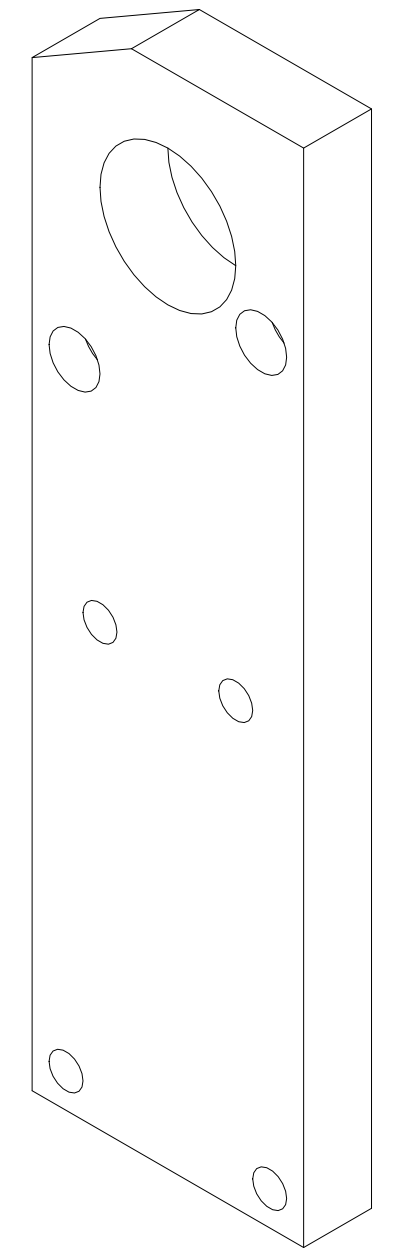
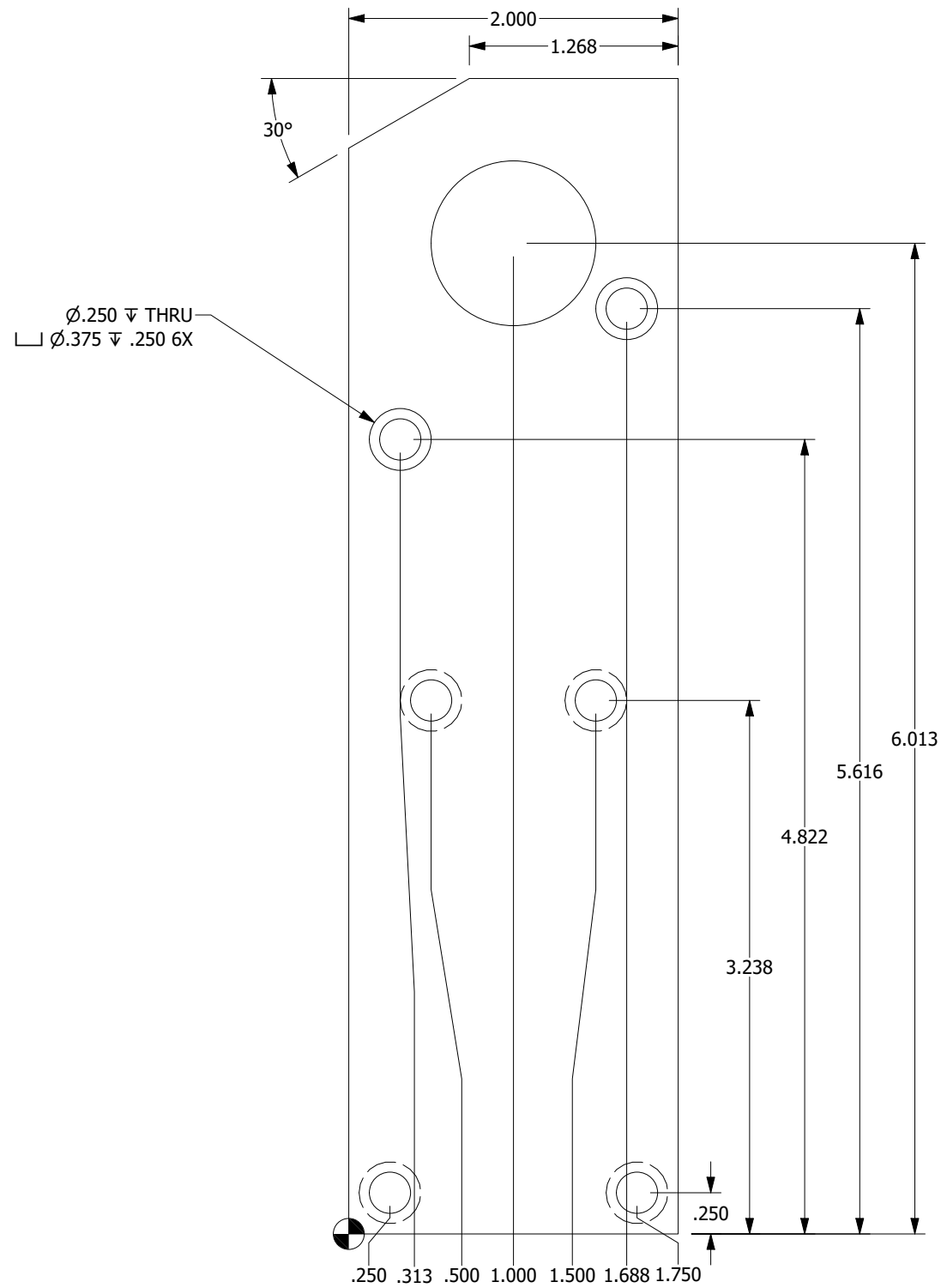
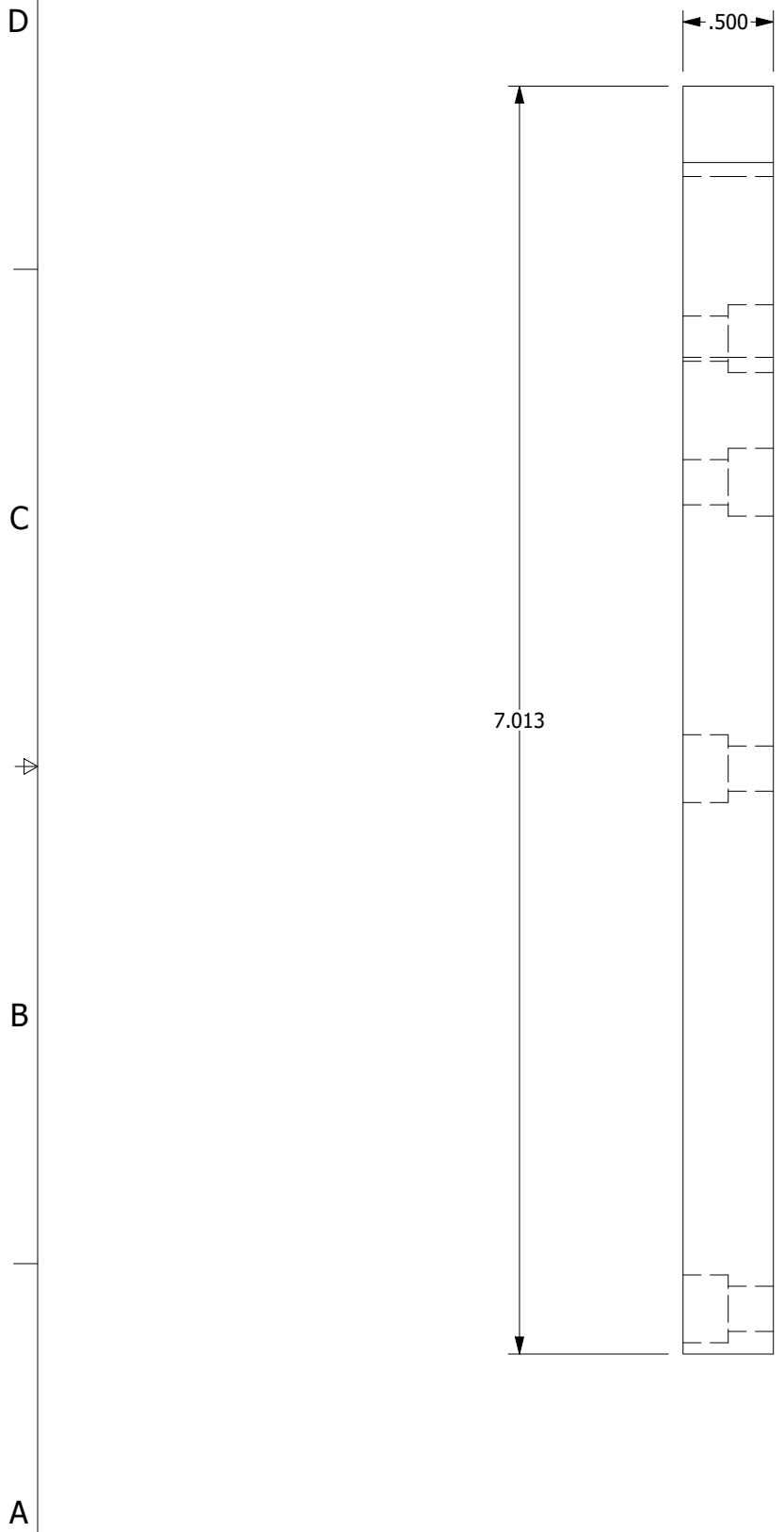
DRAWING NO. 10-52028 braze fixture

PROPRIETARY NOTE: THIS DOCUMENT CONTAINS INFORMATION WHICH IS CONFIDENTIAL AND PROPRIETARY TO MAINSTREAM ENGINEERING CORPORATION AND SHALL NOT BE USED, DUPLICATED OR DISCLOSED TO ANYONE, IN WHOLE OR IN PART, OR USED FOR ANY PURPOSE OTHER THAN WHICH IT WAS OBTAINED WITHOUT FIRST OBTAINING THE EXPRESSED WRITTEN CONSENT FROM MAINSTREAM ENGINEERING CORPORATION.

ITEM NO. 10
PART NO. 52028-1-05

SIZE	CAGE CODE	DRAWING NO.
B	0A0B7	10-52028 braze fixture
SCALE: NONE		REV SHEET 6 OF 10

MATERIAL: ALUMINUM ALLOY, 6061, FLAT BAR, 2" x .5"



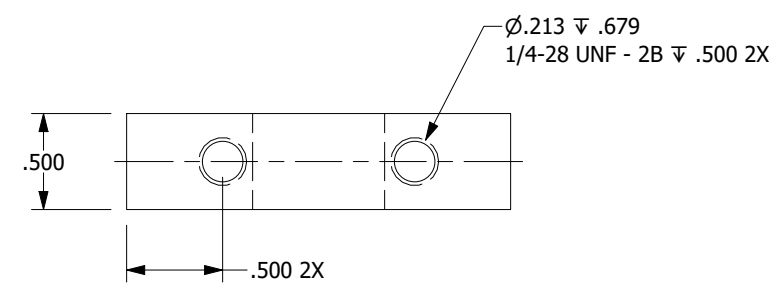
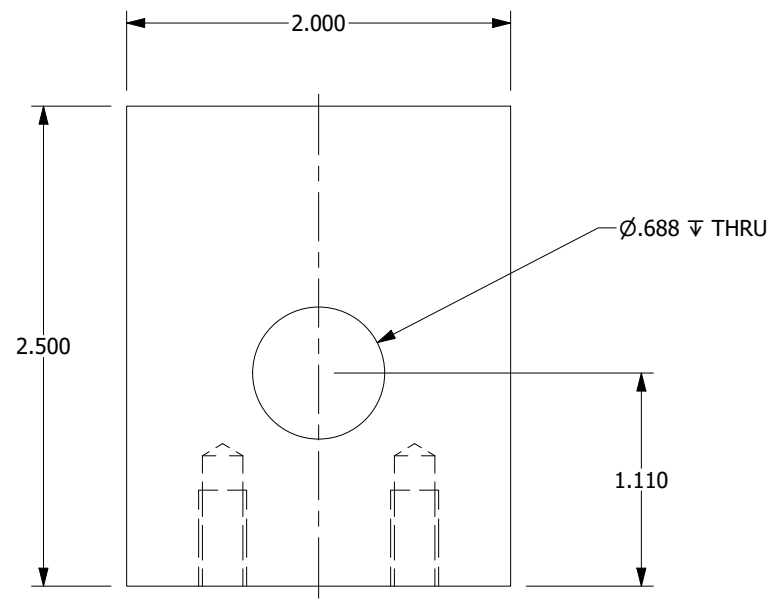
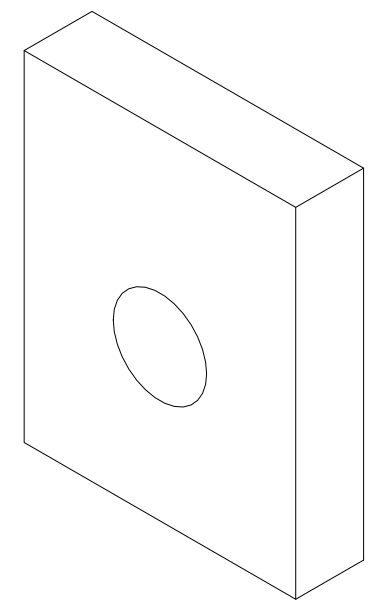
PROPRIETARY NOTE: THIS DOCUMENT CONTAINS INFORMATION WHICH IS CONFIDENTIAL AND PROPRIETARY TO MAINSTREAM ENGINEERING CORPORATION AND SHALL NOT BE USED, DUPLICATED OR DISCLOSED TO ANYONE, IN WHOLE OR IN PART, OR USED FOR ANY PURPOSE OTHER THAN WHICH IT WAS OBTAINED WITHOUT FIRST OBTAINING THE EXPRESSED WRITTEN CONSENT FROM MAINSTREAM ENGINEERING CORPORATION.

ITEM NO. 2
PART NO. 52028-1-06

SIZE	CAGE CODE	DRAWING NO.
B	0A0B7	10-52028 braze fixture
SCALE: NONE	REV	SHEET 7 OF 10

DRAWING NO. 10-52028 braze fixture

MATERIAL: ALUMINUM ALLOY, 6061, FLAT BAR, 2" x .5"



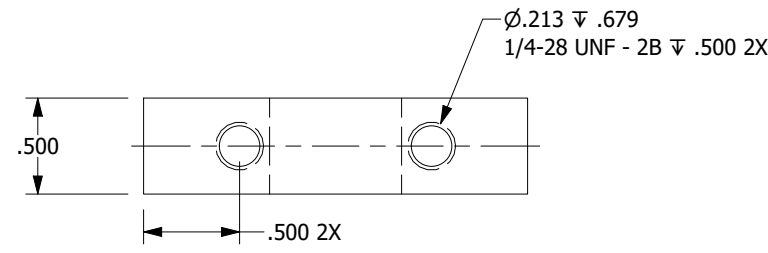
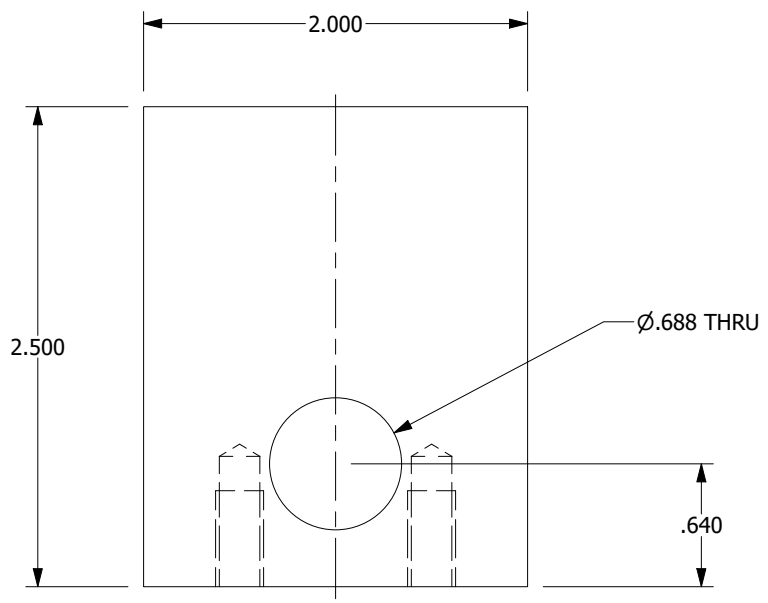
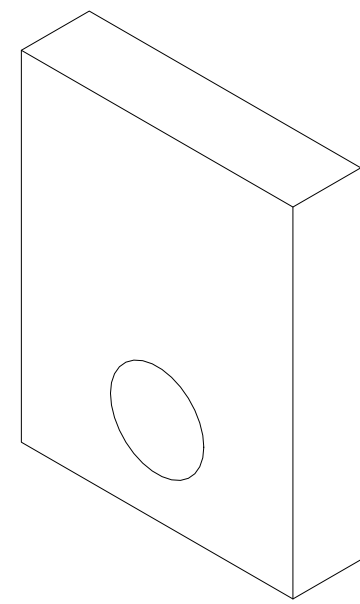
DRAWING NO. 10-52028 braze fixture

PROPRIETARY NOTE: THIS DOCUMENT CONTAINS INFORMATION WHICH IS CONFIDENTIAL AND PROPRIETARY TO MAINSTREAM ENGINEERING CORPORATION AND SHALL NOT BE USED, DUPLICATED OR DISCLOSED TO ANYONE, IN WHOLE OR IN PART, OR USED FOR ANY PURPOSE OTHER THAN WHICH IT WAS OBTAINED WITHOUT FIRST OBTAINING THE EXPRESSED WRITTEN CONSENT FROM MAINSTREAM ENGINEERING CORPORATION.

ITEM NO. 5
PART NO. 52028-1-07

SIZE	CAGE CODE	DRAWING NO.
B	0A0B7	10-52028 braze fixture
SCALE: NONE		REV SHEET 8 OF 10

MATERIAL: ALUMINUM ALLOY, 6061, FLAT BAR, 2" X .5"



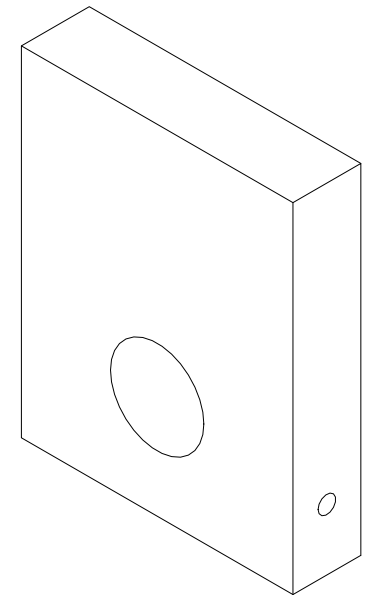
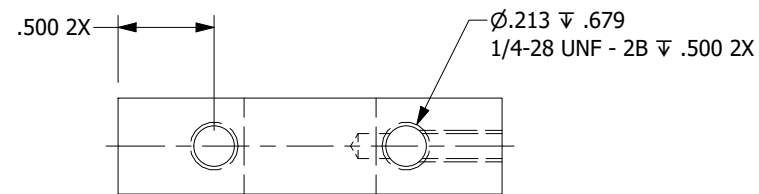
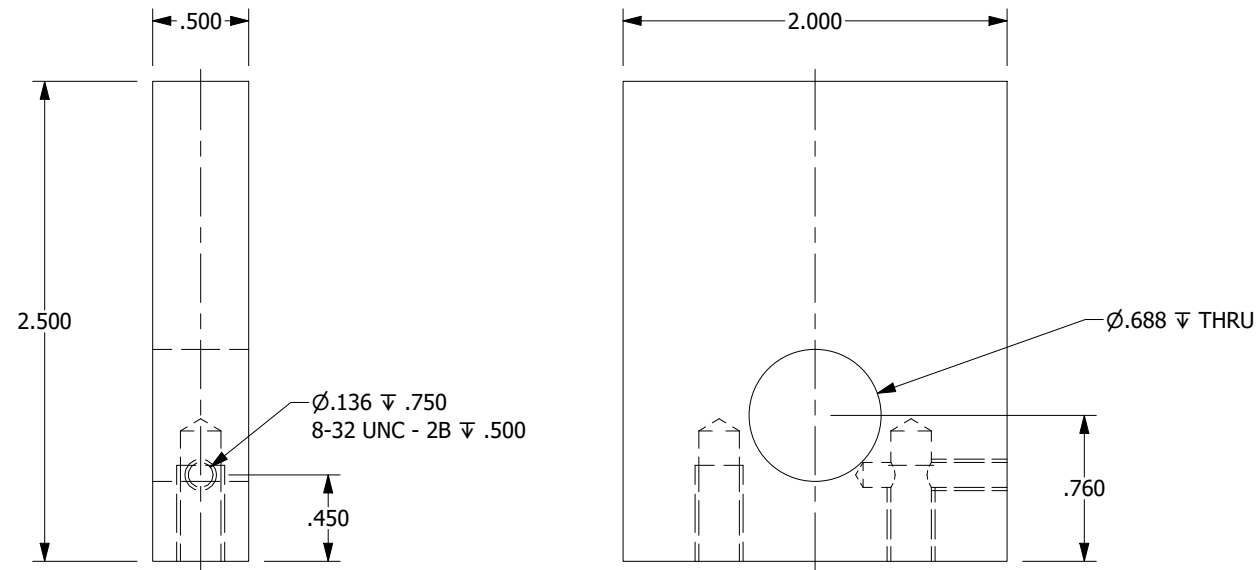
DRAWING NO. 10-52028 braze fixture

PROPRIETARY NOTE: THIS DOCUMENT CONTAINS INFORMATION WHICH IS CONFIDENTIAL AND PROPRIETARY TO MAINSTREAM ENGINEERING CORPORATION AND SHALL NOT BE USED, DUPLICATED OR DISCLOSED TO ANYONE, IN WHOLE OR IN PART, OR USED FOR ANY PURPOSE OTHER THAN WHICH IT WAS OBTAINED WITHOUT FIRST OBTAINING THE EXPRESSED WRITTEN CONSENT FROM MAINSTREAM ENGINEERING CORPORATION.

ITEM NO. 6
PART NO. 52028-1-08

SIZE	CAGE CODE	DRAWING NO.
B	0A0B7	10-52028 braze fixture
SCALE: NONE	REV	SHEET 9 OF 10

MATERIAL: ALUMINUM ALLOY, 6061, FLAT BAR, 2" x .5"



PROPRIETARY NOTE: THIS DOCUMENT CONTAINS INFORMATION WHICH IS CONFIDENTIAL AND PROPRIETARY TO MAINSTREAM ENGINEERING CORPORATION AND SHALL NOT BE USED, DUPLICATED OR DISCLOSED TO ANYONE, IN WHOLE OR IN PART, OR USED FOR ANY PURPOSE OTHER THAN WHICH IT WAS OBTAINED WITHOUT FIRST OBTAINING THE EXPRESSED WRITTEN CONSENT FROM MAINSTREAM ENGINEERING CORPORATION.

ITEM NO. 3
PART NO. 52028-1-09

SIZE	CAGE CODE	DRAWING NO.
B	0A0B7	10-52028 braze fixture
SCALE: NONE	REV	SHEET 10 OF 10

DWG NO. 10-52028 braze fixture