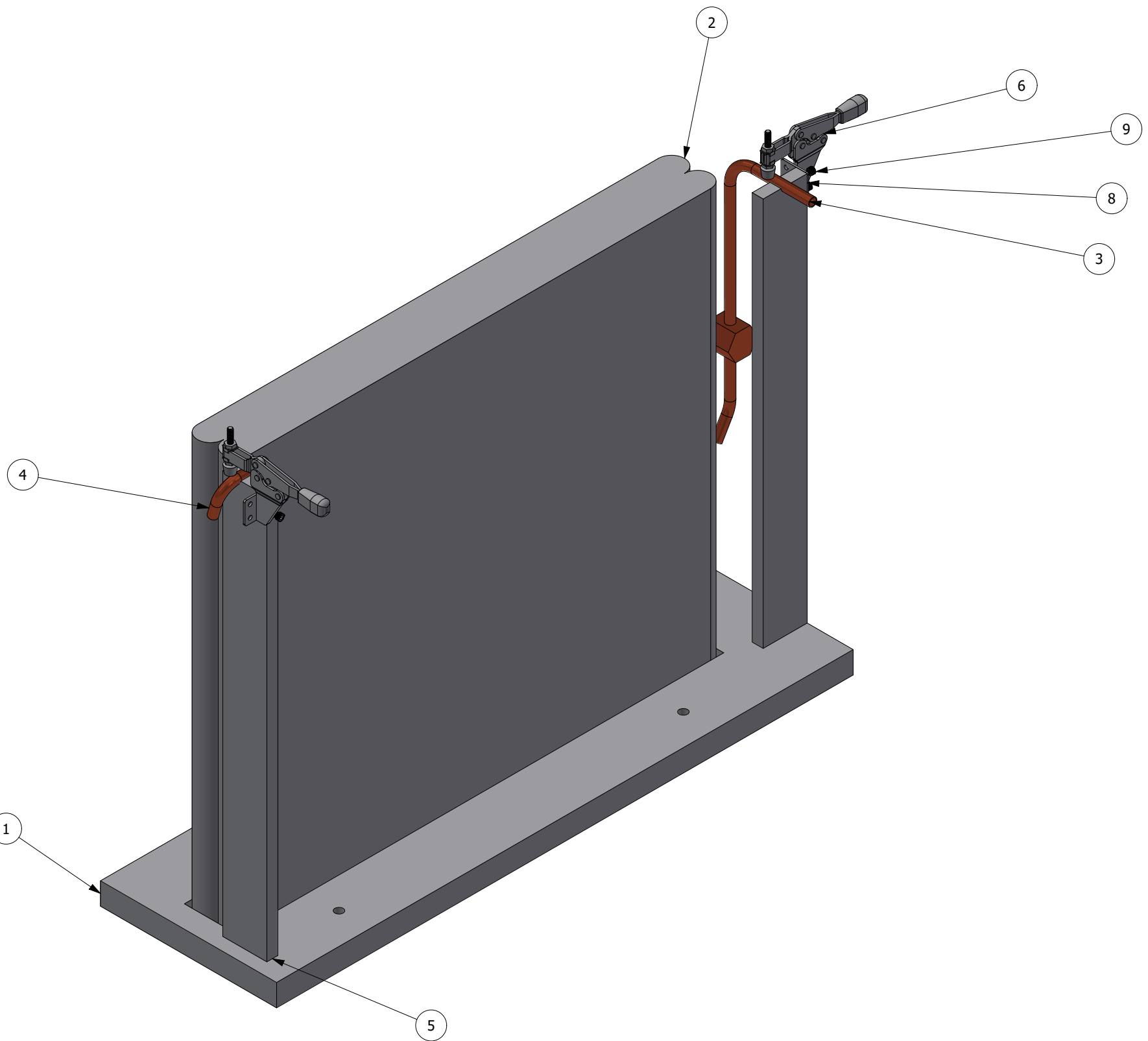


NOTES:

1. INTERPRET THIS DRAWING IN ACCORDANCE WITH ASME Y14.100.
2. REMOVE ALL BURRS AND SHARP EDGES.

REVISIONS				
REV	ZONE	DESCRIPTION	DATE	APPROVED
A				GSC



ITEM	PART NUMBER	QTY	NOMENCLATURE OR DESCRIPTION	SPECIFICATION
9	90128A194	4	Zinc-Plated Alloy Steel Socket Head Screw	
8	52010-1-01	1	short riser	
7	90128A370	2	Zinc-Plated Alloy Steel Socket Head Screw	
6	2423N11	2	Side-Mount Hold-Down Toggle Clamp	
5	52010-1-02	1	tall riser	
4	10-52302 placeholder pipe	1	Copper tube, .375 OD, length including fitting	
3	10-52300 placeholder pipe	1	Copper tube, .375 OD, length including fitting	
2	evaporator coil	1	*not a part, only in CAD*	
1	52010-1-03	1	base	

PARTS LIST

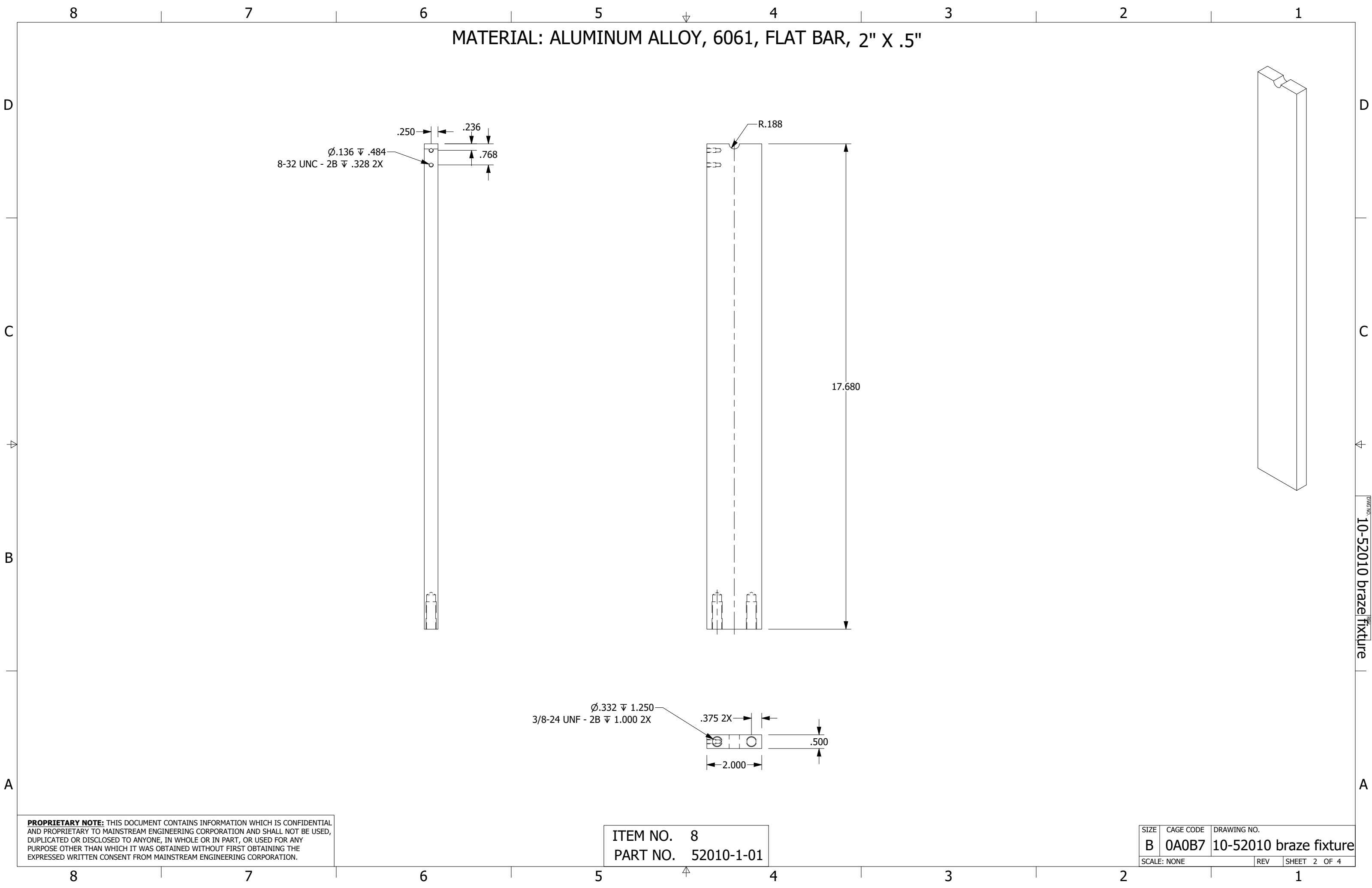
<p>QUALITY SYMBOLS</p> <p> DENOTES CRITICAL INSPECTION</p> <p></p>	UNLESS OTHERWISE SPECIFIED: DIMENSIONS ARE IN INCHES	CONTRACT NO.	
	TOLERANCES:	DATE	
	ANGLES X ± 1'	DATE	
	1 PLACE DIM. X ± .1	DATE	
2 PLACE DIM. X ± .01	DATE	MECHANICAL	<p>B. VILLANUEVA</p> <p>11/3/2023</p>
3 PLACE DIM. X ± .005	DATE	ELECTRICAL	
NEXT ASSY	USED ON	OPERATIONS	<p>B. BLACH</p> <p>DATE</p>
APPLICATION	THIRD ANGLE PROJECTION	APPROVED	<p>G. COLE</p> <p>DATE</p>

PROPRIETARY NOTE: THIS DOCUMENT CONTAINS INFORMATION WHICH IS CONFIDENTIAL AND PROPRIETARY TO MAINSTREAM ENGINEERING CORPORATION AND SHALL NOT BE USED, DUPLICATED OR DISCLOSED TO ANYONE, IN WHOLE OR IN PART, OR USED FOR ANY PURPOSE OTHER THAN WHICH IT WAS OBTAINED WITHOUT FIRST OBTAINING THE EXPRESSED WRITTEN CONSENT FROM MAINSTREAM ENGINEERING CORPORATION.

10-52010 braze fixture

SIZE	CAGE CODE	DRAWING NO.
B	0A0B7	10-52010 braze fixture
SCALE: NONE	UNIT WT.	REV
		SHEET 1 OF 4

MATERIAL: ALUMINUM ALLOY, 6061, FLAT BAR, 2" X .5"



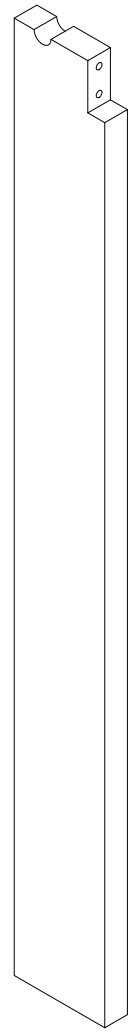
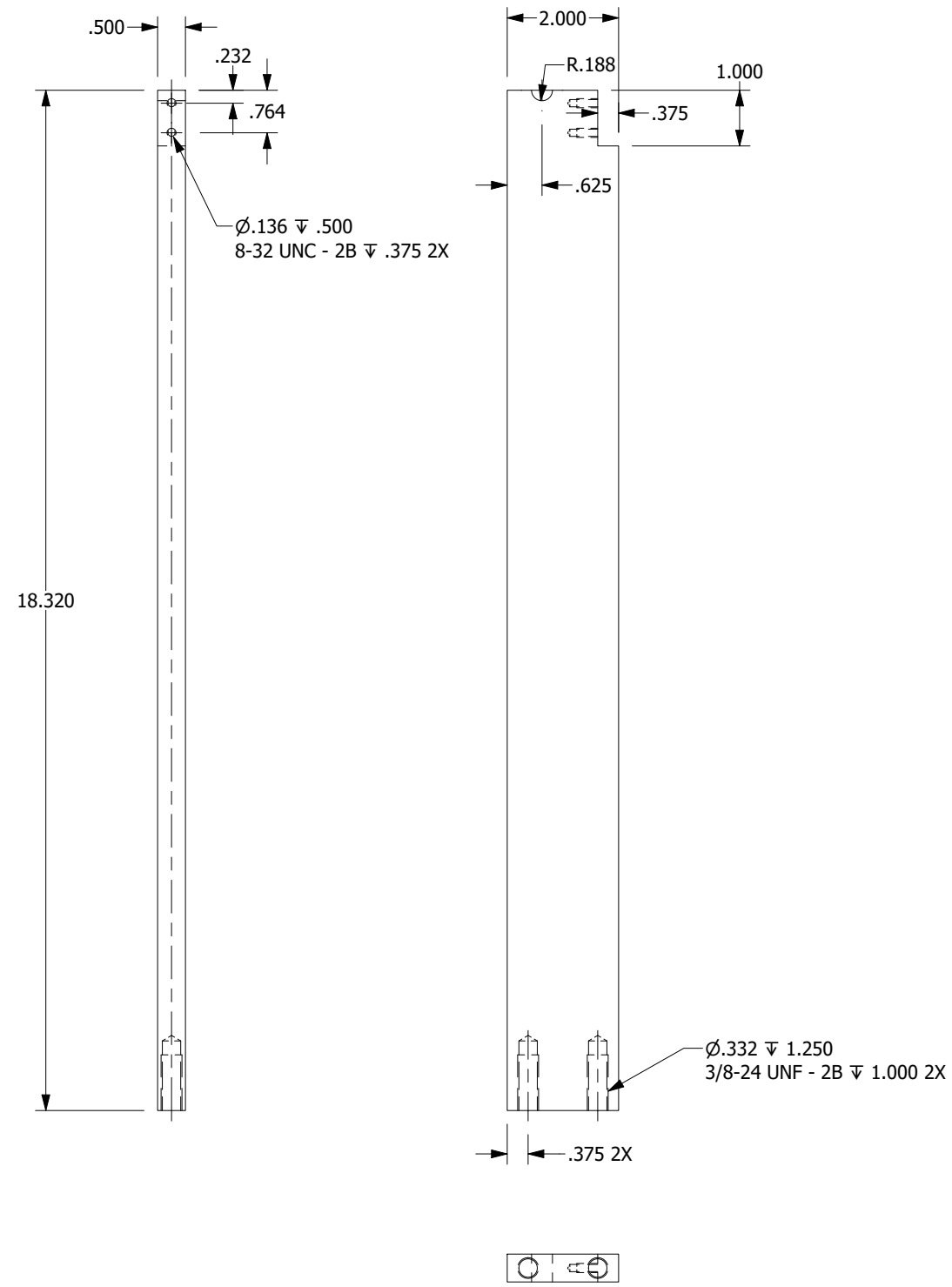
DRAWING NO. 10-52010 braze fixture

PROPRIETARY NOTE: THIS DOCUMENT CONTAINS INFORMATION WHICH IS CONFIDENTIAL AND PROPRIETARY TO MAINSTREAM ENGINEERING CORPORATION AND SHALL NOT BE USED, DUPLICATED OR DISCLOSED TO ANYONE, IN WHOLE OR IN PART, OR USED FOR ANY PURPOSE OTHER THAN WHICH IT WAS OBTAINED WITHOUT FIRST OBTAINING THE EXPRESSED WRITTEN CONSENT FROM MAINSTREAM ENGINEERING CORPORATION.

ITEM NO. 8
PART NO. 52010-1-01

SIZE	CAGE CODE	DRAWING NO.
B	0A0B7	10-52010 braze fixture
SCALE: NONE	REV	SHEET 2 OF 4

MATERIAL: ALUMINUM ALLOY, 6061, FLAT BAR, 2" X .5"



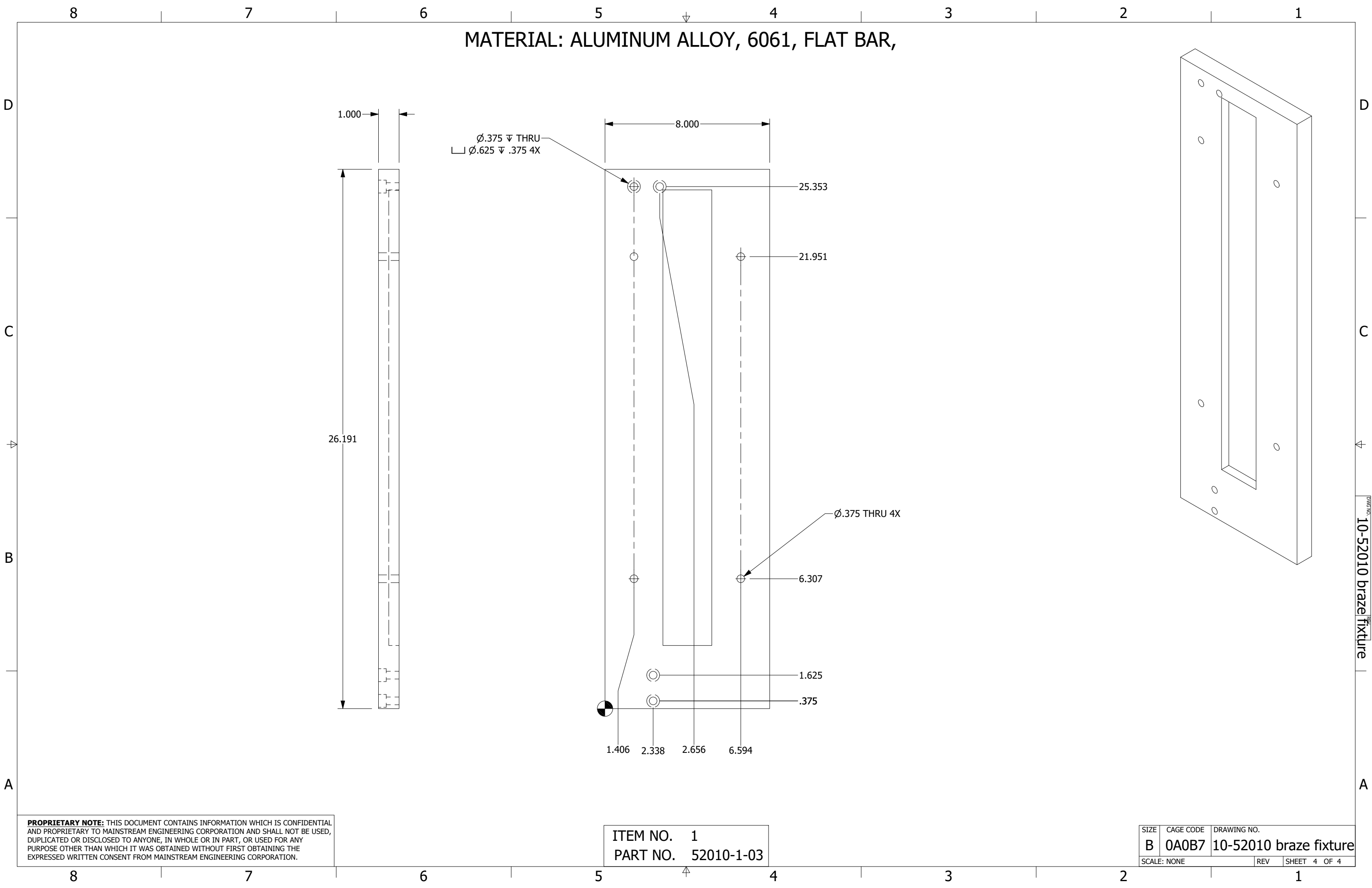
PROPRIETARY NOTE: THIS DOCUMENT CONTAINS INFORMATION WHICH IS CONFIDENTIAL AND PROPRIETARY TO MAINSTREAM ENGINEERING CORPORATION AND SHALL NOT BE USED, DUPLICATED OR DISCLOSED TO ANYONE, IN WHOLE OR IN PART, OR USED FOR ANY PURPOSE OTHER THAN WHICH IT WAS OBTAINED WITHOUT FIRST OBTAINING THE EXPRESSED WRITTEN CONSENT FROM MAINSTREAM ENGINEERING CORPORATION.

ITEM NO. 5
PART NO. 52010-1-02

SIZE	CAGE CODE	DRAWING NO.
B	0A0B7	10-52010 braze fixture
SCALE: NONE	REV	SHEET 3 OF 4

DWG NO. 10-52010 braze fixture

MATERIAL: ALUMINUM ALLOY, 6061, FLAT BAR,



PROPRIETARY NOTE: THIS DOCUMENT CONTAINS INFORMATION WHICH IS CONFIDENTIAL AND PROPRIETARY TO MAINSTREAM ENGINEERING CORPORATION AND SHALL NOT BE USED, DUPLICATED OR DISCLOSED TO ANYONE, IN WHOLE OR IN PART, OR USED FOR ANY PURPOSE OTHER THAN WHICH IT WAS OBTAINED WITHOUT FIRST OBTAINING THE EXPRESSED WRITTEN CONSENT FROM MAINSTREAM ENGINEERING CORPORATION.

ITEM NO. 1
PART NO. 52010-1-03

SIZE	CAGE CODE	DRAWING NO.
B	0A0B7	10-52010 braze fixture
SCALE: NONE	REV	SHEET 4 OF 4

DRAWING NO. 10-52010 braze fixture