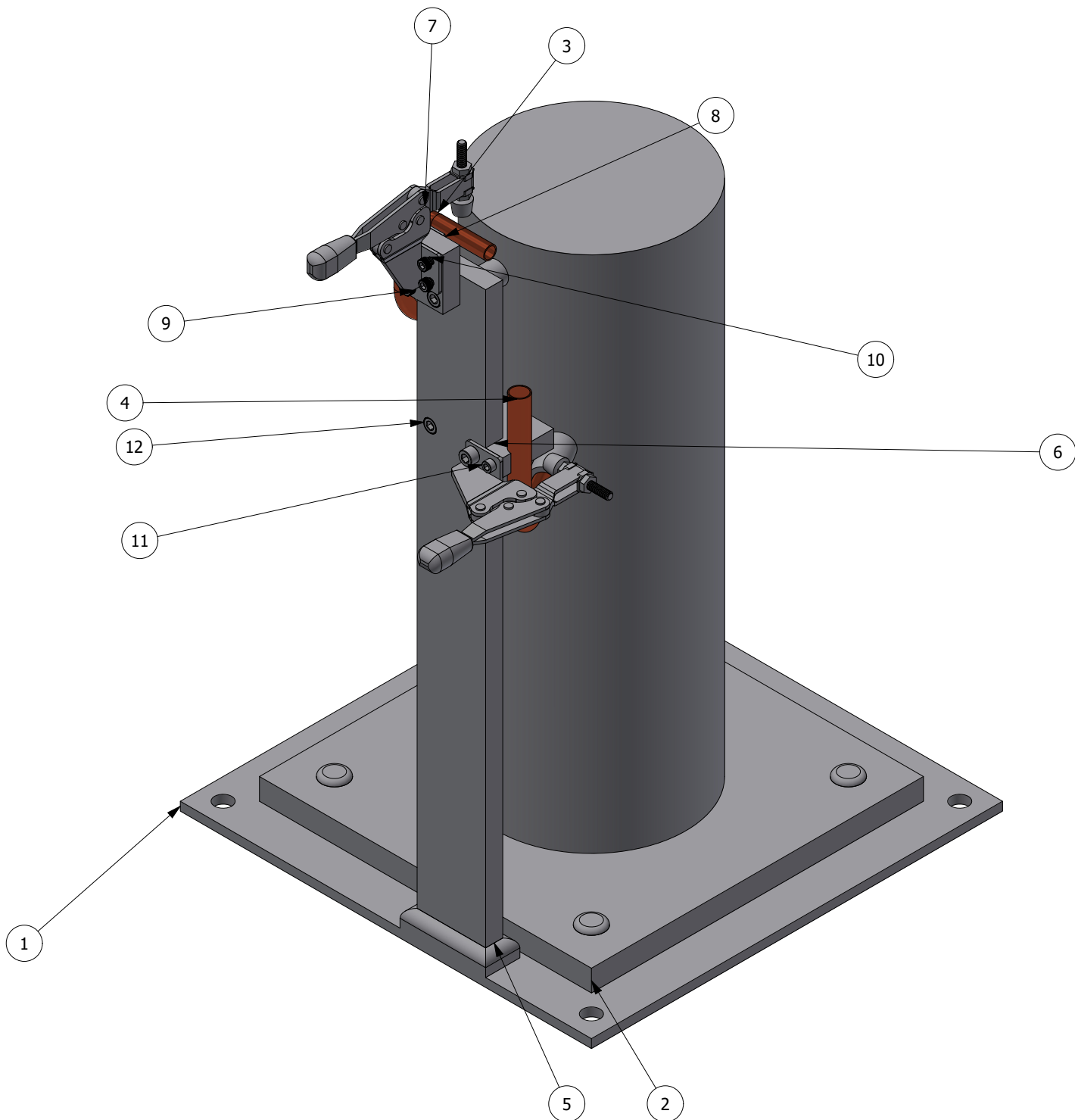


NOTES:

1. INTERPRET THIS DRAWING IN ACCORDANCE WITH ASME Y14.100.
2. REMOVE ALL BURRS AND SHARP EDGES.

REVISIONS				
REV	ZONE	DESCRIPTION	DATE	APPROVED
A				GSC



ITEM	PART NUMBER	QTY	NOMENCLATURE OR DESCRIPTION	SPECIFICATION
13	91274A181	1	Zinc-Aluminum-Coated Alloy Steel Socket Head Screw	
12	90128A363	1	Zinc-Plated Alloy Steel Socket Head Screw	
11	91274A048	1	Zinc-Aluminum-Coated Alloy Steel Socket Head Screw	
10	90128A194	3	Zinc-Plated Alloy Steel Socket Head Screw	
9	90128A365	3	Zinc-Plated Alloy Steel Socket Head Screw	
8	52009-1-04	1	clamp offset	
7	2423N11	2	Side-Mount Hold-Down Toggle Clamp	
6	52009-1-03	1	side holder	
5	52009-1-02	1	riser	
4	10-52305 placeholder pipe	1	Copper tube, .375 OD, length including fitting	
3	10-52303 placeholder pipe	1	Copper tube, .375 OD, length including fitting	
2	compressor	1	*not a part, only in CAD*	
1	52009-1-01	1	base plate	

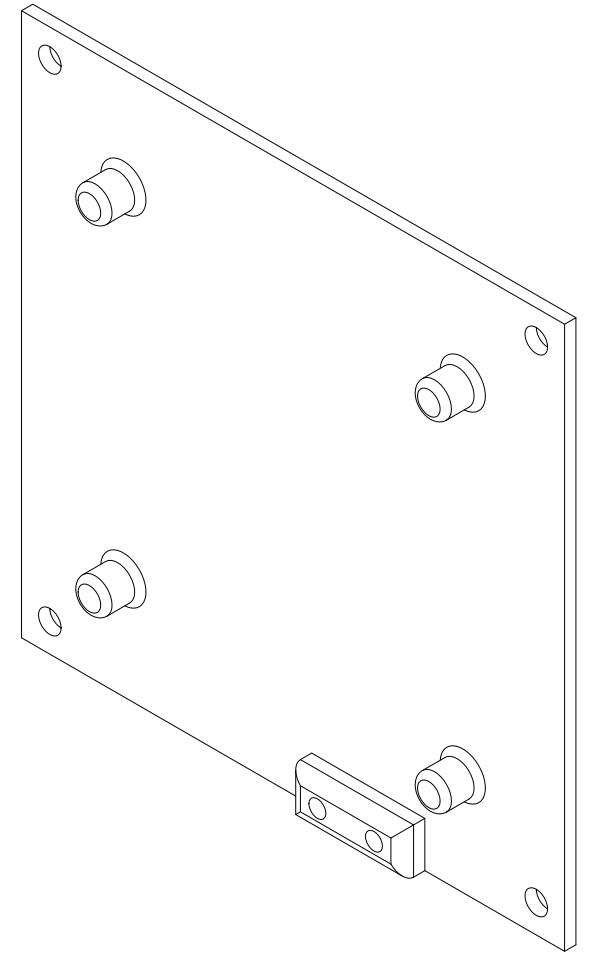
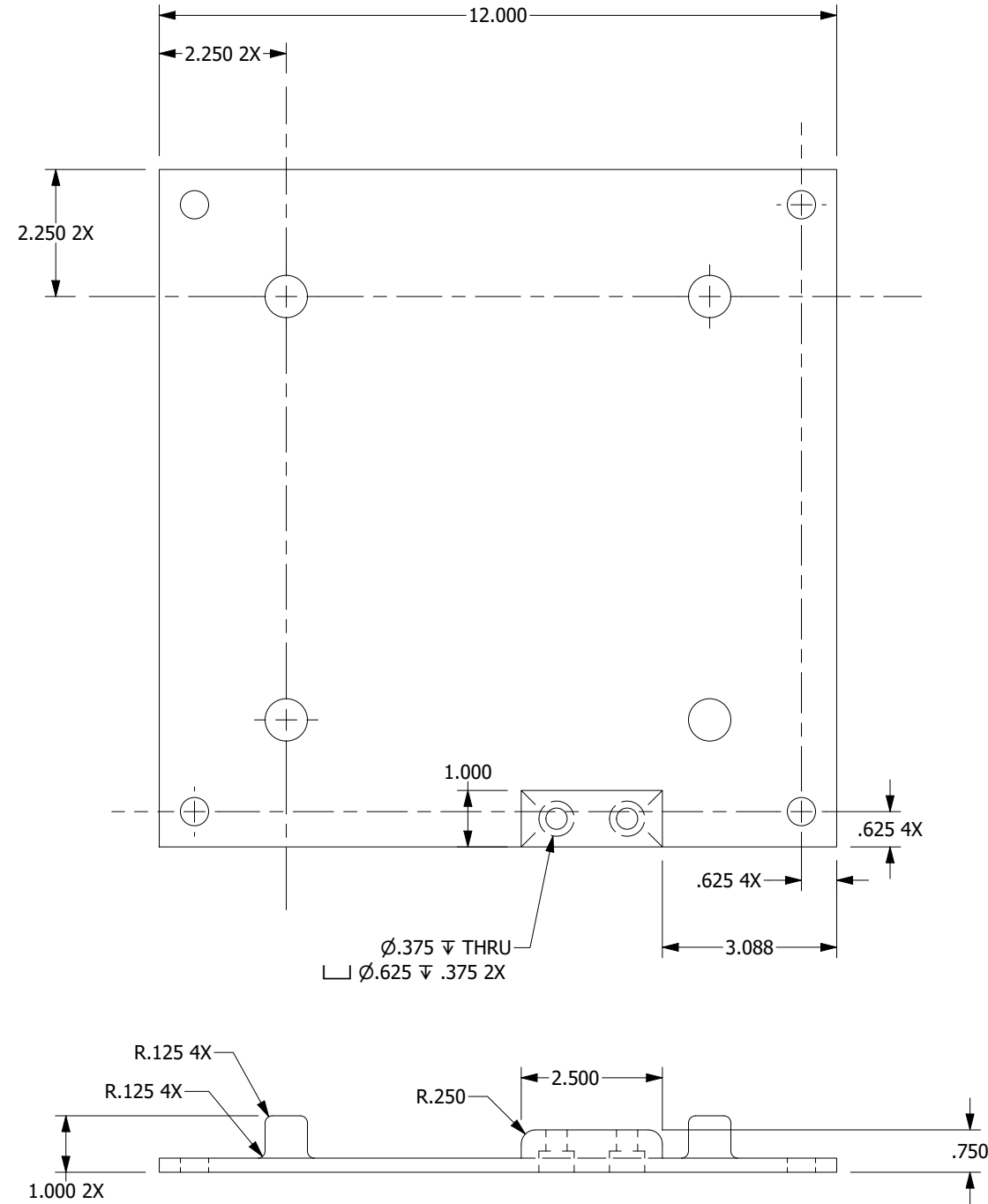
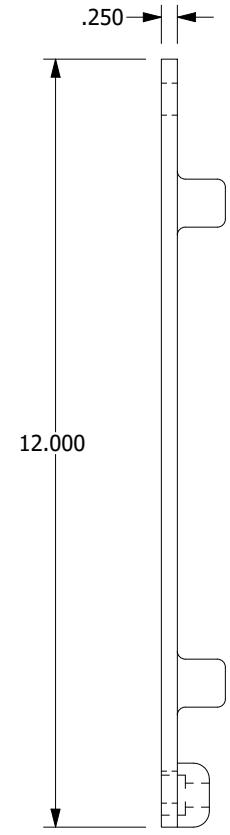
PARTS LIST

<p>QUALITY SYMBOLS</p> <p> DENOTES CRITICAL INSPECTION</p> <p></p>	UNLESS OTHERWISE SPECIFIED: DIMENSIONS ARE IN INCHES	CONTRACT NO.	
	TOLERANCES:	DATE	
	ANGLES X ± 1'	DRAWN B. VILLANUEVA 11/4/2023	
	1 PLACE DIM. X ± .1	CHECKED	
2 PLACE DIM. X ± .01	MECHANICAL B. VILLANUEVA 11/4/2023	DATE	
3 PLACE DIM. X ± .005	ELECTRICAL	DATE	
NEXT ASSY	OPERATIONS B. BLACH	DATE	SIZE B
USED ON	APPROVED G. COLE	DATE	CAGE CODE 0A0B7
APPLICATION			DRAWING NO. 10-52009 braze fixture
			SCALE: NONE UNIT WT. REV SHEET 1 OF 5

PROPRIETARY NOTE: THIS DOCUMENT CONTAINS INFORMATION WHICH IS CONFIDENTIAL AND PROPRIETARY TO MAINSTREAM ENGINEERING CORPORATION AND SHALL NOT BE USED, DUPLICATED OR DISCLOSED TO ANYONE, IN WHOLE OR IN PART, OR USED FOR ANY PURPOSE OTHER THAN WHICH IT WAS OBTAINED WITHOUT FIRST OBTAINING THE EXPRESSED WRITTEN CONSENT FROM MAINSTREAM ENGINEERING CORPORATION.

10-52009 braze fixture

MATERIAL: ALUMINUM ALLOY, 6061, FLAT BAR, 12" X 12" X 1"



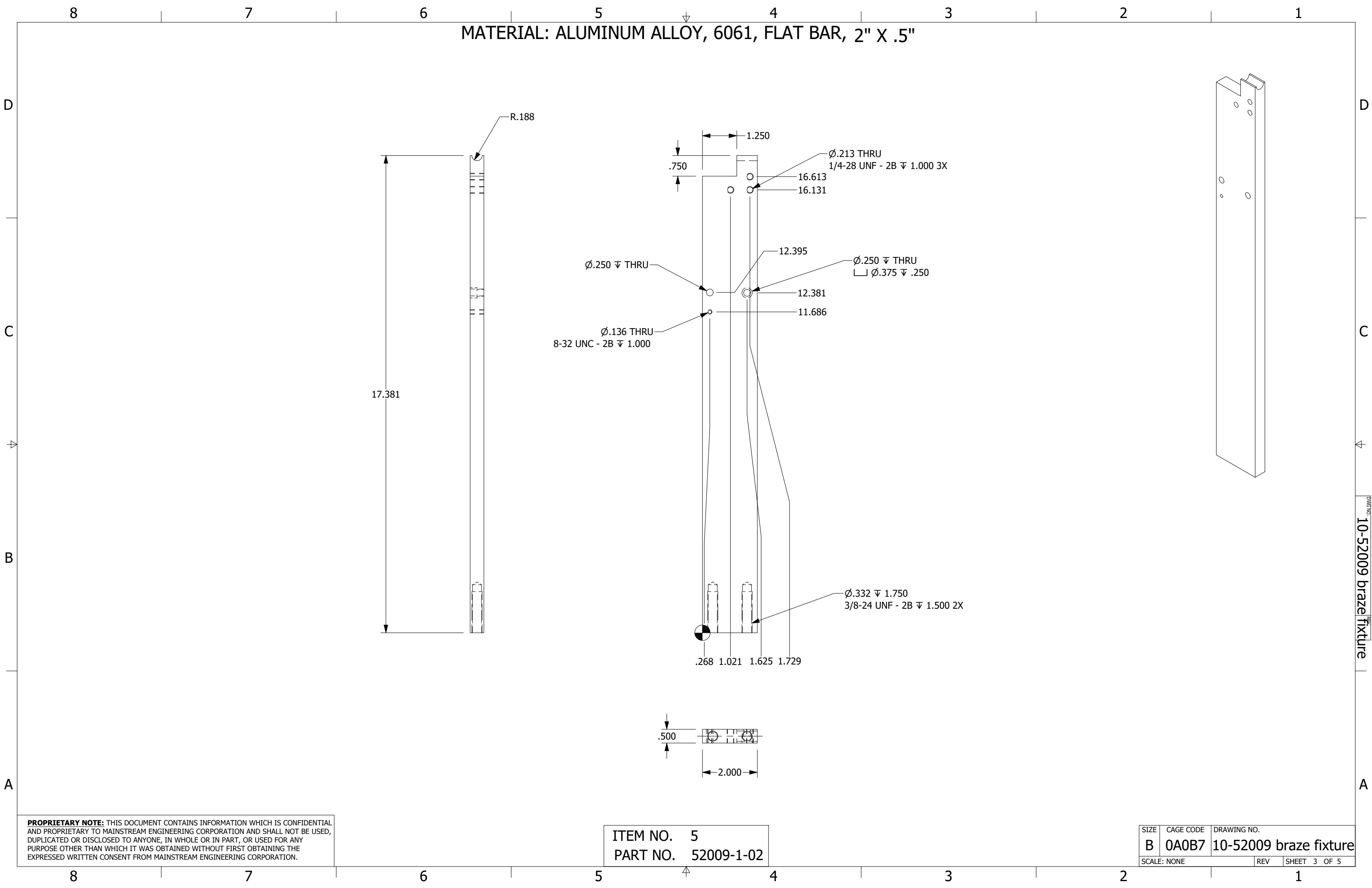
PROPRIETARY NOTE: THIS DOCUMENT CONTAINS INFORMATION WHICH IS CONFIDENTIAL AND PROPRIETARY TO MAINSTREAM ENGINEERING CORPORATION AND SHALL NOT BE USED, DUPLICATED OR DISCLOSED TO ANYONE, IN WHOLE OR IN PART, OR USED FOR ANY PURPOSE OTHER THAN WHICH IT WAS OBTAINED WITHOUT FIRST OBTAINING THE EXPRESSED WRITTEN CONSENT FROM MAINSTREAM ENGINEERING CORPORATION.

ITEM NO. 1
PART NO. 52009-1-01

SIZE	CAGE CODE	DRAWING NO.
B	0A0B7	10-52009 braze fixture
SCALE: NONE	REV	SHEET 2 OF 5

DRAWING NO. 10-52009 braze fixture

MATERIAL: ALUMINUM ALLOY, 6061, FLAT BAR, 2" X .5"



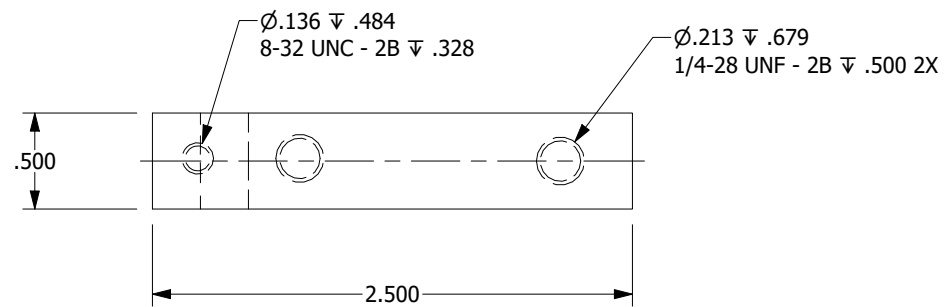
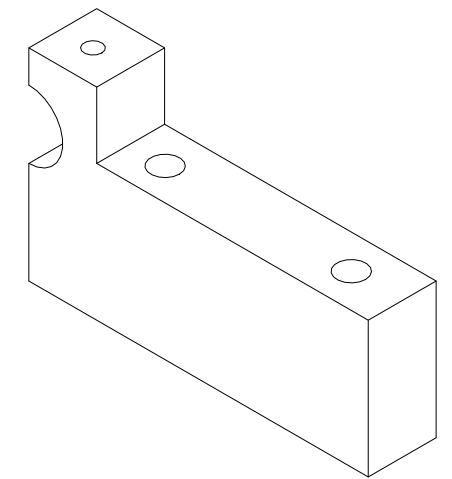
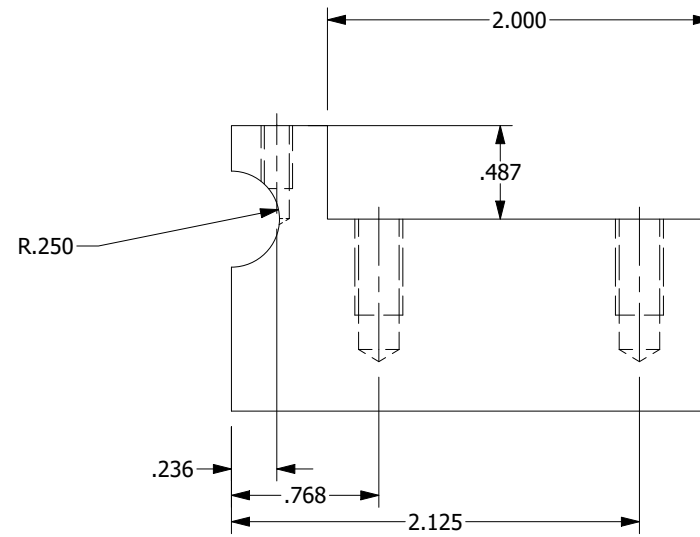
DRAWING NO. 10-52009 braze fixture

PROPRIETARY NOTE: THIS DOCUMENT CONTAINS INFORMATION WHICH IS CONFIDENTIAL AND PROPRIETARY TO MAINSTREAM ENGINEERING CORPORATION AND SHALL NOT BE USED, DUPLICATED OR DISCLOSED TO ANYONE, IN WHOLE OR IN PART, OR USED FOR ANY PURPOSE OTHER THAN WHICH IT WAS OBTAINED WITHOUT FIRST OBTAINING THE EXPRESSED WRITTEN CONSENT FROM MAINSTREAM ENGINEERING CORPORATION.

ITEM NO. 5
PART NO. 52009-1-02

SIZE	CAGE CODE	DRAWING NO.
B	0A0B7	10-52009 braze fixture
SCALE: NONE	REV	SHEET 3 OF 5

MATERIAL: ALUMINUM ALLOY, 6061, FLAT BAR, 2" X .5"



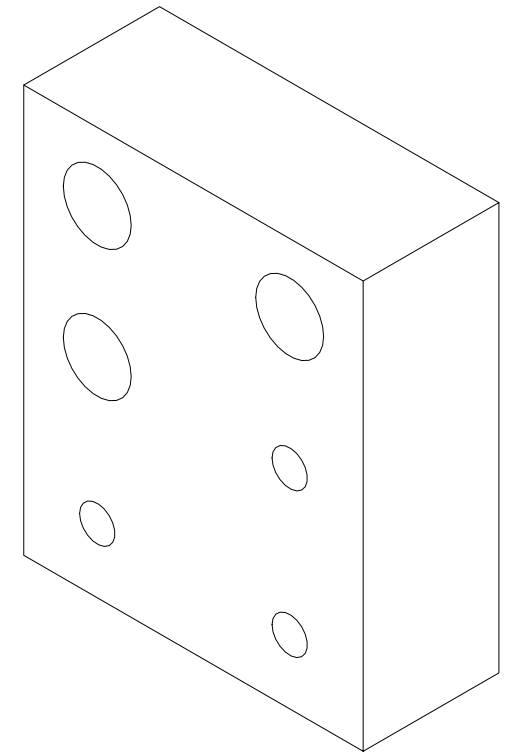
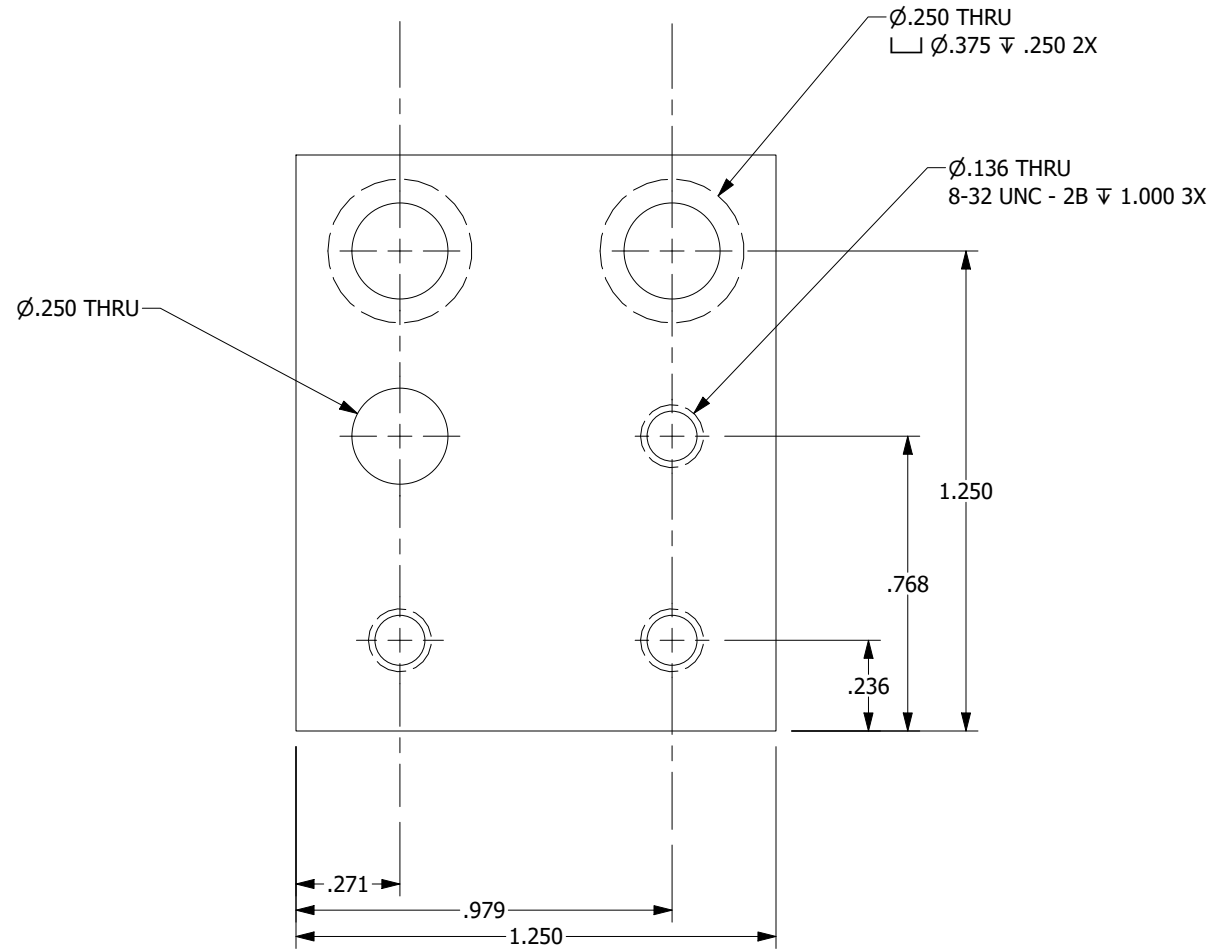
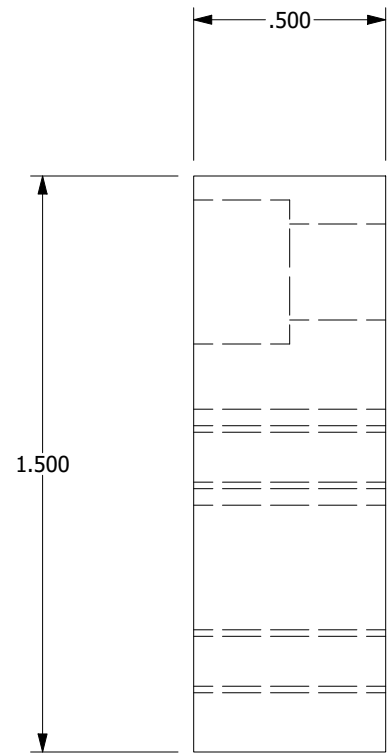
PROPRIETARY NOTE: THIS DOCUMENT CONTAINS INFORMATION WHICH IS CONFIDENTIAL AND PROPRIETARY TO MAINSTREAM ENGINEERING CORPORATION AND SHALL NOT BE USED, DUPLICATED OR DISCLOSED TO ANYONE, IN WHOLE OR IN PART, OR USED FOR ANY PURPOSE OTHER THAN WHICH IT WAS OBTAINED WITHOUT FIRST OBTAINING THE EXPRESSED WRITTEN CONSENT FROM MAINSTREAM ENGINEERING CORPORATION.

ITEM NO. 6
PART NO. 52009-1-03

SIZE	CAGE CODE	DRAWING NO.
B	0A0B7	10-52009 braze fixture
SCALE: NONE		REV SHEET 4 OF 5

DRAWING NO. 10-52009 braze fixture

MATERIAL: ALUMINUM ALLOY, 6061, FLAT BAR, 2" X .5"



PROPRIETARY NOTE: THIS DOCUMENT CONTAINS INFORMATION WHICH IS CONFIDENTIAL AND PROPRIETARY TO MAINSTREAM ENGINEERING CORPORATION AND SHALL NOT BE USED, DUPLICATED OR DISCLOSED TO ANYONE, IN WHOLE OR IN PART, OR USED FOR ANY PURPOSE OTHER THAN WHICH IT WAS OBTAINED WITHOUT FIRST OBTAINING THE EXPRESSED WRITTEN CONSENT FROM MAINSTREAM ENGINEERING CORPORATION.

ITEM NO. 8
PART NO. 52009-1-04

SIZE	CAGE CODE	DRAWING NO.
B	0A0B7	10-52009 braze fixture
SCALE: NONE	REV	SHEET 5 OF 5

DWG NO. 10-52009 braze fixture